

DOUGHKEEPSIE REGATTA ❖ 1937



OFFICIAL PUBLICATION OF THE
BOARD OF STEWARDS

PRICE THIRTY-FIVE CENTS

In these important harbors, it's

**GULF
MARINE WHITE
GASOLINE**



BOSTON—"Marine White Gasoline and Gulfpride Marine Oil grow more popular every day," says Frank Myers, of New England Marine Company's service station on Fort Point Channel, Boston Harbor. Make this fine station your Boston headquarters.



NEWPORT—"Gulf Marine White is the fastest selling gasoline we've ever seen," say Jestings and Therien, proprietors of the unique Mariners' Club, on Mariners' Dock. This complete marine station has shower and lounging rooms for officers and men, and a lounge deck, sea food bar, and car parking space for guests. In Newport Harbor, look for the Gulf sign and tie up at the Mariners' Club.

Photos at right show Gulf's Marine Service Barge, and the Narragansett Gulf, last word in service boats. In Newport Harbor, get Marine White gasoline and Gulfpride Marine Oil from them.



NEW LONDON—"Marine White and Gulfpride Marine Oil are prime favorites here," says Donald DuMont, of DuMont Marine Service. This complete station runs a marine taxi to Fisher's Island, N.Y. Transient skippers cordially invited.



CITY ISLAND—"Gulf Marine White is tremendously popular," says Ross Eaton, Captain of the Pelham Gulf, which, with a service barge, serves City Island, New Rochelle, Rye, Larchmont, Glen Cove, Manhasset Bay and adjacent waters.



GULF MARINE PRODUCTS

Ask for your free copy of Gulf's new radio guide for Weather Forecasts and Time Signals—at any Gulf dock.





THIS IS THE SIGN OF
Friendly Service

Everywhere, you'll see the Sign of the Flying Red Horse, known to millions of motorists as the Sign of Friendly Service. More motorists stop at this sign than at any other in America. You'll find it well worth while to stop there, too.

At the Sign of Friendly Service you'll find Mobilgas, America's largest selling gasoline and Mobiloil, the world's favorite motor oil. You'll find there, too, a cheerful willingness to render the many services your car needs for safety and economy.

STANDARD OIL OF NEW YORK
division of SOCONY-VACUUM OIL COMPANY, INC.

LINCOLN-ZEPHYR V-12



TRAVEL THE MODERN WAY!

RUNNING in luxury through blue waters, a modern ruler of the seas joins two continents in four days. . . . Cleaving white highways, a modern ship of the land, the LINCOLN-ZEPHYR, brings far places together with an ease not known before!

This car has four wheels, but there the similarity between the LINCOLN-ZEPHYR and others ends. The LINCOLN-ZEPHYR is different in design, different in the way it behaves on the

roads, different in its effect upon owners. People talk about this advanced type of transportation as they talk about a fine horse, a trip abroad, a new home. Something stimulating has come into their lives!

First in their conversation is the LINCOLN-ZEPHYR engine. It has twelve cylinders in V-style, develops 110 horsepower. It gives 14 to 18 miles to the gallon, an extraordinary record. But then this is an extraordinary car.

From the unique all-steel body and frame combined in a single piece, to the inclusion of so many fine-car features, the car stands out in *value* as it stands out along a country-club driveway.

Have you thought, up to now, that all motor cars are fundamentally alike? *Travel the modern way!* . . . Lincoln Motor Company, builders of Lincoln and Lincoln-Zephyr V-12 motor cars.



V SECOND ANNUAL RUNNING OF THE GEORGE VANDERBILT CUP

300 MILES . . . \$70,000

36 INTERNATIONAL
AUTO RACING STARS

Saturday, JULY 3RD

RACE STARTS AT 2 P. M.

DAYLIGHT SAVING TIME

- ★ 3 $\frac{1}{2}$ MILE ROAD-RACE TRACK, FULLY ENCLOSED
- ★ TRACK REBUILT FOR 100 MILE AN HOUR AVERAGE
- ★ SEVEN TWISTING TURNS . . . SIX LONG FAST STRAIGHTAWAYS
- ★ SCINTILLATING SPORTS SPECTACLE
- ★ SEE IT ALL FROM ANY SEAT

★ NEW LOW SCALE OF PRICES ★

INFELD \$1.50 RES'D SEATS \$3 PLUS BOXES \$5 PLUS Free Parking to
ADMISSION INC. TAX FROM TAX FROM TAX Grandstand and
Box Ticket Holders

ALL SEAT PRICES INCLUDE ADMISSION

View the Race From Your Own Car

Infield parking for just 1200 cars. Reserved from \$5, General \$2.
Prices for car only—admission of \$1.50 per person additional.

RESERVATIONS: ROOSEVELT RACEWAY
BOX OFFICE, HIPPODROME, 6th AVE. AT 43rd ST., NEW YORK, N. Y.

Tickets also on sale
at convenient locations everywhere

PHONE, WIRE or WRITE for Complete Information

**ROOSEVELT
RACEWAY**

WESTBURY . . . LONG ISLAND

ANNUAL REGATTA

of the

Intercollegiate Rowing Association

Incorporated 1898

POUGHKEEPSIE—JUNE 22, 1937

The members of the Association are Columbia, Cornell, Pennsylvania, Syracuse and the United States Naval Academy. California, Washington, and Wisconsin are competing on invitation.

OFFICIALS

The Board of Stewards

MAXWELL STEVENSON, *Columbia*

CHAIRMAN

WILLIAM H. FORBES, *Cornell*

C. LOUIS BORIE, III, *Pennsylvania*

FREDERICK H. PLUMB, *Syracuse*

COMMANDER A. C. McFALL, *Navy*

REYNOLDS BENSON, *Columbia*, Executive Secretary

Referee

JULIAN W. CURTISS, *Yale*

Chief Timer

ELIOT FARLEY, *Harvard*

Chief Judge at Finish

COLLES J. COE, *Yale*

PUBLISHED BY THE BOARD OF STEWARDS

Copyright, 1937, by the Intercollegiate Rowing Association, Inc.

An
AIR-COOLED
 "Summer Hotel"
 on
 Fifth Avenue

AFTER THE REGATTA . . . visit the air-cooled Viennese Roof. New "Dance of the Tanagras" in the Winterhalter Revue. Jacques Fray and his orchestra.

IF you must be in New York during the Summer—live comfortably! Reserve an air-cooled room or suite at the St. Regis. At the touch of your finger you can regulate your own room temperature at will . . . and be utterly independent of outside weather. Either by the month or by the day, the rates are really amazingly low. Rooms with natural ventilation are also available for those who prefer them.

James O. Stack, General Manager

THE **ST. REGIS**

FIFTH AVENUE AT 55TH STREET, NEW YORK



to **CALIFORNIA**
 (or from)
 and **Mexico**

via Havana, Panama Canal and Acapulco

s. s. CALIFORNIA
 s. s. PENNSYLVANIA
 s. s. VIRGINIA

The famous "Big Three" . . .

Ask for details about special MEXICAN
 "Circle Tours"

Between New York and California, 1st Class rates on the famous "Big 3" begin at \$225 (\$250 at some seasons), Tourist Cabin from \$125. New York-Mexico rates from \$195, 1st Class (from \$220 at some seasons), Tourist Cabin from \$105. Also "Circle Tours" to California and Mexico. You travel across and around America—one way by sea, one way by rail or air—at special hometown to hometown combination rates. And 9-17 Day All-Expense Vacation Cruise-Tours to Havana, Panama, the Caribbean and South America.

See your TRAVEL AGENT
 or write to 1 B'way, New York, N. Y.

PANAMA PACIFIC LINE

THE BOARD OF STEWARDS



© Frank Moore

WILLIAM H. FORBES
Cornell



© Phillips

C. LOUIS BORIE, III
Pennsylvania



MAXWELL STEVENSON
Columbia
CHAIRMAN



© Draucker

FREDERICK H. PLUMB
Syracuse



© Harris & Ewing

COMMANDER A. C. MCFALL
U. S. Naval Academy



Always
worth stopping for



BEECHIES
Gum in a crisp candy coating . . . doubly delightful that way! Peppermint, Spearmint, Pepsin!

Most popular flavor of gum in America is Beech-Nut Peppermint. Try our Spearmint, too, if you enjoy a distinctive flavor!

ORALGENE
The new firmer texture gum that gives your mouth much needed exercise. "Chew with a purpose!"

BEECH-NUT GUM

See the America's Cup Races
From the deck of your own
Wheeler Playmate



Corwith Cramer's Sea Foam VI, a Wheeler 46' Double Cabin enclosed bridge yacht, just delivered to him for witnessing the America's Cup Races.

The Cup Races will be one of the many happy adventures this summer in your Wheeler Playmate. There is a Wheeler Playmate for cruising, fishing, commuting or play. A design for every purpose. Many popular models are available for

Wheeler Playmate 39' Sunlight Lounging Sedan. America's most popular cruiser.



IMMEDIATE DELIVERY

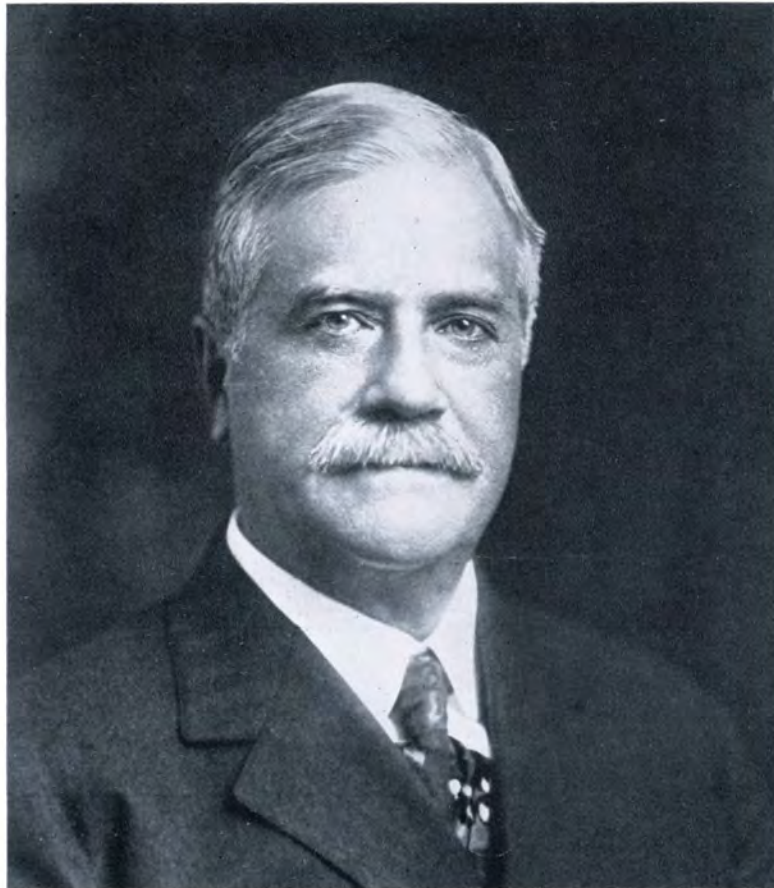
Commuters - Sedans - Yachts - Cruisers
26ft. - 65ft.

Complete 52-page catalog of all models on request

WHEELER SHIPYARD, INC.

Foot of
Cropsey Ave.

BROOKLYN, N. Y.



JULIAN W. CURTISS
REFEREE

THE REFEREE'S YACHT THIS YEAR IS
ROBERT F. HERRICK'S *GYPSY*



RACE TIME IS GAR WOOD TIME!



DRIVE A GAR WOOD AND YOU DRIVE A WINNER

Gar Wood boats are built by a champion to perform like a champion! Built to designs and specifications personally approved by Commodore Gar Wood, holder of the world's speed record on water. Yet, with all their sleekness and fleetness, they are spacious and comfortable . . . broad of beam, sweeping of flare . . . dry, soft-riding, easily handled and notably seaworthy. Drive a Gar Wood and you drive a winner . . . in performance . . . in appearance. Every day adds new emphasis to that already famous slogan, "Gar Wood Builds Better Boats." The new Wisconsin coaching boat is a Gar Wood. See . . . compare . . . before you buy. Choose from the largest fleet on the market. See your Gar Wood merchant, or write for beautifully illustrated catalog.



Dealers! The Gar Wood sales franchise is the most coveted franchise in the entire boating industry. See if your territory is open. Join the fastest growing boat merchant organization in the world. Write, wire or telephone for details.

GAR WOOD, INC.

426 River Road Marysville, Michigan
Cable Address: GARWOOD



OIL CONSERVATION • 1937 •

Nothing can prevent dirt and grit and hard carbon from getting into an engine, but, an efficient oil filter can and does keep them from doing any damage. It catches and holds these harsh, grinding substances . . . cleans and purifies the oil as it circulates, insuring an effective lubricant, rather than a dirty, tarry, sludge-filled abrasive.

The makers of Purolator designed and perfected the first practical filter for use on an automobile. They have extended their activities to every type of forced feed filtration, and their leadership is acknowledged and accepted throughout the engineering world. They invite your inquiries, either for standard designs, or for any filter problems that you have in mind. Motor Improvements, Inc., Newark, New Jersey, makers of

PUROLATOR
The Oil Filter

THE COACHES



GLENDON, OF COLUMBIA

Hugh Glendon is the son of famous old Dick Glendon, Sr., of Navy rowing. His coaching career started in 1928, when he came to Columbia as coach of the lightweight crew. His 1929 lightweight crew went to England, where it won the Marlowe Cup, and in 1932 he turned out another championship eight, which won the Henley Regatta. Upon the death of his brother Richard, Hugh was appointed head coach, and his father was named associate coach. Alastair MacBain, stroke of the 1929 Columbia Poughkeepsie Championship crew, is an assistant coach.



SANFORD, OF CORNELL

Harrison Sanford, 6 feet 5 inches tall and former Washington oarsman, is completing his first season of coaching at Cornell. One of the outstanding pupils of Rusty Callow, now coach at Pennsylvania, he was a member of the same winning crews that held Al Ulbrickson and Tom Bolles. He has been in business in Seattle since his graduation in 1926. Norman Sonju, who came to Cornell this year as Sanford's assistant, is another of Callow's pupils and a 1927 Washington graduate. From 1928 until his acceptance of the Cornell post, he was in mining at Nome, Alaska.



TEN EYCK, OF SYRACUSE

James A. Ten Eyck, head crew coach at Syracuse for 34 years, is the dean of all college coaches and sole surviving member of the old school of professional oarsmen. A rigid disciplinarian, Ten Eyck is nevertheless the idol of the men who have worked under him. He is 85 but remains youthful in spirit and action. Ten Eyck crews have won 5 'varsity, 5 junior 'varsity and 8 freshman championships at Poughkeepsie, in addition to numerous victories in other meets. Edward H. Ten Eyck, Jim's oldest son, joined his father this year as an assistant, after coaching at Rutgers for 3 years.

WALSH,
OF NAVY

Charles S. Walsh is serving his sixth year as head coach of rowing at the Naval Academy. A former Navy oarsman and a graduate of the Academy in 1923, he returned to Annapolis as assistant crew coach in 1924. In 1926 he was named coach of the freshman crew, and was appointed head crew coach in 1932.



EBRIGHT, OF
CALIFORNIA

Carroll M. "Ky" Ebright, California coach since 1924, has an outstanding record. In 1928 and 1932, he produced the best crew in the world—Olympic titleholders. From 1932 through 1935, his crews have dominated the Poughkeepsie regatta, although each year they had already lost to Washington, on the Coast. Ebright's boys also establish scholarship honors. None of the 55 'varsity oarsmen last year failed in a single subject, but maintained a "B" average for the squad.

HUNN, OF WISCONSIN

Ralph E. Hunn is, at 26 years, one of the youngest rowing coaches in any major American university. A Badger coxswain in '31 and '32, Hunn then served as freshman crew coach at Wisconsin under George W. Murphy. When Murphy resigned in 1933, Hunn succeeded him as 'varsity coach. Under Hunn, rowing interest has been greatly increased in the student body. Wisconsin's intramural races this year have drawn an entry of 25 fraternity and dormitory crews.



ULBRICKSON, OF WASHINGTON

Now in his tenth season as head crew coach at Washington, Alvin Ulbrickson stroked the Husky 'varsity to win at Poughkeepsie in '24 and again in '26; then last June, he watched all three of his Husky crews sweep the Hudson. Following this victory, he coached his 'varsity on to win the world championship in the Olympics at Berlin. Coach "Al" hit his stride in 1930 with his first Pacific Coast championship; his crews have held the Coast title for seven out of the last eight seasons.



RICHARDSON

the Cruiser for You!



LITTLE GIANT
(25' 10½" long 8' 6" beam)

The world's most popular, complete, low-priced, quality-built cruiser built with seven arrangements and priced from \$1965.



JUNIOR
(30' long 9' 4" beam)

Four arrangements to meet the most exacting yachting requirements. Priced as low as \$3100.



CRUISABOUT
(32' long 10' 1" beam)

The deluxe cruiser of the Richardson fleet. Six arrangements having every comfort and convenience. Priced from \$4158.

Richardson literature "Z-37" gladly mailed without cost or obligation to you.

Richardson Little Giants, Juniors and Cruisabouts are on display at BRUNS-KIMBALL & Co., 5th Ave. & 15th St., New York City and WALTER H. MORETON CORP., 1043 Commonwealth Ave., Boston, Mass.

RICHARDSON BOAT CO. Inc.

561 SWEENEY STREET NORTH TONAWANDA, N. Y.

RICHARDSON

LITTLE GIANTS • JUNIORS • CRUISABOUTS



American Woolen Company

INCORPORATED

* THE GREATEST NAME IN WOOLENS

*REG. U. S. PAT. OFF.

men's and women's wear fabrics

bed, camp and utility blankets

motor car upholstery fabrics

uniform fabrics

knitting yarns

225 FOURTH AVENUE, NEW YORK CITY

CHICAGO - PHILADELPHIA - BALTIMORE - LOS ANGELES

HOW TO IDENTIFY THE CREWS

The competing crews may be identified by the color of the coxswain's jersey and of the flag on the bow of the shell, as follows:

Columbia—light blue
Cornell—light red and white
Syracuse—orange
Navy—dark blue

California—gold
Washington—white
Wisconsin—red

ORDER OF FINISH

Announced by Salvo of Bombs

In each race, the *first* crew to pass under the Railroad Bridge will be announced by a salvo of bombs, the number of bombs fired corresponding to the number of the *lane* of the leading crew. The *first* crew to cross the finish line in each race will be announced in the same manner.

Indicated by Flags

The order in which the crews *finish* will also be indicated by flags suspended from both the Railroad and the Vehicular Bridge, the regular college colors of the winning crew being the top flag. Flags will also be hoisted on the mast of the referee's boat, the colors of the winning crew being the uppermost flag—the rest hoisted in the order of finish. The flags will be of the following colors:

Columbia—light blue and white
Cornell—red and white
Syracuse—orange with dark "S"
Navy—blue and gold with white "N"

California—dark blue and gold with white "C"
Washington—purple and gold with white "W"
Wisconsin—red with white "W"

By Bulletin Board

A Bulletin Board has been erected on the Judges' Boat, located at the Finish Line. The order in which the *first three* crews finish in all races will be indicated on this Board, the lane number of the crew being used in place of its college name. This use of the lane number was found necessary owing to the distance of the Judges' Boat from the shore.

The lane number of the winning crew will be at the top, and below it will be the lane numbers of the other two crews, in the order of finish.

The time made by each crew will appear opposite the number of its lane. For example, if the crew in lane No. 10 won, and its time was 20 minutes and 30 1-5 seconds, the top line on the board would read: "10-20-30-1."

LANES OF THE CREWS

The lanes of the several crews (numbered from the west shore of the river) are as follows:

Freshmen
No. 1.....Syracuse
No. 2.....Columbia
No. 3.....Washington
No. 4.....Cornell
No. 5.....California
No. 6.....Navy

Junior Varsity
No. 3.....Washington
No. 4.....Cornell
No. 5.....Navy

Varsity
No. 1.....Navy
No. 2.....Syracuse
No. 3.....Washington
No. 4.....Wisconsin
No. 5.....Columbia
No. 6.....California
No. 7.....Cornell

NEW



Now Zeiss Binoculars, in addition to their renowned optical perfection, offer another important advantage. New featherweight models are 32 to 40% lighter than former binoculars of same size. Easier to carry; greater ease and steadiness in holding to eyes—a real advantage in extended observation.

See them at leading dealers. Write for Literature.

CARL ZEISS, INC., Dept. T-19-6, 485 Fifth Ave.,
New York
728 So. Hill St., Los Angeles



ZEISS

Standard Service
for the
Valley

Central Hudson
Gas & Electric
Corporation

WITHOUT QUESTION
THE BEST PLACE TO
MEET YOUR FRIENDS

...AIR-CONDITIONED

COOL
COMFORT
AND
DELICIOUS
FOOD
in the

TUDOR ROOM

THE GRILL

COMMODORE

New York's Ideal
Hot-weather spots!

THE BAR & CAFE

RIGHT AT GRAND CENTRAL

THE BEST LOCATED HOTEL IN
NEW YORK

FRANK J. CROHAN, *President*

NELSON
HOUSE

POUGHKEEPSIE, N. Y.

Poughkeepsie's Leading Hotel

New Fireproof Addition
European Plan

175 Rooms

125 Baths

Popular Price Coffee and Lunch Room

A.A.A. Information Bureau

Fireproof Ramp Garage on the Premises

E. P. COUGHLAN, *Prop.*

PROGRAM

Freshmen Eight-Oared Shells

2:00 p. m., E.S.T.

TWO MILES

TROPHY—The Stewards' Cup, presented in 1900, by Francis S. Bangs, Columbia, to be held by the winner for one year. Present holder, Washington.

RECORD—9 m., 11 $\frac{1}{2}$ s., by Cornell, July 2, 1909.

COURSE POSITIONS

Course No. 1—Syracuse	Course No. 3—Washington	Course No. 5—California
Course No. 2—Columbia	Course No. 4—Cornell	Course No. 6—Navy

ORDER OF FINISH—

1 <i>Washington</i> Time, . . . 9 . . . m. 10 . . . s.	4 <i>Cornell</i> Time, . . . 9 . . . m. 26 . . . s.
2 <i>California</i> Time, . . . 9 . . . m. 23 . . . s.	5 <i>Navy</i> Time, . . . 9 . . . m. 27 . . . s.
3 <i>Syracuse</i> Time, . . . 9 . . . m. 24 . . . s.	6 <i>Columbia</i> Time, . . . 9 . . . m. 27 . . . s.

Water Conditions Wind

Junior 'Varsity Eight-Oared Shells

3:00 p. m., E.S.T.

THREE MILES

TROPHY—The Kennedy Challenge Trophy, presented in 1899, by Davidson Kennedy, Pennsylvania, to be held by the winner for one year. Present holder, Washington.

RECORD—14 m., 18 $\frac{1}{2}$ s., by U. S. Naval Academy, June 19, 1928. 9 m., 45 $\frac{1}{2}$ s., by Cornell, June 26, 1922, for two-mile course.

COURSE POSITIONS

Course No. 3—Washington	Course No. 4—Cornell	Course No. 5—Navy
-------------------------	----------------------	-------------------

ORDER OF FINISH—

3 <i>Washington</i> Time, . . . 13 . . . m. 44 . . . s.	5 <i>Cornell</i> Time, . . . 14 . . . m. 37 . . . s.
4 <i>Navy</i> Time, . . . 13 . . . m. 55 . . . s.	

Water Conditions Wind

University Eight-Oared Shells

4:00 p. m., E.S.T.

FOUR MILES

TROPHY—The 'Varsity Challenge Cup, presented in 1898, by Dr. Louis L. Seaman, Cornell, to be held by the winner for one year. Present holder, Washington.

RECORD—18 m., 35 $\frac{1}{2}$ s., by California, June 19, 1928. 13 m., 33 $\frac{1}{2}$ s., by U. S. Naval Academy, June 26, 1922, for three-mile course.

COURSE POSITIONS

Course No. 1—Navy	Course No. 3—Washington	Course No. 6—California
Course No. 2—Syracuse	Course No. 4—Wisconsin	Course No. 7—Cornell
	Course No. 5—Columbia	

ORDER OF FINISH—

1 <i>Washington</i> Time, . . . 18 . . . m. 33 . . . s.	5 <i>California</i> Time, . . . 19 . . . m. 23 . . . s.
2 <i>Navy</i> Time, . . . 18 . . . m. 47 . . . s.	6 <i>Columbia</i> Time, . . . 19 . . . m. 20 . . . s.
3 <i>Cornell</i> Time, . . . 18 . . . m. 48 . . . s.	7 <i>Wisconsin</i> Time, . . . 19 . . . m. 24 . . . s.
4 <i>Syracuse</i> Time, . . . 18 . . . m. 57 . . . s.	

Water Conditions Wind

NOTES:—All course positions are numbered from the west shore of the River.—The Freshmen and Junior 'Varsity Races start respectively one and two miles above the Railroad Bridge. The 'Varsity Race starts three miles above the Bridge, a mile above the Columbia Boat House. The finish line for all races is one mile below the Bridge.

DATA ON HOW TO IDENTIFY THE CREWS, ORDER OF FINISH, ETC., WILL BE FOUND ON THE PRECEDING PAGE.



COLUMBIA ' VARSITY

Position	Name	Age	Height	Weight		
Bow	Baas, Philip	20	6'	175		
No. 2	Murphy, William	20	6'	175		
No. 3	Bertull, Henry	20	6' 3"	178		
No. 4	Kurz, William	19	6' 3 1/4"	173		
No. 5	Bernius, William	21	6' 2"	179		
No. 6	Cook, William	20	6' 3"	179		
No. 7	Rahilly, George	21	6'	171		
Str.	Kloth, Edward	19	6'	175		
Average				20	6' 1 3/8"	176 1/2
Cox.	Baldini, Charles	20	5' 6"	119		
Subs.	Gale, John	20	6' 3"	185		
	Roy, Robert	20	5' 11"	170		
	Martin, Robert	20	6' 1"	177		
	Zumbach, John	22	6'	167		
	McHaney, James	19	5' 5"	111		
	Hutton, Walter	20	6' 3"	185		
	Marzari, Richard	19	6' 2"	170		

© Steenson & Van Vlack



PHILIP B. R. BAAS
Columbia Captain



ROBERT H. MENGES
Cornell Captain

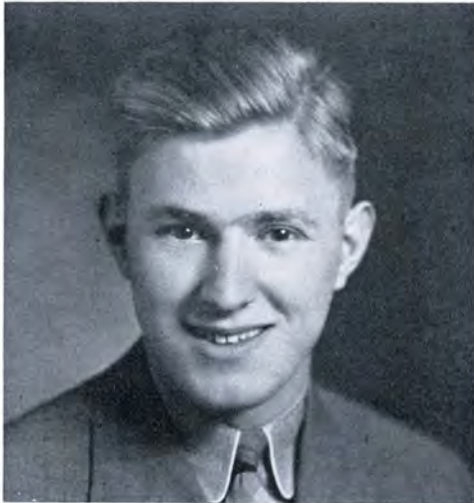
CORNELL ' VARSITY

Position	Name	Age	Height	Weight		
Bow	Dean, Benjamin E.	19	6' 3 3/4"	178		
No. 2	Menges, Robert H.	21	6' 4"	182		
No. 3	Hartman, Albert W.	22	6' 5"	175		
No. 4	Pfeiffer, Edmund F.	20	6' 2"	192		
No. 5	Furman, John R.	19	6' 4 1/2"	196		
No. 6	Rogers, John W.	22	6' 5 1/2"	194		
No. 7	Beuttell, Henry V.	20	6' 2"	190		
Str.	Dodge, James G.	21	6' 1"	182		
Average				20 1/2	6' 3 1/4"	186 1/4
Cox.	Holley, George M., Jr.	22	5' 11"	120		



SYRACUSE ' VARSITY

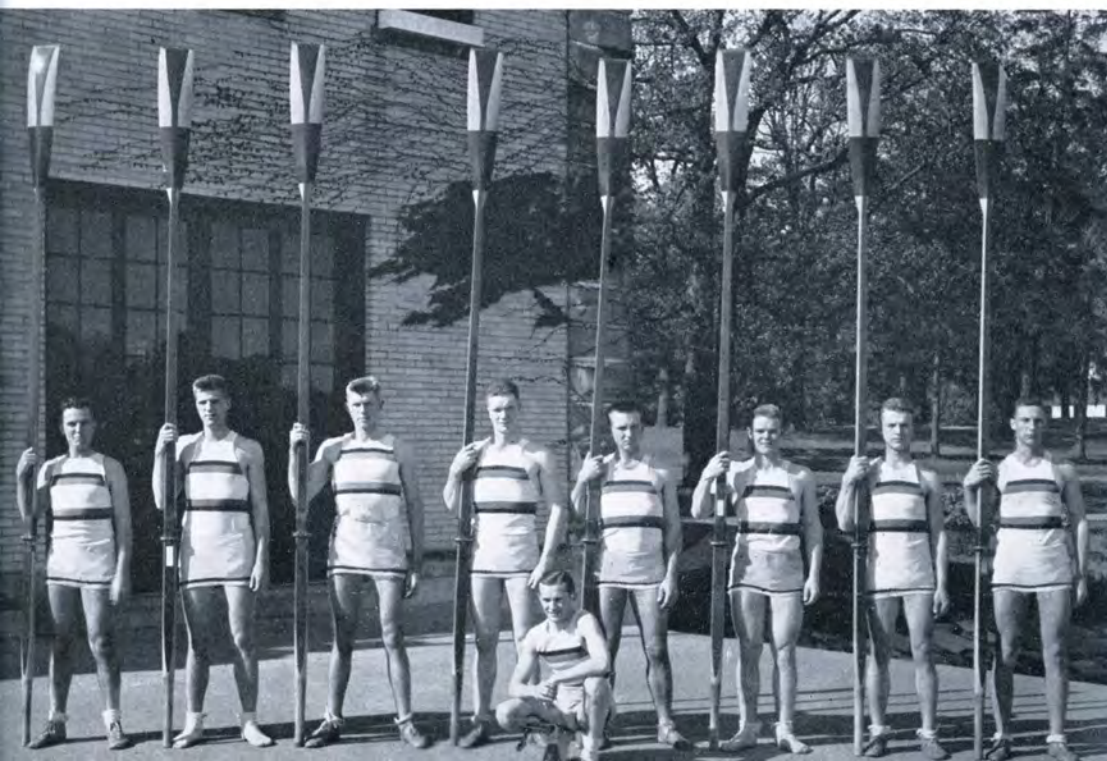
Position	Name	Age	Height	Weight
Bow	Kerr, Thomas	21	6'	170
No. 2	Horrocks, John	20	5' 11"	170
No. 3	McNeil, Gomer	19	6' 2"	177
No. 4	Stuhlman, Wilbur	19	6'	180
No. 5	Otis, Edward	23	6' 2"	182
No. 6	Foster, Leslie	20	6' 4"	180
No. 7	Belko, Jack	20	6' 2"	184
Str.	Bettinger, Sterling	21	6'	163
Average		20 $\frac{3}{8}$	6' 1 $\frac{1}{8}$ "	175 $\frac{3}{4}$
Cox.	Weston, Ralston	21	5' 5"	115
Subs.	Rice, Franklin	21	6'	196
	Davey, Norton	18	6' 1"	172
	Worden, Robert	22	5' 11"	180
	Kelsey, Charles	20	6' 1"	175
	Thompson, Robert	20	6'	170
	Richardson, Russell	19	5' 4"	120



© Lindsley-Barnard
STERLING BETTINGER
Syracuse Captain



A. B. YEATES, JR.
Navy Captain



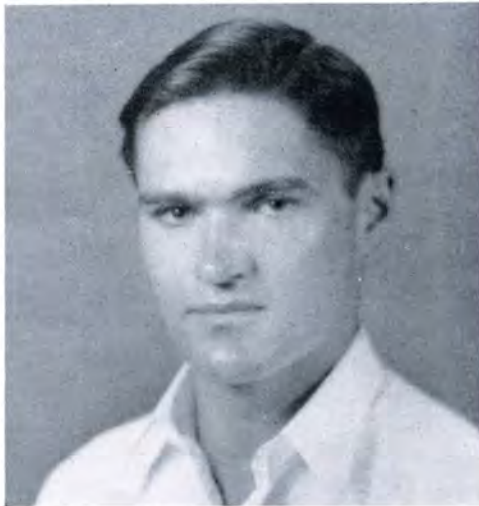
U. S. NAVAL ACADEMY ' VARSITY

Position	Name	Age	Height	Weight
Bow	Schultz, P. G., Jr.	20	6' 1"	160
No. 2	Erickson, J. L.	21	6'	160
No. 3	Bullard, G. C.	21	5' 11"	170
No. 4	Kittler, F. W.	20	6'	180
No. 5	Whiteside, G. A.	20	6' 4"	180
No. 6	Yeates, A. B., Jr.	22	6' 4"	180
No. 7	Spear, L. P.	19	6' 1"	180
Str.	Schumacher, V. E.	20	6'	170
Average		20 $\frac{3}{8}$	6' 1 $\frac{1}{8}$ "	170
Cox.	Rowe, H. A.	23	5' 7"	130
Subs.	Tausch, F. L.	21	6'	150
	Minter, C. S., Jr.	21	6' 2"	160



CALIFORNIA ' VARSITY

Position	Name	Age	Height	Weight
Bow	Frost, Steve	20	6' 1½"	163
No. 2	Sharrer, Gwynne	20	6'	171
No. 3	Schaeffer, Jim	19	6' 1"	180
No. 4	Bergh, Emil	19	6' ¾"	188
No. 5	deVarona, Dave	20	6' 2"	186
No. 6	Moore, Rollin	19	6' 2"	184
No. 7	Porterfield, Pete	20	6' ¾"	181
Str.	Arpin, Larry	19	6' 1¾"	173
Average		19½	6' 1¾"	178¼
Cox.	Kueny, Harry	20	5' 8½"	126
Subs.	Rocca, Curt	19	6' 3"	183
	Smith, Kirk	20	6' 3"	165



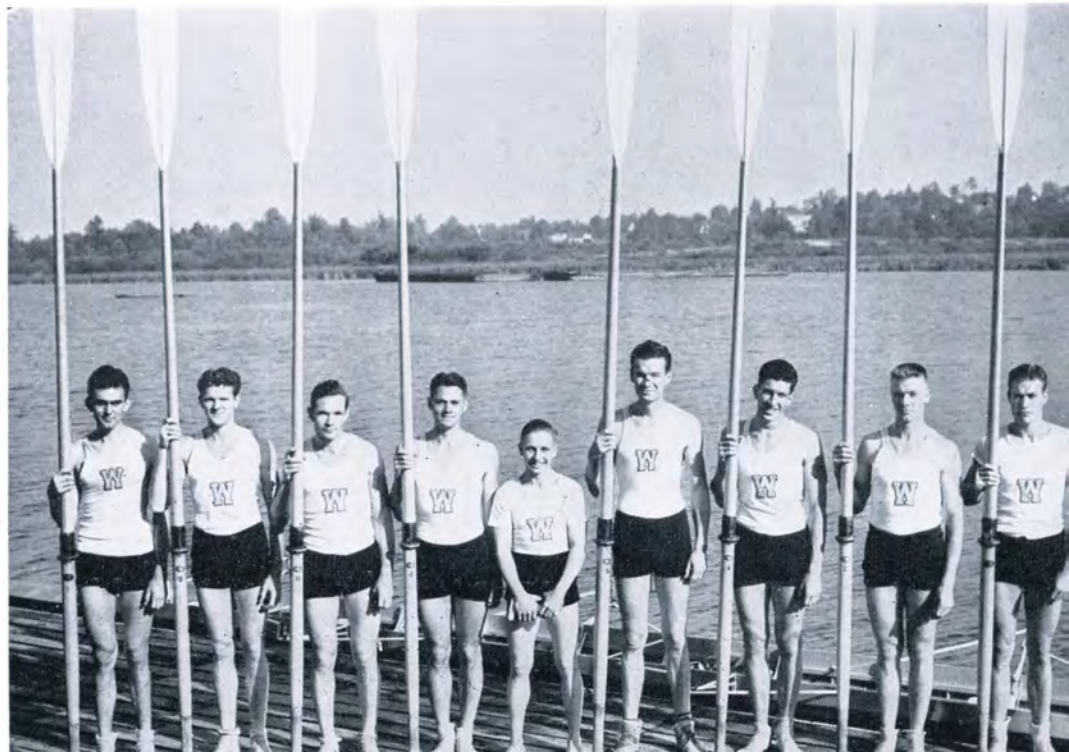
© Coleman, Oakland
LARRY ARPIN
California 'Varsity Stroke



JIM McMILLIN
Washington Captain

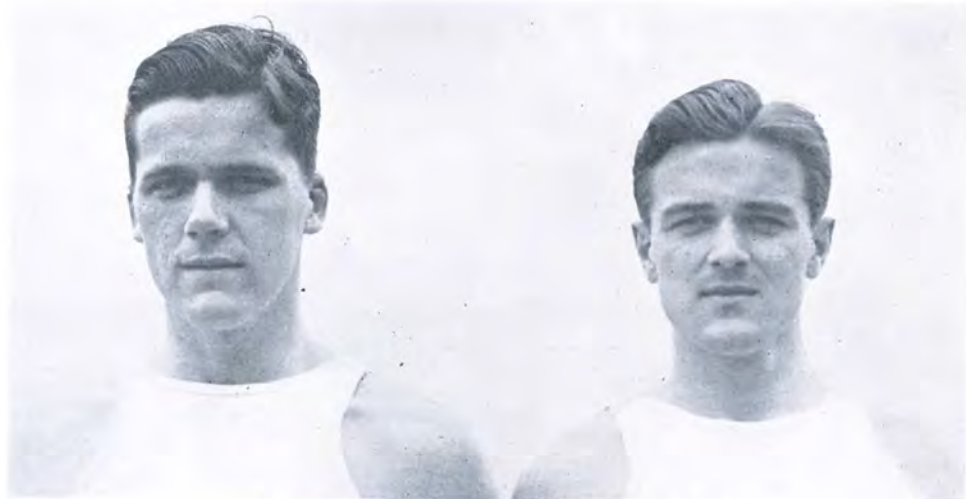
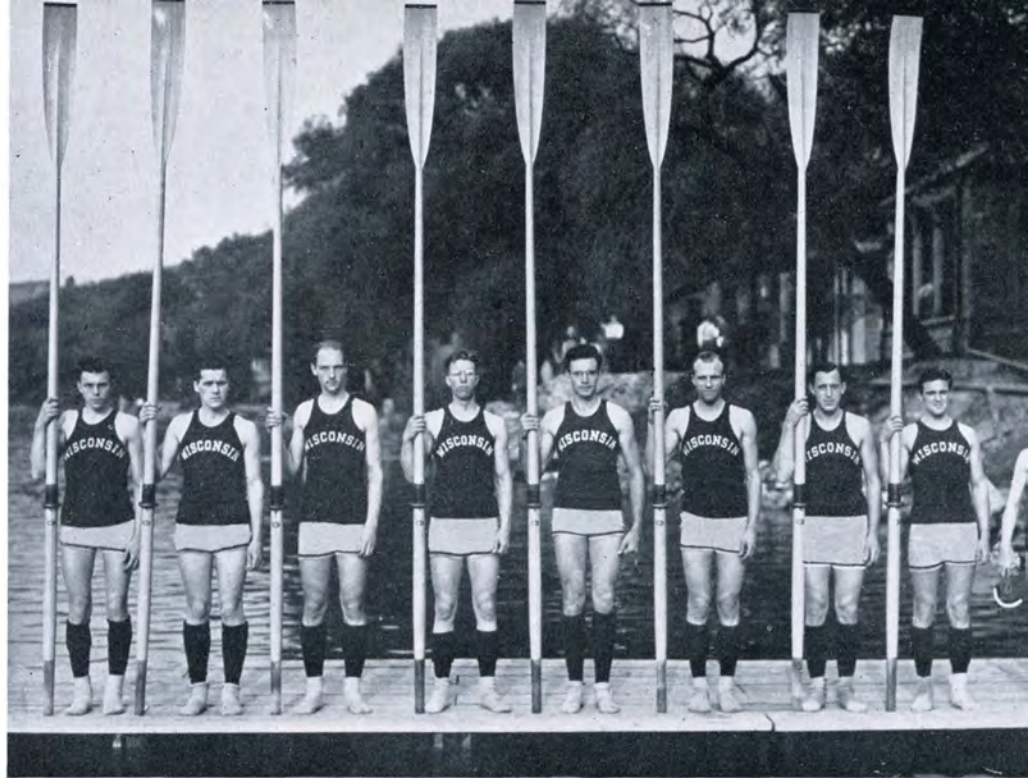
WASHINGTON ' VARSITY

Position	Name	Age	Height	Weight
Bow	Morris, Roger	21	6' 3"	165
No. 2	Day, Charles	22	6' 3"	170
No. 3	Adam, Gordon	22	6' 1½"	177
No. 4	White, John	21	6' 2"	178
No. 5	McMillin, Jim	23	6' 5"	185
No. 6	Hunt, George	21	6' 4"	187
No. 7	Rantz, Joe	23	6' 3"	175
Str.	Hume, Don	21	6' 2"	170
Average		21¾	6' 3"	175¾
Cox.	Rosenkranz, John	22	5' 5½"	115
Subs.	Wassard, Ted	19	6' 2"	170
	Carey, John	22	5' 11"	167



WISCONSIN ' VARSITY

Position	Name	Age	Height	Weight
Bow	Pacausky, Ray	22	6' 2"	163
No. 2	Heinze, Bob	22	6' 2"	183
No. 3	Bridge, Arthur	23	6' 4"	183
No. 4	Collins, Ed.	19	6' 3"	176
No. 5	Burroughs, Charles	23	6' 4½"	193½
No. 6	Ryan, Ed.	21	6' 2½"	183
No. 7	Ibisch, Franz	22	6' 1"	177
Str.	Huen, Don	21	6'	157
Average		21½	6' 2¾"	177
Cox.	Wiggins, Don	22	5' 6"	120
Subs.	Brooks, Joe	20	6' 3"	180
	Hoffman, Richard	20	6' 4"	176



ROBERT S. HEINZE and DONALD R. HUEN
Wisconsin Co-Captains

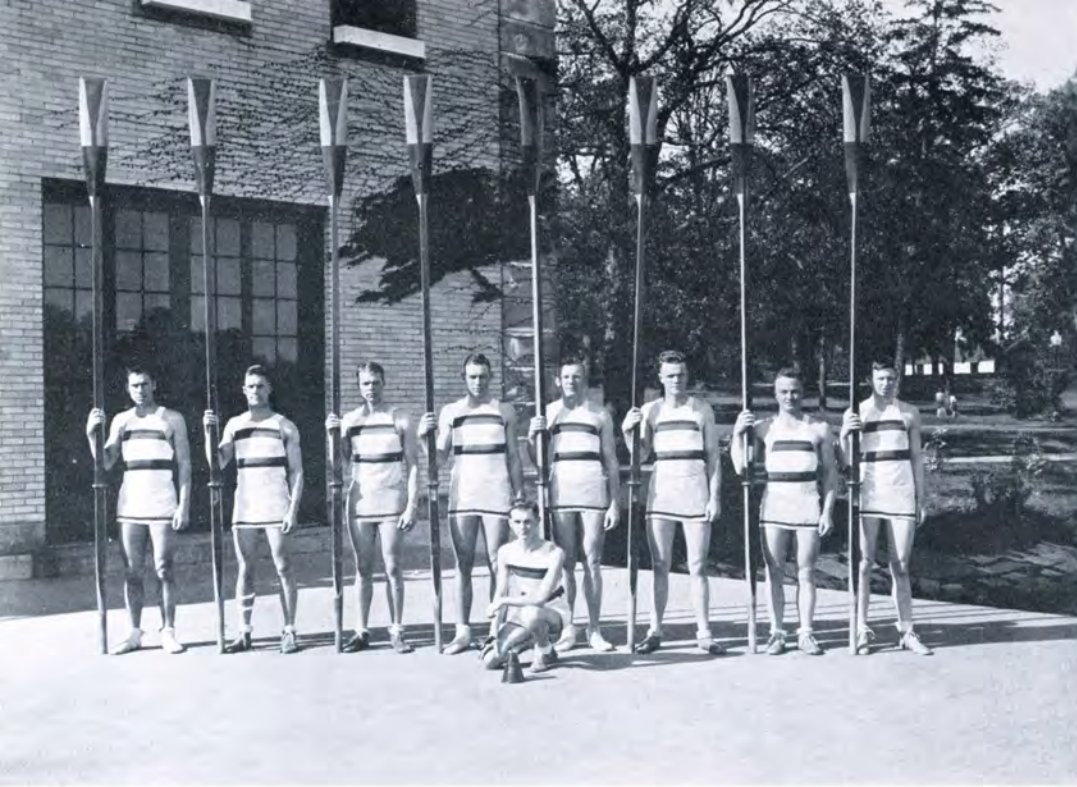


WILLIAM W. DAVENPORT
Columbia Manager



CORNELL JUNIOR ' VARSITY

Position	Name	Age	Height	Weight
Bow	Bennett, Noel S., Jr.	21	6' 4"	181
No. 2	Willerton, Arthur M.	20	6' 2"	171
No. 3	Moak, Arthur A.	19	6' 2"	171
No. 4	Foertsch, Walter H.	21	6' 4"	181
No. 5	Heckel, Edmund P., Jr.	19	6' 2½"	171
No. 6	Risley, Henry B.	22	6' 1"	171
No. 7	Schilling, Fred J., Jr.	19	6' 2½"	171
Str.	Chamberlain, Robert S.	19	6' 3"	171
Average		20	6' 2¾"	171
Cox.	Whitney, Larned S., Jr.	21	5' 5"	121
Subs.	Porter, Milton R.	20	6' 3"	171
	Anderson, Richard R.	20	5' 11½"	121



© Hayman

U. S. NAVAL ACADEMY JUNIOR VARSITY

Position	Name	Age	Height	Weight
Bow	Hooper, F. A.....	18	6' 2"	157
No. 2	Williams, G. B.....	20	5' 11"	179
No. 3	Almgren, N.	21	6' 3"	177
No. 4	Brown, F. W., Jr.....	21	6' 1"	181
No. 5	Suddath, T. H.....	20	6' 1"	176
No. 6	Swift, H. M. S.....	23	6'	172
No. 7	Brown, C. D.....	22	5' 11½"	158
Str.	Walker, T. J., 3d.....	20	6' 1"	175
Average		20½	6' ¾"	171
Cox.	Knapp, E. L.....	22	5' 7"	125



MORSE JOHNSON
Cornell Manager



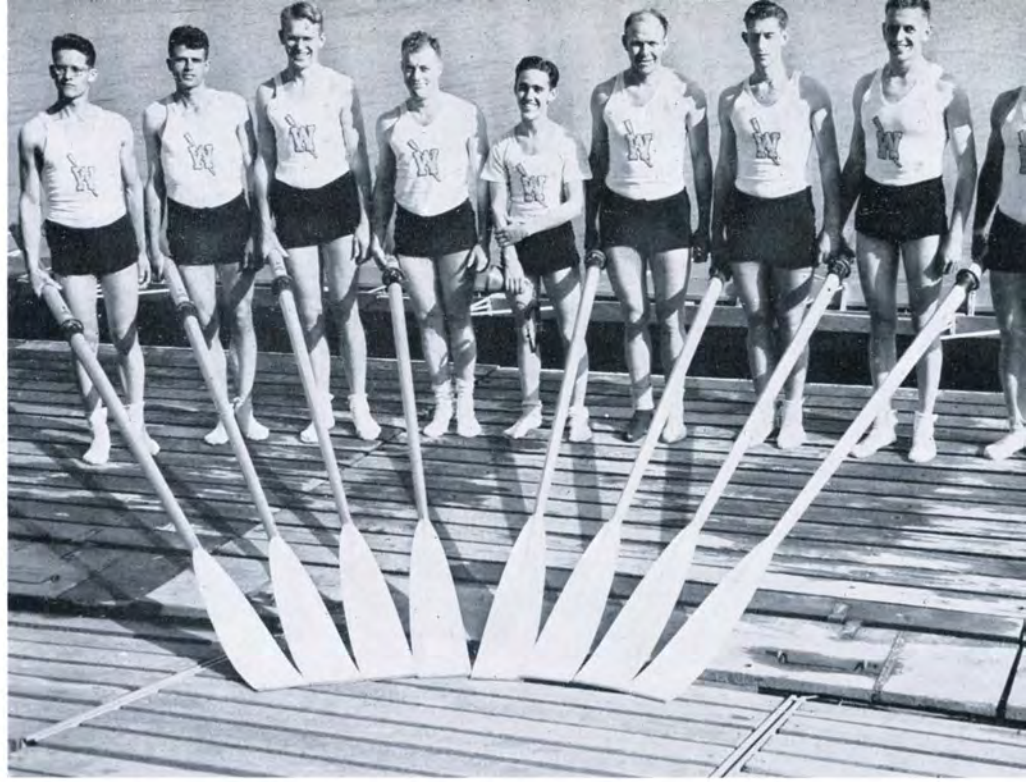
© Lindsley-Barnard
KENNETH BUHRMASTER
Syracuse Commodore



© Hayman
W. J. TATE, JR.
Navy Manager

WASHINGTON JUNIOR VARSITY

Position	Name	Age	Height	Weight
Bow	Turay, Norman	21	6' 2½"	171
No. 2	York, John	24	6' 1½"	163
No. 3	Lund, George	21	6' 4"	188
No. 4	Dingwall, Ewen	24	6' 2"	180
No. 5	Schoch, Delos	23	6' 2"	190
No. 6	Hawel, Leo	20	6' 2½"	182
No. 7	Murray, Robert	21	6' 3½"	175
Str.	Eriksen, Gosta	23	6'	175
Average		22½	6' 2¼"	178
Cox.	Schenck, Earl	19	5' 7"	115



© Coleman, Oakland

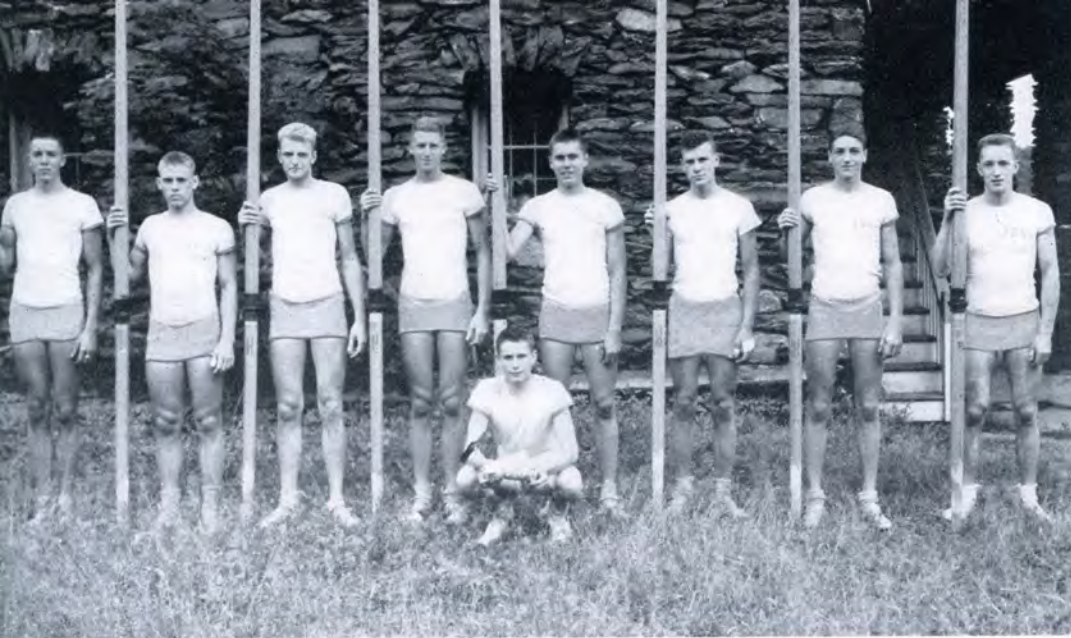
REX JONES
California Manager



CHARLES PADEL FORD
Washington Manager



ALBERT A. PAVLIC
Wisconsin Manager



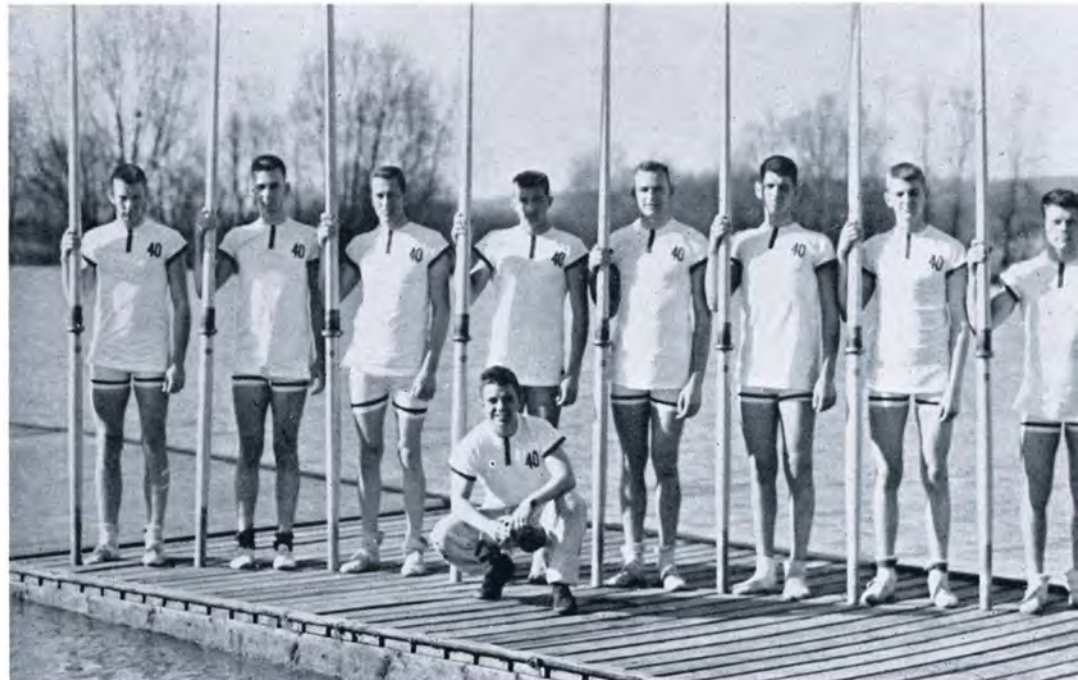
COLUMBIA FRESHMEN

Position	Name	Age	Height	Weight
Bow	Rhea, James	18	6'	175
No. 2	Webster, Charles	18	6' 2 $\frac{1}{2}$ "	165
No. 3	Jones, Holcomb	21	6' 1"	170
No. 4	Wheeler, Henry	17	6' 3"	185
No. 5	Froehlich, Charles	19	6' 4"	171
No. 6	Remmer, Henry	20	6' 4"	178
No. 7	Evers, William	17	6' 2"	167
Str.	Fremd, John	19	6' 2"	168
Average		18 $\frac{5}{8}$	6' 2 $\frac{3}{8}$ "	172 $\frac{3}{8}$
Cox.	Koloski, Eugene	18	5' 6"	114
Subs.	Farwell, Hermon	18	6' 1"	165
	Keutgen, William	18	5' 11"	170
	Norris, John	18	5' 9"	120

© Steenson & Van Vlack

CORNELL FRESHMEN

Position	Name	Age	Height	Weight
Bow	Allen, Stanley W., Jr.	19	6' 1"	173
No. 2	Gordon, Theodore D.	17	6' 3"	175
No. 3	Sylstra, Anthony	25	6' 2"	175
No. 4	Walsh, Van Wormer, Jr.	18	6' 5"	184
No. 5	Beh, Gordon	19	6' 4"	190
No. 6	Young, James A., Jr.	19	6' 4"	187
No. 7	Lester, Jonathan, Jr.	19	6' 4"	167
Str.	Lindo, Richard J.	18	5' 11"	168
Average		19 $\frac{1}{4}$	6' 2 $\frac{3}{4}$ "	177 $\frac{3}{8}$
Cox.	Sears, George A.	19	5' 3"	120
Subs.	Gilbert, Joseph B.	19	6' 2"	173
	Stark, Paul C., Jr.	19	5' 11"	173



SYRACUSE FRESHMEN

Position	Name	Age	Height	Weight
Bow	Vincent, John	19	6' 2"	182
No. 2	Whitehead, Bruce	19	6'	185
No. 3	De Young, Benjamin	23	6' 1"	180
No. 4	Barge, Henry	20	6'	175
No. 5	Wilcox, Arthur	18	6' 3"	170
No. 6	More, John	22	6' 2"	190
No. 7	Hadley, Howard	18	6' 2"	183
Str.	Bradley, Gerald	20	6' 1"	170
Average		19 $\frac{7}{8}$	6' 1 $\frac{3}{8}$ "	179 $\frac{3}{8}$
Cox.	Hart, Paul	18	5' 6"	121
Subs.	Thompson, Malcolm	19	6' 2"	185
	Tainter, Bernard	19	6'	172
	Wardwell, Charles	19	5' 11 $\frac{1}{2}$ "	181
	Robinson, Herbert	18	6' 1"	165
	Ryerson, William	19	5' 6"	118



U. S. NAVAL ACADEMY FRESHMEN

Position	Name	Age	Height	Weight
Bow	MacInnes, D. F.	17	6'	152
No. 2	Orser, L. S.	18	6' 1"	166
No. 3	Benjes, A. C., Jr.	18	5' 11"	157
No. 4	Folsom, C. C.	19	6' ½"	172
No. 5	House, W. H.	19	6' 2"	198
No. 6	Phillips, D. P.	18	6' 1½"	183
No. 7	Peters, I. G.	19	6'	168
Str.	Lee, H. V.	19	6' 1"	175
Average		18¾	6' ⅝"	171¾
Cox.	Hancock, V. I., Jr.	19	5' 6"	125
Subs.	Ramsay, L. B.	18	6'	174
	Croft, W. C.	18	6'	160



© M. L. Cohen

CALIFORNIA FRESHMEN

Position	Name	Age	Height	Weight
Bow	Gilchrist, Al	20	6' ½"	171
No. 2	Hansen, John	18	6' 1"	161
No. 3	Talcott, Ray	17	6' ½"	161
No. 4	Emerson, Linton	19	6' 3"	171
No. 5	Schulte, Bernard	18	6' 4"	171
No. 6	Freeborn, Stan	19	6' 4"	171
No. 7	Gibson, Chet	18	6' 1"	161
Str.	Webster, Joe	20	6' 2½"	171
Average		18⅝	6' 2"	171
Cox.	Reed, Jerry	19	5' 8"	121
Subs.	Schwartz, Burt	18	6' 1"	161
	DuBois, Harry	18	6' 1"	161

WASHINGTON FRESHMEN

Position	Name	Age	Height	Weight
Bow	Dunlap, William	19	6' 2"	172
No. 2	Milbank, Norman	21	6' 1"	171
No. 3	Grunbock, Robert	19	6' 4"	176
No. 4	Williams, Ralph	19	6' 2"	175
No. 5	Hansen, George	21	6' 4"	175
No. 6	Johnson, Robert	18	6' 3"	179
No. 7	Thompson, Don	18	6' 1"	179
Str.	Michalson, Victor	20	6' 1½"	172
Average		19¾	6' 2¼"	174¾
Cox.	Hokenstad, Ted	19	5' 5"	117
Subs.	Dyer, Frederick	19	6' 3"	185
	Walton, Arthur	19	6' 4"	173



INTERCOLLEGIATE REGATTA COMMITTEE OF POUGHKEEPSIE

PETER H. TROY, *Chairman*

Hon. Geo. V. L. Spratt
Ernest R. Acker
Vincent Astor
Wentworth C. Bacon
Frederic H. Bontecou

Clas. T. Brose
George Briggs Buchanan
Geo. D. Campbell
Alexander Caven
Richard E. Coon, Jr.

Chas. O. Conger
Emmet P. Coughlan
Gen. John Ross Delafield
Lyman Delano
Tracy Dows

M. Glenn Folger
Dr. Ralph P. Folsom
James J. Fox
Frank L. Gardner
Daniel J. Gleason



PETER H. TROY
Chairman of the Regatta Committee

John B. Grubb
Fred J. Holman
Titus S. Hose
Lydig Hoyt
Robert P. Huntington
Alfred B. Maclay
Wm. W. Maloney, III
H. N. MacCracken
Theodore H. Miller
Ogden L. Mills
Frederick N. Morgan
Henry Morgenthau, Jr.
Joseph Morschauer
George Overcocker
Herbert C. Pell
Edward E. Perkins
Geo. W. Perkins
Walter W. Price
Paul A. Rieser
N. Otis Rockwood
Hon. Franklin D. Roosevelt
Geo. E. Ruppert
George G. Salberg
H. A. Schatz
Wm. Schickle
William W. Smith, 2nd
Wm. DeGarmo Smith
Oakleigh Thorne
Morris S. Tremaine
Frederick W. Vanderbilt
Perry Walsh
Christian A. Zabriskie



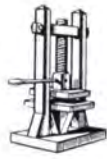
© White
REYNOLDS BENSON, *Columbia*
Executive Secretary of the Board of Stewards



Increased
HIDING POWER and LIFE
in NAVY paints

TITANOX PIGMENTS

TITANIUM PIGMENT CORPORATION
111 Broadway, New York, N. Y.
Carondelet Station, St. Louis, Mo.



**Some Printers
MAY Quote
Lower Prices**



Sometimes our estimates on printing jobs are not the lowest. Though we have a large, efficient plant and produce quality printing on a competitive basis, there are always reasons why somebody else may quote lower prices once in a while.

What we offer are creative service and the finest quality of printing and prices accurately based on our low-cost of production. This is the kind of printing you can trust.

Large and small companies in the Center are our regular customers.

If you would like to compare our estimates, our kind of work with any others, telephone MEdallion 3-0300 for a representative.



**EILERT PRINTING
Company, Inc.**
318 WEST 39 STREET, NEW YORK

**PROVIDES SAFETY AT SEA
. . . Avert Complete Disaster**



Equip your boats with SEA-LITE JACKETS . . . the Life Jacket with an automatic electric light, which operates immediately upon contact with the water . . . think of what that means in the dark of night during any marine disaster — major or minor.

Rescuers can then see the survivors upon the water . . . the Sea-Lite burns brilliantly for seventy-five hours . . . may be stored indefinitely—always ready for use.

Buy the Sea-Lite Life Jackets from your own distributor or write us

direct. The cost of the jacket complete with built-in unit is ONLY \$7.50.

**Every Jacket carries the stamp of U. S.
Government Approval**

SEA LITE MANUFACTURING CORP.
791 Tremont Street, Boston, Mass.

**THE
HOTEL NASSAU**

**ON THE NEW
TWO MILLION DOLLAR**

**BOARDWALK
IN LONG BEACH, L. I.**



**RATES: \$200 per season
and up, double
DAY RATES: \$5.00 and
up, double**



A. T. SHIRTENLIEB
MANAGING DIRECTOR

RECORD OF PREVIOUS RACES

FRESHMAN EIGHTS—TWO MILES

DATE	TIME	1ST	2ND	3RD	4TH	5TH	6TH	7TH	8TH
June 24, 1896	10 m 18 s	Cornell	Harvard	Pennsylvania	Columbia				
June 23, 1897	9 m 19 1/2 s	Yale	Harvard	Cornell					
June 30, 1897	9 m 21 1/5 s	Cornell	Columbia	Pennsylvania					
July 2, 1898 ¹	10 m 57 3/5 s	Cornell	Columbia	Pennsylvania					
June 26, 1899	9 m 55 s	Cornell	Columbia	Pennsylvania					
June 30, 1900	9 m 45 2/5 s	Wisconsin	Pennsylvania	Cornell					
July 2, 1901	10 m 20 1/5 s	Pennsylvania	Cornell	Columbia	Syracuse				
June 21, 1902	9 m 39 4/5 s	Cornell	Wisconsin	Columbia	Syracuse				
June 26, 1903	9 m 18 s	Cornell	Syracuse	Wisconsin	Columbia	Pennsylvania			
June 28, 1904	10 m 1 s	Syracuse	Cornell	Pennsylvania	Columbia				
June 28, 1905	9 m 39 4/5 s	Cornell	Syracuse	Columbia	Pennsylvania				
June 23, 1906	9 m 51 3/5 s	Syracuse	Cornell	Wisconsin	Columbia	Pennsylvania			
June 26, 1907	9 m 58 s	Wisconsin	Syracuse	Pennsylvania	Columbia	Cornell			
June 27, 1908	9 m 29 3/5 s	Cornell	Syracuse	Columbia	Wisconsin	Pennsylvania			
July 2, 1909	9 m 11 3/5 s	Cornell	Syracuse	Pennsylvania	Wisconsin	Columbia			
June 25, 1910	10 m 40 1/5 s	Cornell	Columbia	Syracuse	Pennsylvania	Wisconsin			
June 27, 1911	10 m 13 1/5 s	Columbia	Cornell	Syracuse	Pennsylvania	Wisconsin			
June 29, 1912	9 m 31 2/5 s	Cornell	Wisconsin	Syracuse	Pennsylvania	Columbia			
June 21, 1913	10 m 4 4/5 s	Cornell	Wisconsin	Syracuse	Pennsylvania	Columbia			
June 26, 1914	10 m 26 s	Cornell	Syracuse	Pennsylvania	Wisconsin	Columbia			
June 28, 1915	9 m 29 3/5 s	Syracuse	Cornell	Columbia	Pennsylvania				
June 19, 1916	11 m 5 4/5 s	Cornell	Syracuse	Pennsylvania	Columbia				
June 19, 1920 ²	10 m 45 2/5 s	Cornell	Syracuse	Pennsylvania	Columbia				
June 22, 1921	10 m 32 s	Cornell	Syracuse	Pennsylvania	Columbia				
June 26, 1922	9 m 20 1/5 s	Syracuse	Cornell	Columbia	Pennsylvania				
June 28, 1923	9 m 27 4/5 s	Cornell	Washington	Syracuse	Pennsylvania	Columbia			
June 17, 1924	10 m 22 3/5 s	Pennsylvania	Cornell	Syracuse	Columbia				
June 22, 1925	9 m 59 s	Syracuse	Pennsylvania	Columbia	Cornell	Wisconsin			
June 28, 1926	11 m 28 3/5 s	Columbia	California	Syracuse	Pennsylvania	Cornell			
June 29, 1927	9 m 45 s	Navy	Syracuse	Columbia	Cornell	Pennsylvania	California	Wisconsin	
June 19, 1928	9 m 42 s	Navy	Cornell	Syracuse	Washington	Pennsylvania	Columbia	California	Wisconsin
June 24, 1929	10 m 23 3/5 s	Syracuse	California	Cornell	Navy	Columbia	M.I.T.	Pennsylvania	California
June 26, 1930	11 m 18 1/5 s	Syracuse	Cornell	Columbia	Pennsylvania	Washington	Navy		M.I.T.
June 16, 1931	9 m 49 4/5 s	Washington	Cornell	Syracuse		Columbia	Pennsylvania	M.I.T.	
June 20, 1932	10 m 59 s	Syracuse	Navy	Cornell	California	Pennsylvania	Columbia	M.I.T.	
June 16, 1934	10 m 50 s	Washington	Syracuse	Cornell	Pennsylvania	Columbia	Rutgers		
June 18, 1935	10 m 29 s	Washington	California	Navy	Columbia	Syracuse			
June 22, 1936	10 m 19 3/5 s	Washington	California	Navy	Cornell	Syracuse	Columbia		

JUNIOR VARSITY EIGHTS—TWO MILES

June 26, 1914	11 m 15 3/5 s	Cornell	Columbia	Pennsylvania	Syracuse				
June 28, 1915	10 m 1/5 s	Cornell	Pennsylvania	Columbia					
June 17, 1916	11 m 15 2/5 s	Syracuse	Cornell	Columbia	Pennsylvania				
June 19, 1920 ²	10 m 45 3/5 s	Cornell	Syracuse	Pennsylvania	Columbia				
June 22, 1921	10 m 38 s	Cornell	Pennsylvania	Syracuse	Columbia				
June 26, 1922	9 m 4/5 s	Cornell	Columbia	Syracuse	Pennsylvania	Penn 150-lb.			
June 28, 1923	9 m 50 s	Syracuse	Cornell	Columbia	Pennsylvania				
June 17, 1924	10 m 36 2/5 s	Pennsylvania	Washington	Columbia	Syracuse	Cornell			
June 22, 1925	10 m 26 s	Washington	Cornell	Pennsylvania	Syracuse	Columbia			

JUNIOR VARSITY EIGHTS—THREE MILES

June 28, 1926	15 m 40 1/5 s	Washington	Pennsylvania	California	Syracuse	Cornell	Columbia		
June 29, 1927	15 m 12 4/5 s	Washington	Columbia	California	Pennsylvania	Cornell			
June 19, 1928	14 m 18 1/5 s	Navy	Cornell	Syracuse	Washington	Columbia	Pennsylvania		
June 24, 1929	15 m 21 1/5 s	Cornell	Columbia	Navy	Washington	Syracuse	Pennsylvania		
June 26, 1930	16 m 39 s	Cornell	Washington	Columbia	Syracuse	Pennsylvania	Navy		
June 16, 1931	14 m 29 3/5 s	Syracuse	California	Cornell	Columbia	Navy	Pennsylvania		
June 20, 1932	15 m 41 s	Syracuse	California	Navy	Cornell	Columbia	(M.I.T.)		
June 16, 1934	15 m 40 3/5 s	Syracuse	Navy	Cornell	California	Columbia			
June 18, 1935	14 m 58 4/5 s	Washington	Navy	Cornell	Syracuse	Columbia			
June 22, 1936	14 m 42 1/5 s	Washington	Navy	Cornell	Columbia	Syracuse			

UNIVERSITY EIGHTS—FOUR MILES

June 24, 1895	21 m 25 s	Columbia	Cornell	Pennsylvania					
June 26, 1896	19 m 59 s	Cornell	Harvard	Pennsylvania	Columbia				
June 25, 1897	20 m 34 s	Cornell	Yale	Harvard					
July 2, 1897	20 m 47 4/5 s	Cornell	Columbia	Pennsylvania					
July 2, 1898 ³	15 m 51 1/2 s	Pennsylvania	Cornell	Wisconsin	Columbia				
June 27, 1899	20 m 4 s	Pennsylvania	Wisconsin	Cornell	Columbia				
June 30, 1900	19 m 44 3/5 s	Pennsylvania	Wisconsin	Cornell	Columbia	Georgetown			
July 2, 1901	18 m 53 1/5 s	Cornell	Columbia	Wisconsin	Georgetown	Syracuse	Pennsylvania		
June 21, 1902	19 m 5 3/5 s	Cornell	Wisconsin	Columbia	Pennsylvania	Syracuse	Georgetown		
June 26, 1903	18 m 57 s	Cornell	Georgetown	Wisconsin	Pennsylvania	Syracuse	Columbia		
June 28, 1904	20 m 22 3/5 s	Syracuse	Cornell	Pennsylvania	Columbia	Georgetown	Wisconsin		
June 28, 1905	20 m 29 s	Cornell	Syracuse	Georgetown	Columbia	Pennsylvania	Wisconsin		
June 23, 1906	19 m 36 4/5 s	Cornell	Pennsylvania	Syracuse	Wisconsin	Columbia	Georgetown		
June 26, 1907	20 m 2 2/5 s	Cornell	Columbia	Navy	Pennsylvania	Wisconsin	Georgetown	Syracuse ⁴	
June 27, 1908	19 m 24 1/5 s	Syracuse	Columbia	Cornell	Pennsylvania	Wisconsin			
July 2, 1909	19 m 2 s	Cornell	Columbia	Syracuse	Wisconsin	Pennsylvania			
June 25, 1910	20 m 42 1/5 s	Cornell	Pennsylvania	Columbia	Syracuse	Wisconsin			
June 27, 1911	20 m 10 4/5 s	Cornell	Columbia	Pennsylvania	Wisconsin	Syracuse			
June 29, 1912	19 m 31 2/5 s	Cornell	Wisconsin	Columbia	Syracuse	Pennsylvania	L. Stanford		
June 21, 1913	19 m 28 3/5 s	Syracuse	Cornell	Washington	Wisconsin	Columbia	Pennsylvania		
June 26, 1914	19 m 37 4/5 s	Columbia	Pennsylvania	Cornell	Syracuse	Washington	Wisconsin		
June 28, 1915	19 m 36 3/5 s	Cornell	L. Stanford	Syracuse	Columbia	Pennsylvania			
June 17, 1916	20 m 15 2/5 s	Syracuse	Cornell	Columbia	Pennsylvania				
June 19, 1920 ²	11 m 2 3/5 s	Syracuse	Cornell	Columbia	Pennsylvania				
June 22, 1921 ⁵	14 m 7 s	Navy	California	Cornell	Pennsylvania	Syracuse	Columbia		
June 26, 1922 ⁶	13 m 33 3/5 s	Navy	Washington	Syracuse	Cornell	Columbia	Pennsylvania		
June 28, 1923 ⁶	14 m 3 1/5 s	Washington	Navy	Columbia	Syracuse	Cornell	Pennsylvania		
June 17, 1924 ⁶	15 m 2 s	Washington	Wisconsin	Cornell	Pennsylvania	Syracuse	Columbia		
June 22, 1925	19 m 24 4/5 s	Navy	Washington	Wisconsin	Pennsylvania	Cornell	Syracuse	Columbia	
June 28, 1926	19 m 28 3/5 s	Washington	Navy	Syracuse	Pennsylvania	Columbia	California	Wisconsin	
June 29, 1927	20 m 57 s	Columbia	Washington	California	Navy	Cornell	Syracuse	Pennsylvania	Cornell
June 19, 1928	18 m 35 4/5 s	California	Columbia	Washington	Cornell	Navy	Syracuse	Pennsylvania	
June 24, 1929 ⁶	22 m 58 s	Columbia	Washington	Pennsylvania	Navy	Wisconsin	Syracuse		
June 26, 1930 ⁷	21 m 42 s	Cornell	Syracuse	M. I. T.	California	Columbia	Washington	Pennsylvania	Wisconsin
June 16, 1931 ⁸	18 m 54 1/5 s	Navy	Cornell	Washington	California	Syracuse	Pennsylvania	Columbia	Wisconsin
June 20, 1932	19 m 55 s	California	Cornell	Washington	Navy	Syracuse	Columbia	Pennsylvania	M.I.T.
June 16, 1934	19 m 44 s	California	Washington	Navy	Cornell	Pennsylvania	Syracuse	Columbia	
June 18, 1935	18 m 52 s	California	Cornell	Washington	Navy	Syracuse	Pennsylvania	Columbia	
June 22, 1936	19 m 9 3/5 s	Washington	California	Navy	Columbia	Cornell	Pennsylvania	Syracuse	

¹ On Saratoga Lake, N. Y.

² On Lake Cayuga, N. Y.

³ On Saratoga Lake, N. Y. Three miles.

⁴ On Lake Cayuga, N. Y. Two miles.

⁵ Three miles.

⁶ Mass. Inst. of Technology, Syracuse, California and Cornell swamped in that order.

⁷ Navy swamped.

⁸ M. I. T. finished ninth.

*Your cigarette line
reads...
They Satisfy*



*And there's a wealth of
good taste in store for you*