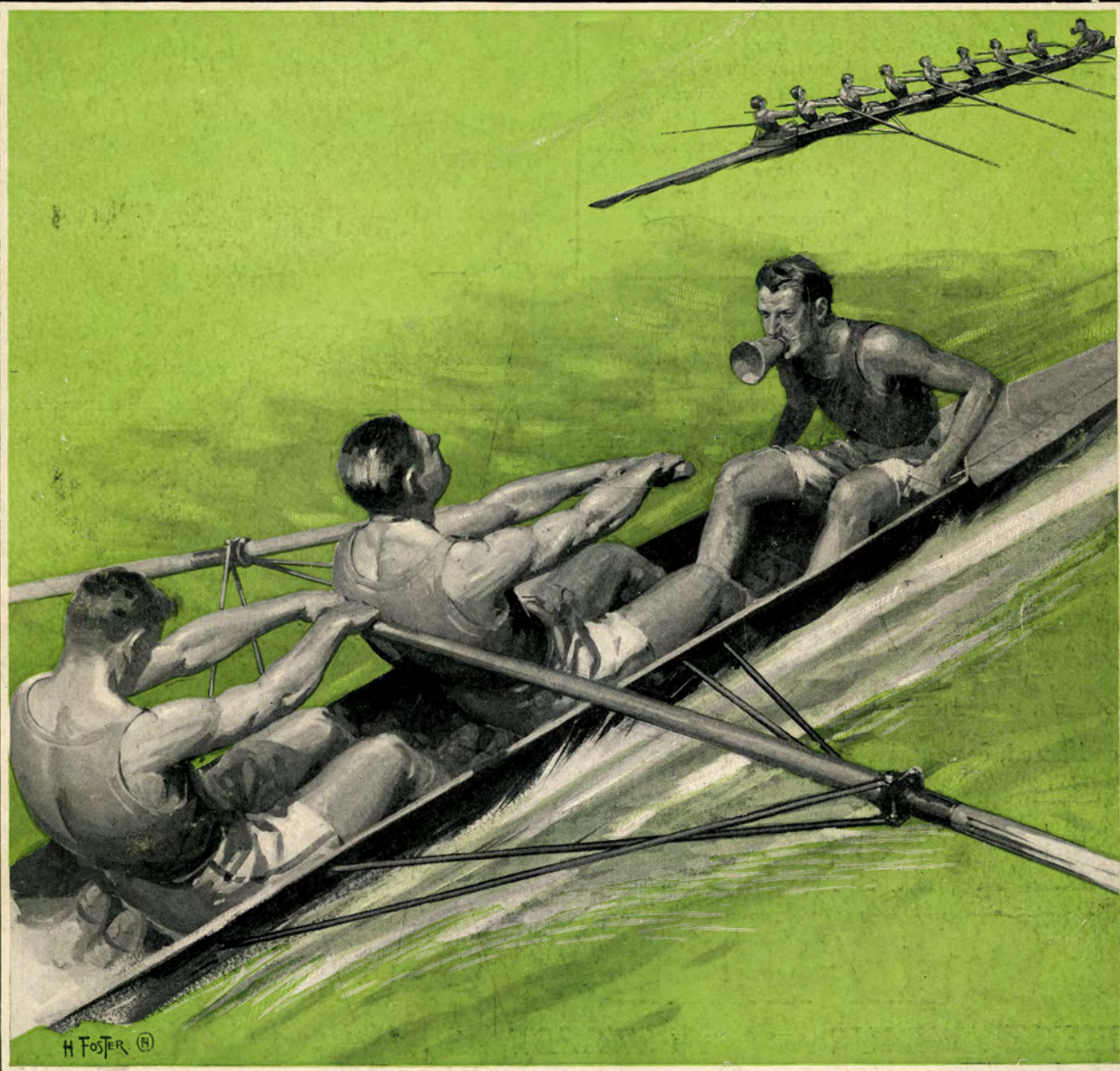
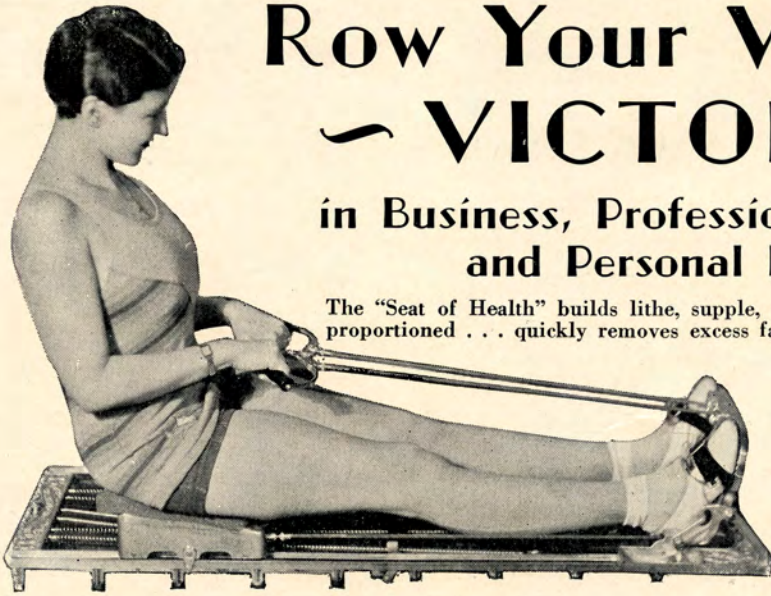


DOUGHKEEPSIE REGATTA ❖ 1931❖



OFFICIAL PUBLICATION OF THE
BOARD OF STEWARDS

PRICE THIRTY-FIVE CENTS



Row Your Way to — VICTORY —

in Business, Professional, Social
and Personal Life!

The "Seat of Health" builds lithe, supple, powerful bodies, beautifully proportioned . . . quickly removes excess fat, pulls in the waistline, reduces the bulging hips . . . sets up a vigorous circulation . . . quickens all of Nature's processes . . . clears the skin . . . puts a new sparkle in the eyes . . . gives a new spring and elasticity to every step and movement . . . creates abundant reserves of energy and endurance

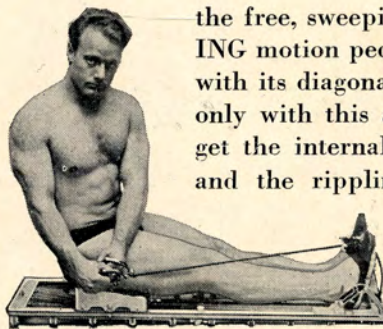
The "SEAT of HEALTH"

World-Famous Rowing Machine

THIS ingenious apparatus has made ROWING the NATIONAL INDOOR SPORT—for men, women and children. Thousands of them are rowing their way to Health!—Beauty!—Power! Just five minutes a day of delightful exercise, in your own room, keeps you in the pink of condition.

Health authorities and physical culture experts agree that rowing is the most healthful form of exercise, and a well informed athletic coach made the statement that the "Seat of Health" is superior to all other rowing machines for it alone is built on the foundation of scientific rowing machine measurement which completely covers and compels the diagonal forcep rowing stroke.

The tone rowing principle is found only in the "Seat of Health"—the flexible arm and body movement which other machines do not permit. Only in the "Seat of Health" can you get



the free, sweeping, BODY-WEAVING motion peculiar to the rower, with its diagonal forcep drive and only with this apparatus can you get the internal massaging effects and the rippling rhythmic muscular stimulation so necessary for accumulating health and bodily vigor.

A marvel of simplicity and CONVENIENCE—Rowing Machine, Abdominal Chair, Chest Expander and Pulley-Weight Machine, Weight-Lift Exerciser, Bicep and Leg Exerciser—all in one compact apparatus which weighs only 17 pounds—needs only 5 feet floor space—FOLDS INTO A SUITCASE—is SILENT—can be used in any room anywhere.

Sold by nearly all leading department stores
and sporting goods stores

SEND COUPON
NOW

P-R-31

HEALTH DEVELOPING APPARATUS CO., INC.
1 Park Place, New York, N. Y.

Please send me a FREE booklet about the "SEAT OF HEALTH" to

Name _____

Address _____



The only rowing machine that folds into a suitcase.

EMPIRE STATE . . . the world's largest office building

1248 feet high
37,000,000 cubic feet of space
62 passenger elevators
7 miles of elevator shafts
2,000,000 feet of telephone and
telegraph wires
6,400 windows
10,000,000 bricks
200,000 cubic feet of stone
400 tons of exterior
chrome-nickel steel
Floor space to shelter
80,000 people

As an achievement of building art and science Empire State brings to reality visions at least a quarter-century in advance of our normal architectural march . . .

As a spectacle Empire State towers with majestic ease over the ever-shifting silhouette of the world's greatest city . . .

As a contribution to modern business Empire State offers a world of opportunity for increased efficiency and coordinated, economical office production.

EMPIRE STATE

FIFTH AVENUE AT 34TH STREET

An internationally known address

OFFICERS
ALFRED E. SMITH

President

ROBERT C. BROWN
Vice-President & Treasurer

J. HOLLOWAY TARRY
Secretary

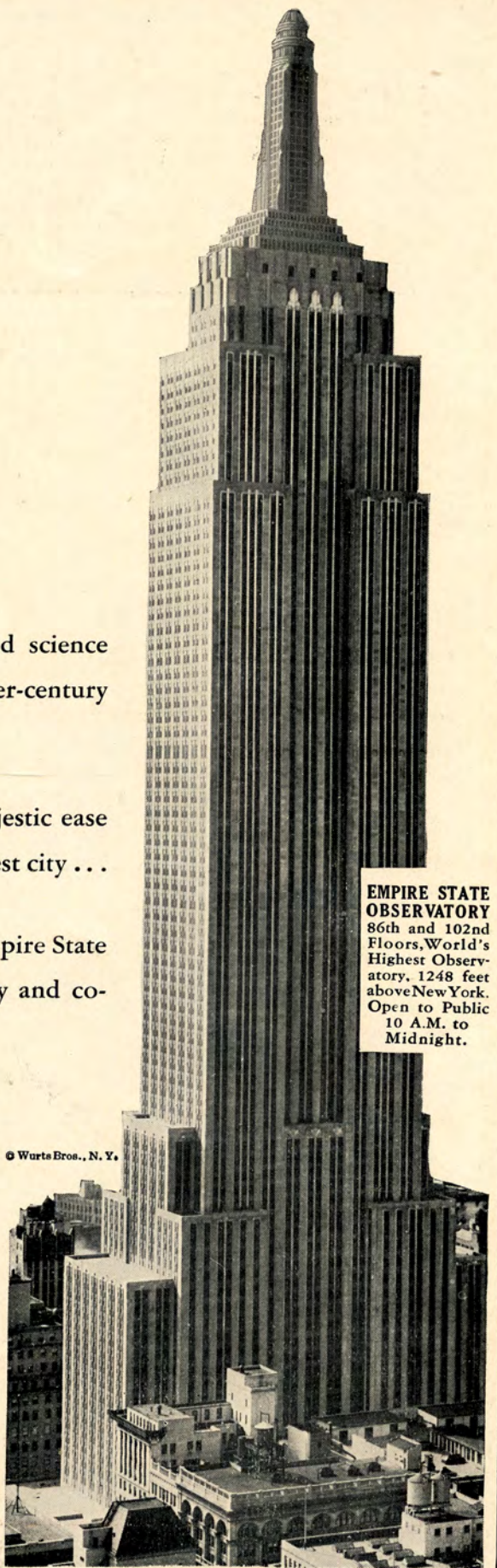
DIRECTORS

PIERRE S. DU PONT LOUIS G. KAUFMAN AUGUST HECKSCHER
ALFRED E. SMITH ELLIS P. EARLE JOHN J. RASKOB

H. HAMILTON WEBER, Rental Manager, or Your Own Broker

© Wurts Bros., N. Y.

EMPIRE STATE
OBSERVATORY
86th and 102nd
Floors, World's
Highest Observa-
tory. 1248 feet
above New York.
Open to Public
10 A.M. to
Midnight.



The Painless Operation



... High up under the dome of Boston's Massachusetts General Hospital, far removed from the wards so that the screams of sufferers under the knife will not horrify the ward patients, is the Hospital's famed operating amphitheatre. Many a medical student dreads the operations he is privileged to watch, frequently faints. But one day last week Dr. John C. Warren, Boston surgeon, led a group of surgeons and students (class of 1847) up the long stairs, eager, hurrying.

For there beckoned an interesting experiment—surgery without pain. Dr. William Thomas Green Morton, 27-year old Boston dentist, thought it possible, had experimented to that end with ether, a volatile, pungent chemical compound capable of producing insensibility. He had tried it on animals, on himself, then on his patients while extracting the roots of decayed teeth. Finally he had obtained permission from Dr. Warren to let him test his drug before an audience. One Gilbert Abbott, with a tumor on his neck, was to be the first trial.

At 11 a.m. the last privileged student hurried into the amphitheatre. Experimentee Abbott, fidgeting on the operating-table, looked anxiously at the clock. Casual talk ceased, sudden silence prevailed as the minute-hand crawled past the hour, and Dr. Morton did not appear. "He and his anesthetic! Humbugs both, no doubt!" mumbled a doctor. It became five minutes past eleven, ten, then a quarter after. The patient stirred uneasily, Dr. Warren selected an instrument, advanced to the table—useless to delay proceedings any longer. As his knife poised for the incision, Dr. Morton, breathless, apologetic, rushed in. He held in one hand a curious globe-and-tube apparatus.

In eager concentration, tensely expectant, the waiting group of surgeons and students watched while the newcomer—a charlatan perhaps, a genius possibly—adjusted his peculiar inhaling apparatus to the patient's mouth and with tense composure administered

his anesthetic. Veiled skepticism revealed itself when the patient reacted suddenly in wild exhilaration, but this exuberance subsided, relaxation took its place, then unconsciousness. Skepticism was routed, amazement paramount. Said Dentist Morton to Surgeon Warren: "Your patient is ready."

Dr. Warren began to operate, proceeded quickly, in five minutes had finished. From the patient came no cry of pain, no agony of distress, only slight movements, mumbled words as from one who stirs on the borderland of sleep....

"This, gentlemen," exclaimed Surgeon Warren, "is no humbug."

Awake, Gilbert Abbott said, "I felt no pain."

So, in part, had TIME been published in October, 1846, would TIME have reported the first public demonstration of ether as a surgical anesthetic. So, too, would TIME have reported how one Dr. Crawford Williamson Long, of Georgia, came forward later saying that he had used ether four years previous, had given it up as impractical.... So, too, would TIME have reported the bitter persecution that came to Dentist Morton when he patented his discovery as "Letheon"; the seizure of "Letheon" by the U. S. Government for its own uses; the claims of Dr. Charles T. Jackson, the Boston chemist from whom Dentist Morton had obtained his ether; the division of the Paris Academy of Medicine's 5,000 franc Monthyon Prize for 1852 between these two, with Morton proudly refusing his share; the long Congressional investigations resulting in nothing, and Dentist Morton's death in poverty in 1865.

Cultivated Americans, impatient with cheap sensationalism and windy bias, turn increasingly to publications edited in the historical spirit. These publications, fair-dealing, vigorously impartial, devote themselves to the public weal in the sense that they report what they see, serve no masters, fear no groups.

TIME

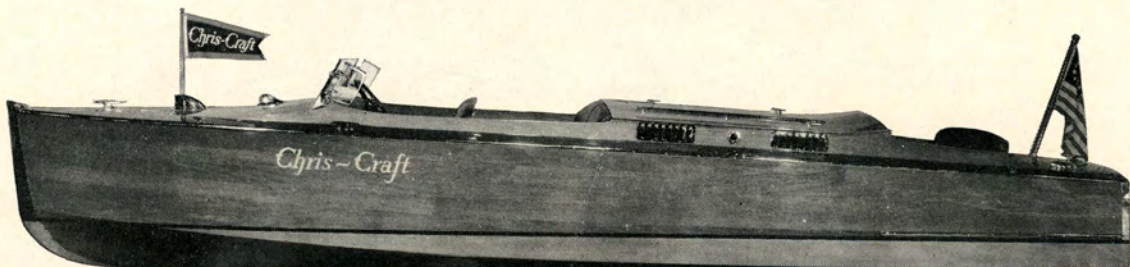
The Weekly Newsmagazine

YEARLY SUBSCRIPTION \$5 : 205 EAST 42nd STREET, NEW YORK CITY : 15 CENTS AT ALL NEWSSTANDS

This advertisement was written for TIME by Miss Catherine P. Harris of Dedham, Mass., a member of the Junior League of Boston. Other TIME advertisements written by Junior Leaguers will appear in football programs and alumni magazines next fall.

NEW LUXURY, NEW BEAUTY *added to*
the total of **Chris-Craft**
 SATISFACTION

AMERICA'S FASTEST MARINE POWERED RUNABOUT



Chris-Craft Custom 26-foot runabout, with Chris-Craft V-type 8-cylinder motor, priced at \$4795 . . . other Custom models from \$4450 to \$6500

ALWAYS . . . everywhere . . . the Chris-Craft name has been associated with brilliant performance, staunchness, dependability and safety. Yet equally notable are Chris-Craft's contributions to smartness and luxury in water transportation.

Leadership in design and equipment has never been more strikingly illustrated than in the Custom runabouts and sedans of the 1931 fleet.

In beauty and in comfort, these ten 26- and 28-foot models set a standard that is wholly new. Hulls, finished in clear varnish, have a lasting luster that adds indefinable richness to their appearance. All hardware is streamlined . . . specially designed, and plated with non-tarnishing, non-rusting, non-corroding chrome.

But the appeal of these Custom Chris-Craft is not only an appeal to the eye. The fastest and finest models are powered with the famous V-type, 8-cylinder, 250 h. p. motor designed and built in Chris-Craft shops . . . a motor that knows no superior among marine power plants. Supreme comfort is yours, too, in deeply upholstered seats of hand-tailored genuine leather. Even the high, restful backs are cushioned over springs.

In hull and motor alike, you will find the same rugged dependability that marks *all* Chris-Craft. Exclusive Chris-Craft methods, developed through 44 years of Custom boat building, assure your entire satisfaction in every particular that can interest an owner.

The nearest Chris-Craft merchant will gladly show you any of the 38 models in the new and greater Chris-Craft fleet . . . and explain how you can purchase out of income. Write for illustrated booklet.

38 models ranging in length from 15½ to 48 feet, priced from \$795 to \$35,000.



Runabouts — Sedans — Commuters — Cruisers — Yachts — Tenders

© C-C Corp., 1931 (117)

CHRIS-CRAFT CORPORATION — 105 DETROIT ROAD, ALGONAC, MICHIGAN
 New York Direct Factory Branch — 1 West 52nd St., at 5th Avenue
 Two

ANNUAL REGATTA

OF THE

Intercollegiate Rowing Association

Incorporated 1898



Held at
POUGHKEEPSIE, NEW YORK

June 16th, 1931

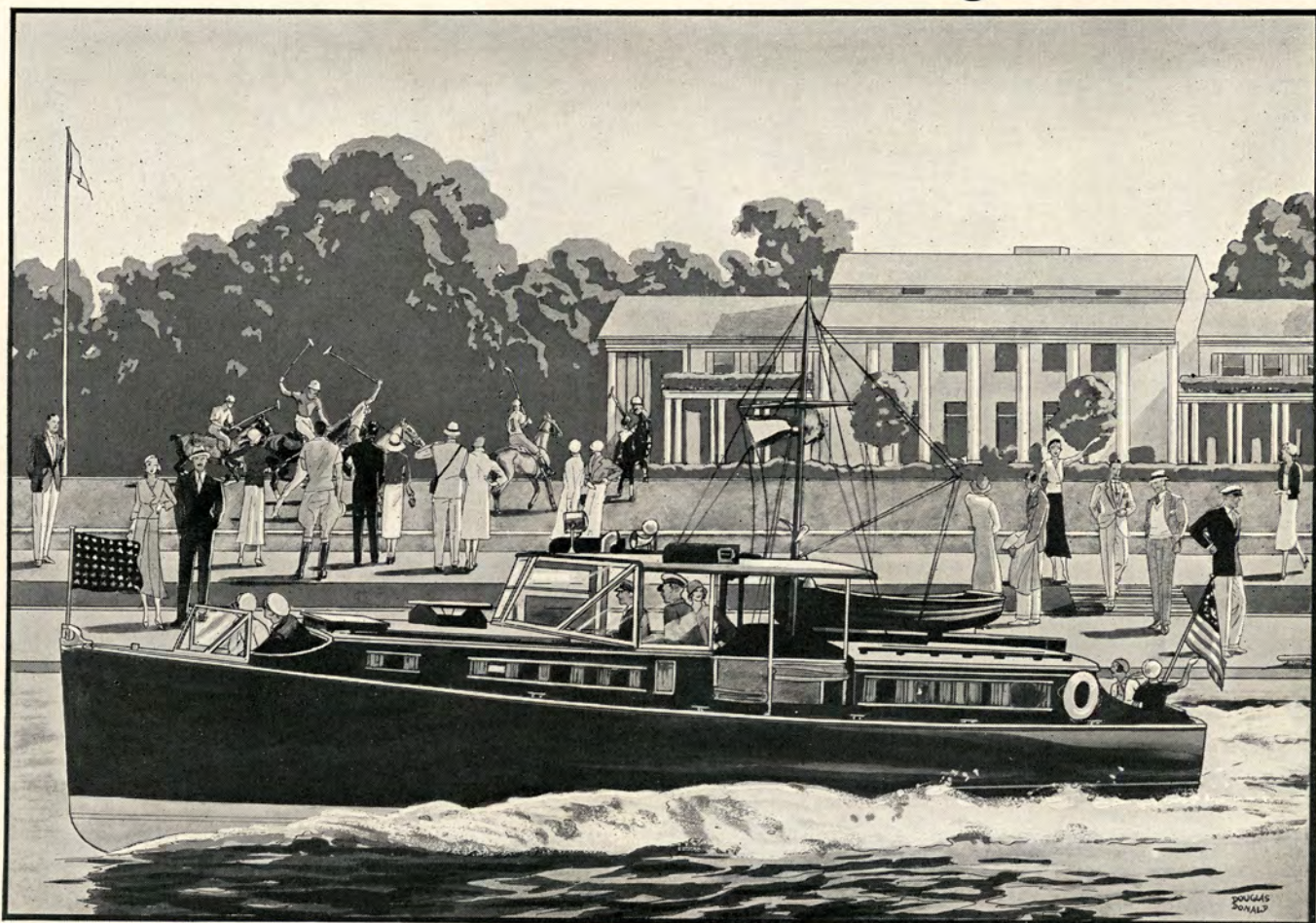


The members of the Association are Columbia, Cornell, Pennsylvania, Syracuse and the United States Naval Academy. California, Massachusetts Institute of Technology, Washington and Wisconsin are competing on invitation.

*Copyright, 1931
by the Intercollegiate Rowing
Association, Inc.*

PUBLISHED BY THE BOARD OF STEWARDS

Gens du Monde



A 42 foot standardized custom built cruiser from the board of Paine, Belknap & Skene, executed by George Lawley and Son Corp.

Many details of painstaking craftsmanship have been incorporated, especially appealing to a discriminating clientele. It is one of the fastest boats of its size or type. A single Sterling Petrel 180 to 200 H. P. engine propels at 20 miles per hour.

CONSIDER THE BASIC VALUE!

The Sterling Petrel is 15% larger than any engine comparable in price and piston displacement. The bore is 5¼", stroke 6", 779 cubic inch displacement and the price \$2500. A higher speed model rated 225 H. P. at 2100 R. P. M. is built especially for runabouts and lists at \$2700.

The Petrel turns a larger propeller without effort, as the compression is moderate. Better mechanical features, totaling hundreds of dollars of added value, are catalogued in a book which is available upon request.

Sterling Engine Company

Buffalo, New York



THE BOARD OF STEWARDS



MAXWELL STEVENSON
Columbia
CHAIRMAN



JOHN ARTHUR BROWN
Pennsylvania



© Draucker
FREDERICK H. PLUMB
Syracuse



COMMANDER F. G. REINICKE
U. S. Naval Academy

Cornell's representative on the Board, appointed to succeed the late Charles E. Treman, is MR. JOHN COLLYER. The editors regret their inability to secure a photograph of Mr. Collyer, who was in Europe at the time this program went to press.



“MAJESTIC”

8-cylinder — 3½" bore x 5" stroke

High Duty — 130-150 H.P. at 2400-3200 R. P. M.
With Reduction Gear, 130 to 145 H. P. at 1200-1400 R. P. M. on Propeller Shaft.

“IMPERIAL”

6-cylinder — 3⅝" bore x 5" stroke

High Duty — 65-125 H. P. at 1600 to 3200 R. P. M.
With Reduction Gear, 65 to 125 H. P. at 800-1600 R. P. M. on Propeller Shaft.

“ROYAL”

6-cylinder — 3¼" bore x 5" stroke

High Duty — 50-85 H. P. at 1600-2800 R. P. M.
Medium Duty — 30-50 H. P. at 1000-1600 R. P. M.

“CROWN”

6-cylinder — 3¼" bore x 4⅜" stroke

High Duty — 48 to 85 H. P. at 1600 to 3200 R. P. M.
With Reduction Gear, 45 to 75 H. P. at 600 to 1100 R. P. M. on Propeller Shaft.

Chrysler—the outstanding gasoline marine engine for yacht tenders and runabouts. When fitted with reduction gears, they are the most economical, efficient and low-cost power plants for cruisers and auxiliaries.

For information, address Amplex Manufacturing Company (Division of Chrysler Corporation), Detroit, Michigan.

19 Years
before the first
Poughkeepsie
Regatta in 1895—



SPALDING

started making
Athletic
Equipment

With a background of over half a century devoted to supplying athletes' wants, you can be sure that whatever bears the Spalding Trade Mark is athletically correct.

A. G. Spalding & Bros.

NEW YORK STORES
518 Fifth Avenue 28 New Street 105 Nassau Street
And all principal cities



**IN THE
GRAND CENTRAL
SECTION**

Near to everything in New York... railroad terminals, Times Square, Fifth Avenue shops, etc. As homelike as though you had planned it yourself.
Radio in every room.

\$3.00	800
PER DAY AND UP	ROOMS 800 BATHS

Single rooms \$3 to \$5 per day
Double rooms \$4 to \$6 per day

**HOTEL
MONTCLAIR**
49th to 50th Sts., on Lexington Ave.
NEW YORK CITY

S. Gregory Taylor, President
Oscar W. Richards, Manager

OFFICIALS

Board of Stewards of the Intercollegiate Rowing Association

MAXWELL STEVENSON, *Columbia*
CHAIRMAN

JOHN COLLYER, *Cornell*
JOHN ARTHUR BROWN, *Pennsylvania*
FREDERICK H. PLUMB, *Syracuse*
COMMANDER F. G. REINICKE, *Navy*

REYNOLDS BENSON, *Columbia*, Executive Secretary

Referee

JULIAN W. CURTISS, *Yale*

Alternate Referee

ROBERT F. HERRICK, *Harvard*

Stewards' Representative

C. LOUIS BORIE, *Pennsylvania*

Chief Timer

ELIOT FARLEY, *Harvard*

Assistant Timers

DAVID M. GOODRICH, *Harvard*
CHARLES M. SHEAFE, *Harvard*
LANGHORNE GIBSON, *Yale*
RADCLIFFE ROMEYN, *Yale*
FREDERICK SHEFFIELD, *Yale*
ELLIOTT H. LEE, *Princeton*
GORDON G. SIKES, *Princeton*

Chief Judge at Finish

COLLES J. COE, *Yale*

Assistant Judges

HARRY S. MIDDENDORF, *Harvard*
JAMES TALCOTT, *Harvard*
PHELPS BARNUM, *Yale*
PIERREPONT M. SCHREIBER, *Yale*
JAMES R. SHELDON, *Yale*

Referee's Boat

The Gypsy

Owner, ROBERT F. HERRICK, *Harvard*



h o t e l

ST. MORITZ

ON THE PARK

50 CENTRAL PARK SO., N. Y.

Direction: S. GREGORY TAYLOR

The double joy of living "in the Continental manner" ...with American economy ...exists in all the world ...at the St. Moritz only.

Single rooms or suites, for transient or permanent residence ...Harold Stern's orchestra plays nightly in the Grill. Luncheon in the Sky Salon ... with a thrilling aerial view. For light repasts ... RUMPELMAYER'S, of international fame.



BERMUDA

via the
MOST LUXURIOUS
ROUTE

All-Expense
VACATIONS

5 DAYS \$66 up
6 DAYS \$72 up
9 DAYS \$90 up



Correspondingly low
Summer rates for 12,
13 and 16 Day Tours.

Above rates include first class
accommodations and meals
aboard ship and at Bermuda
hotel.

Bermuda! Anyone can afford it now,
with the summer rates the lowest in years.

SEA-GOING SPORT CLUBS

And 4 days at sea in Transatlantic luxury.
On the magnificent "Bermuda," with the
largest sports deck afloat. Or the richly-
appointed "Veendam," distinguished Hol-
land America liner. Deck activities, danc-
ing and glorious nights at sea.

SAILINGS EVERY WEDNESDAY AND SATURDAY

FURNESS

Bermuda Line

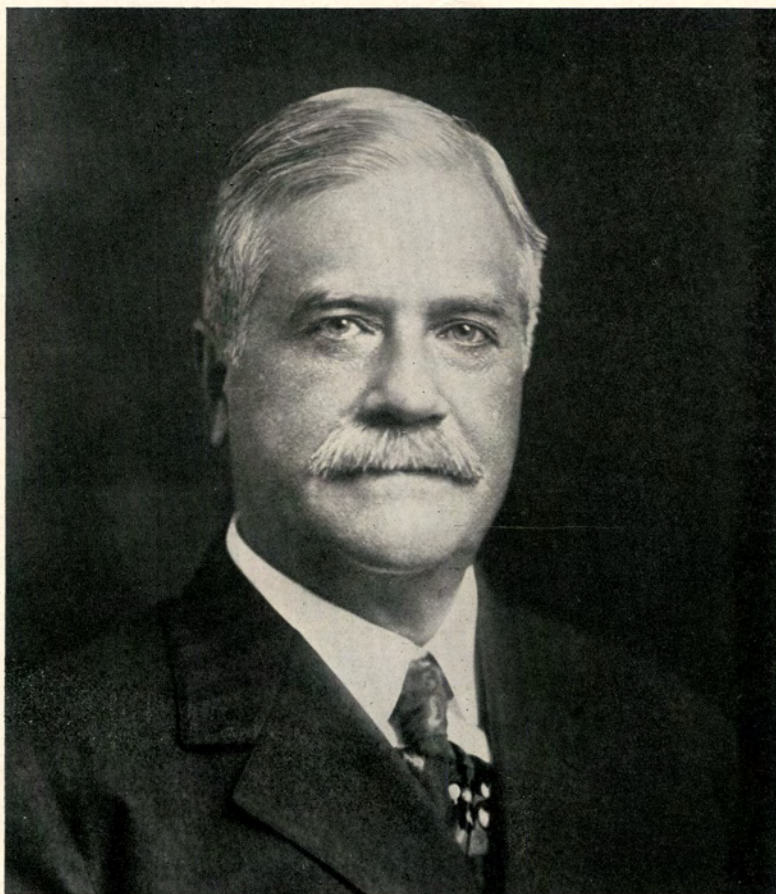
34 Whitehall St. (where Broadway begins)
565 Fifth Ave., New York or any Authorized Agent

GOWNS TO ORDER

MISS ETHEL, 54 West 57th Street, New
York City, specializes in individual gowns
for all occasions. You will be interested to
know that we receive something new from
Paris each month.

Special Sale June and July.

Telephone Circle 7-3137-3138



JULIAN W. CURTISS
REFEREE

The waterfront is best in summer

When in Bermuda in summer, get the most out of your vacation by living on the cool waterfront. All of these "Hotels of Distinction" are quietly situated, on the water, and afford entrancing views:

BELMONT MANOR INVERURIE FRASCATI

(open all year)

THE PRINCESS

(December to May)

Own golf courses, tennis, sailing, dance orchestras, etc.

For definite reservations, rates and information, write or phone any authorized Tourist Agency, Bermuda Hotels Associated Inc., 250 W. 57th St., New York, Telephone Columbus 5-0012, or address our Hotel Managers at

BERMUDA

*Standard service
for the
Valley*



Central Hudson
Gas & Electric
Corporation

FACEALITE ELECTRIC MIRRORS



Fine
for
Shaving

Also
for
Make up

A light concealed behind a mirror is reflected upwardly on your face. No glare. No shadow.

This cabinet shown can be hung anywhere and plugged in.

Price \$10.00.

METROPOLITAN
ELECTRIC MFG. CO.

14th St. & East Ave., Long Island City, N. Y.



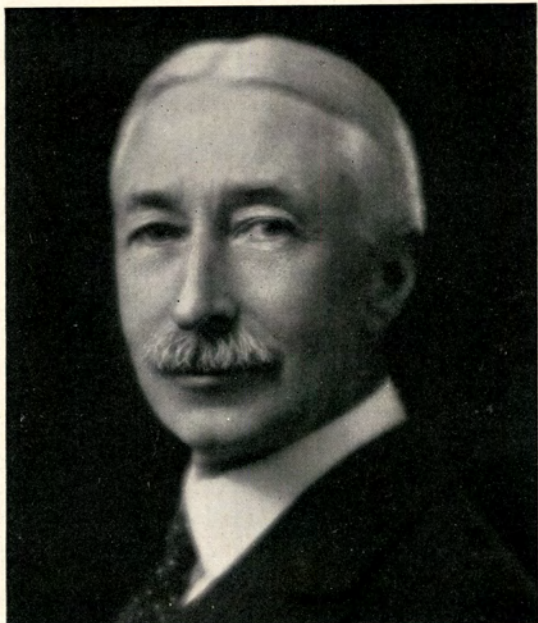
**real
southern food**

Have you a soft spot for the kind of "vittels" they serve down below the Mason-Dixon line? Then come to the Dixie and chase away the "Home-cooking Blues." *Plate Luncheon* . . . 85¢. *Table d'hote Dinner* . . . \$1.50. You could live here, too, and like it. A quiet, homey atmosphere, and every comfort, all yours for as little as \$3 a day. Convenient? If you can find Times Square you can't miss the Dixie.

Single Rooms for \$3 a Day

Hotel Dixie

42nd to 43rd Street, New York City
between Broadway & 8th Avenue



PETER H. TROY, *Chairman*
REGATTA COMMITTEE OF POUGHKEEPSIE



© *White* REYNOLDS BENSON, *Columbia*
EXECUTIVE SECRETARY OF THE BOARD OF STEWARDS





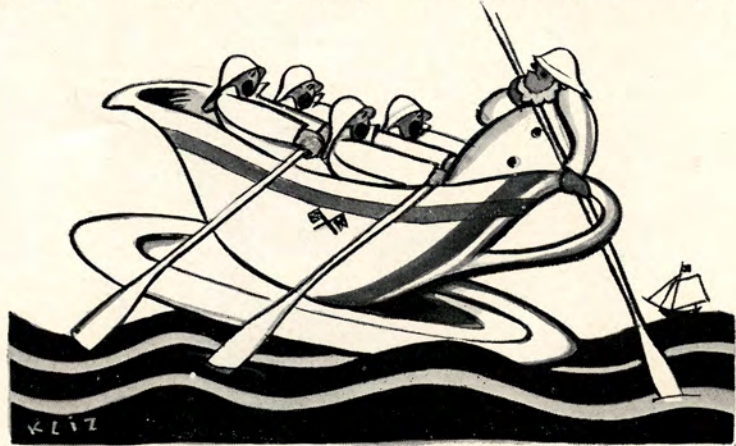
China service of English ware, ivory bodied and edged with marine blue band and line. There are two enamel flags on each piece. 37 pieces, \$45.

Yacht weight crystal set. Six highball glasses, six tumblers and six cocktail glasses, decorated with enamel flags and blue bands and line, \$29.

Silver plated silver service. Stainless steel knife blades. 31 pieces, \$25. Complete yacht service for six, including china, crystal and silver, \$95.

yo - HO bo bo HO!

Tars are tripping hornpipes and bellowing chanteys of praise for Ovington's maritime china and crystal. No finer table services have embarked on the briny since the tide came in on Noah. They're durable; they're inexpensive; they're modern and graceful as the next Cup Defender! China for six with your own and your club's insignia from \$45. Crystal from \$29.



OVINGTON'S

YACHT CHINA → CRYSTAL → SILVER → 3rd FLOOR
437 FIFTH AVENUE, NEW YORK

Up-to-date PROTECTION and SERVICE

THE very latest scientific elements of protection have been employed in the engraving of the new National City Bank Travelers Letter of Credit and Travelers Checks. The unusually attractive appearance of these instruments is only incidental to their efficiency in safeguarding the funds of travelers and protecting banks, transportation companies and merchants against the possibility of loss. City Bank *travel money* is as good and as safe as it looks.

City Bank Travelers Checks are issued by one hundred foreign offices of this organization, by fifty-four branches in Greater New York and by thousands of correspondents throughout the world. They are accepted everywhere and serve the purpose of an international currency.

Our offices in main tourist centers have made a special feature of service to travelers, supplying information regarding passport and customs regulations, resorts, routes and excursions; and keep on hand lists of reliable interpreters and guides. Travelers receive a cordial welcome and many helpful attentions in City Bank offices abroad.

City Bank TRAVEL MONEY represents the utmost in protection AND service.



FOUNDED IN 1812

Branches and
Correspondents
Throughout
the World

The National City Bank of New York

Head Office: 55 WALL STREET, NEW YORK

PROGRAM

4.00 p.m., d.l.s.

Freshman Eight-Oared Shells

TWO MILES

TROPHY—The Stewards' Cup, presented in 1900, by Francis S. Bangs, Columbia, to be held by the winner for one year. Present holder, Syracuse.

RECORD—9 m., 11½ s., by Cornell, July 2, 1909.

COURSE POSITIONS

Course No. 1—Washington
Course No. 2—Columbia

Course No. 3—Cornell
Course No. 4—Pennsylvania
Course No. 5—Syracuse

Course No. 6—M. I. T.
Course No. 7—Navy

ORDER OF FINISH—

- | | |
|---|---|
| 1 <i>Washington</i> , Time,m.....s. | 5 <i>Columbia</i> , Time,m.....s. |
| 2 <i>Cornell</i> , Time,m.....s. | 6 <i>Pennsylvania</i> , Time,m.....s. |
| 3 <i>Syracuse</i> , Time,m.....s. | 7 <i>M. I. T.</i> , Time,m.....s. |
| 4 <i>Navy</i> , Time,m.....s. | |

Water Conditions... *good* Wind... *north*

5.00 p.m., d.l.s.

Junior 'Varsity Eight-Oared Shells

THREE MILES

TROPHY—The Kennedy Challenge Trophy, presented in 1899, by Davidson Kennedy, Pennsylvania, to be held by the winner for one year. Present holder, Cornell.

RECORD—14 m. 18½ s. by U. S. Naval Academy, June 19, 1928. 9 m., 45¼ s., by Cornell, June 26, 1922, for two-mile course.

COURSE POSITIONS

Course No. 1—Columbia
Course No. 2—Pennsylvania

Course No. 3—Cornell
Course No. 4—California

Course No. 5—Navy
Course No. 6—Syracuse

ORDER OF FINISH—

- | | |
|---|------------------------------|
| 1 <i>Syracuse</i> , Time,m.....s. | 4, Time,m.....s. |
| 2, Time,m.....s. | 5, Time,m.....s. |
| 3, Time,m.....s. | 6, Time,m.....s. |

Water Conditions... *good rain* Wind... *north*

6.00 p.m., d.l.s.

University Eight-Oared Shells

FOUR MILES

TROPHY—The 'Varsity Challenge Cup, presented in 1898, by Dr. Louis L. Seaman, Cornell, to be held by the winner for one year. Present holder, Cornell.

RECORD—18 m., 35¼ s., by California, June 19, 1928. 13 m., 33¾ s., by U. S. Naval Academy, June 26, 1922, for three-mile course.

COURSE POSITIONS

Course No. 1—Pennsylvania
Course No. 2—Columbia
Course No. 3—M. I. T.

Course No. 4—Washington
Course No. 5—California
Course No. 6—Wisconsin

Course No. 7—Navy
Course No. 8—Cornell
Course No. 9—Syracuse

ORDER OF FINISH—

- | | |
|-------------------------------------|------------------------------|
| 1 <i>Navy</i> , Time,m.....s. | 6, Time,m.....s. |
| 2, Time,m.....s. | 7, Time,m.....s. |
| 3, Time,m.....s. | 8, Time,m.....s. |
| 4, Time,m.....s. | 9, Time,m.....s. |
| 5, Time,m.....s. | |

Water Conditions... *good raining very hard* Wind... *Slight North*

NOTES:—All course positions are numbered from the west shore of the River.—The Freshman and Junior 'Varsity Races start respectively one and two miles above the Railroad Bridge. The 'Varsity Race starts three miles above the Bridge, a mile above the Columbia Boat House. The finish line for all races is one mile below the Bridge.

DATA ON HOW TO IDENTIFY THE CREWS, ORDER OF FINISH, ETC., WILL BE FOUND ON PAGE FIFTEEN

ESTABLISHED 1818

Brooks Brothers,
CLOTHING,
Gentlemen's Furnishing Goods,

MADISON AVENUE COR. FORTY-FOURTH STREET
NEW YORK

Outfits for Summer
Sport

Send for Illustrations of Shirts

BRANCHES

NEW YORK: ONE WALL STREET
BOSTON: NEWBURY COR. BERKELEY STREET
NEWPORT PALM BEACH



© BROOKS BROTHERS

MONTAGUE OAR *and* PADDLE CORP.

FOXBORO • MASSACHUSETTS

The superiority of the "Ted Shea Bi-tubular" oar has been so clearly demonstrated why listen to anyone who tries to interest you in any other type of oar?

Pause and reflect that while the hand that rocks the cradle may rule the world, the hand that pulls a "Ted Shea Bi-tubular" oar rules the waves.

MONTAGUE OAR *and* PADDLE CORP.

FOXBORO • MASSACHUSETTS

Write for our Catalogue

HOW TO IDENTIFY THE CREWS

The competing crews may be identified by the color of the coxswain's jersey and of the flag on the bow of the shell, as follows:

Columbia—light blue	California—gold
Cornell—light red and white	M. I. T.—grey
Pennsylvania—dark blue and red	Washington—white
Syracuse—orange	Wisconsin—red
Navy—dark blue	

ORDER OF FINISH

Announced by Salvo of Bombs

In each race, the *first* crew to pass under the Railroad Bridge will be announced by a salvo of bombs, the number of bombs fired corresponding to the number of the *lane* of the leading crew. The *first* crew to cross the finish line in each race will be announced in the same manner.

Indicated by Flags

The order in which the crews *finish* will also be indicated by flags suspended from both the Railroad and the new Automobile bridge, the regular college colors of the winning crew being the top flag. Flags will also be hoisted on the mast of the referee's boat, the colors of the winning crew being the uppermost flag—the rest hoisted in the order of finish. The flags will be of the following colors:

Columbia—light blue and white	California—dark blue and gold with white "C"
Cornell—red and white	M. I. T.—diagonal scarlet and grey
Pennsylvania—red and dark blue	Washington—purple and gold with white "W"
Syracuse—orange with dark "S"	Wisconsin—cardinal with white "W"
Navy—blue and gold with white "N"	

By Bulletin Board

A Bulletin Board has been erected on the Judges' Boat, located at the Finish Line. The order in which the *first three* crews finish in all races will be indicated on this Board, the lane number of the crew being used in place of its college name. This use of the lane number was found necessary owing to the distance of the Judges' Boat from the shore.

The lane number of the winning crew will be at the top, and below it will be the lane numbers of the other two crews, in the order of finish.

The time made by each crew will appear opposite the number of its lane. For example, if the crew in lane No. 10 won, and its time was 20 minutes and 30 1-5 seconds, the top line on the board would read: "10-20-30-1."

LANES OF THE CREWS

The lanes of the several crews (numbered from the west shore of the river) are as follows:

<i>Freshman</i>	<i>Junior Varsity</i>	<i>Varsity</i>
No. 1..... Washington	No. 1..... Columbia	No. 1..... Pennsylvania
No. 2..... Columbia	No. 2..... Pennsylvania	No. 2..... Columbia
No. 3..... Cornell	No. 3..... Cornell	No. 3..... M. I. T.
No. 4..... Pennsylvania	No. 4..... California	No. 4..... Washington
No. 5..... Syracuse	No. 5..... Navy	No. 5..... California
No. 6..... M. I. T.	No. 6..... Syracuse	No. 6..... Wisconsin
No. 7..... Navy		No. 7..... Navy
		No. 8..... Cornell
		No. 9..... Syracuse

COVER DESIGN

The Editors are indebted to Cutler-Hammer, Inc., of Milwaukee, Wisconsin, for the cover design of the Official Program.

THE COACHES
of the
INTERCOLLEGIATE ROWING ASSOCIATION
CREWS



GLENDON, OF COLUMBIA

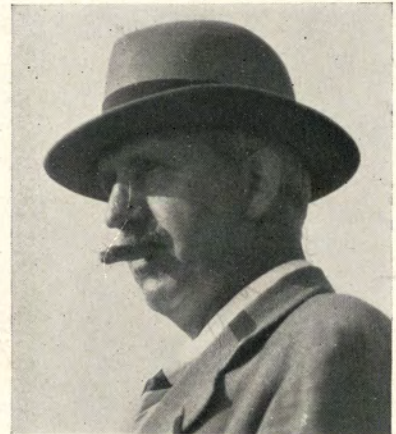
Richard J. Glendon became crew coach at Columbia after a successful career at the Naval Academy, where he had first acted as assistant to his father, Richard A. Glendon, and later was head coach. Since 1926 Glendon's Columbia crews have won two Varsity championships at Poughkeepsie—1927 and 1929—and finished second once, forcing California to set a new four-mile record to defeat them in 1928. Glendon's Naval Academy eight won the Varsity race in 1925.

GLENDON, OF NAVY

Richard A. ("Dick") Glendon, the originator of the famous "Glendon stroke," came to the Naval Academy in the spring of 1904 and entered a brilliant career as director of rowing. In 1923 he retired, leaving his son to carry on the work. Again in the spring of 1928 "Dick" returned to the Academy as head coach. He is known as the man "who says little, and when he does, it is only through a megaphone." His success is marked by the fact that he has lost only about one-fourth of the total number of races entered, and in 1920 coached Navy's World Champion Crew.



© Pickering



WRAY, OF CORNELL

Previous to taking up his duties at Cornell in 1926, James Wray had had many successful years with prominent eastern boat clubs, but particularly as head coach at Harvard, where his crews had a record of six consecutive victories over Yale. Coming, as he did, at a time when rowing at Cornell was at a low ebb, he has brought the Cornell Navy in five short years to the position of one of the serious eastern contenders.

TEN EYCK, OF SYRACUSE

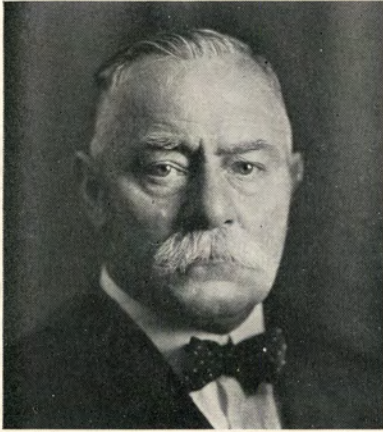
James A. Ten Eyck has become a permanent part of the rowing tradition at Syracuse. As coach of the sport there for over a quarter of a century, except for one year during the World War, he has made the sport popular and successful. With the death of Coach Courtney of Cornell and the retirement of such men as Wright and Rice, Ten Eyck is probably the only active collegiate rowing coach of the old school. At 81 he retains all the vigor and keenness of mind that marked his own rowing days of more than fifty years ago.



CALLOW, OF PENNSYLVANIA

Russell S. Callow is serving his fourth year as head coach of rowing at Pennsylvania. He is a graduate of the University of Washington in the class of 1915, and was captain of the crew in his senior year. During the nine years of his coaching career several of his crews have won first place at Poughkeepsie.

**THE COACHES
of the
VISITING CREWS**



HAINES, OF M. I. T.

Bill Haines came to Tech in 1924, after having served for seven years as head coach at Harvard. In 1911, when "Bill" came to America from England, he was known as one of the best oarsmen in that country, having in earlier days won the single-scutt championship of England and stroked a four-oared shell which won the English championship for three consecutive years. During his first years at M.I.T. he had many difficulties to overcome, but each year the quality and popularity of rowing at Tech improved under his supervision. Last year his 'varsity crew finished in third position at Poughkeepsie, after having led the field for the first two miles.



© M. L. Cohen
EBRIGHT, OF CALIFORNIA

Carroll "Ky" Ebright, now in his eighth year as crew coach at California, learned rowing at the University of Washington, where he was coxswain in pre-war years. After a year of assistant coaching at Washington, he came to Berkeley in 1924 as head crew coach. A long, hard pull for recognition brought its first reward in 1927, when California defeated Washington, and achieved complete victory in 1928, when California defeated thirteen American, Canadian and European crews at all distances from 2,000 meters to four miles, to win the undisputed championship of the world.



MURPHY, OF WISCONSIN

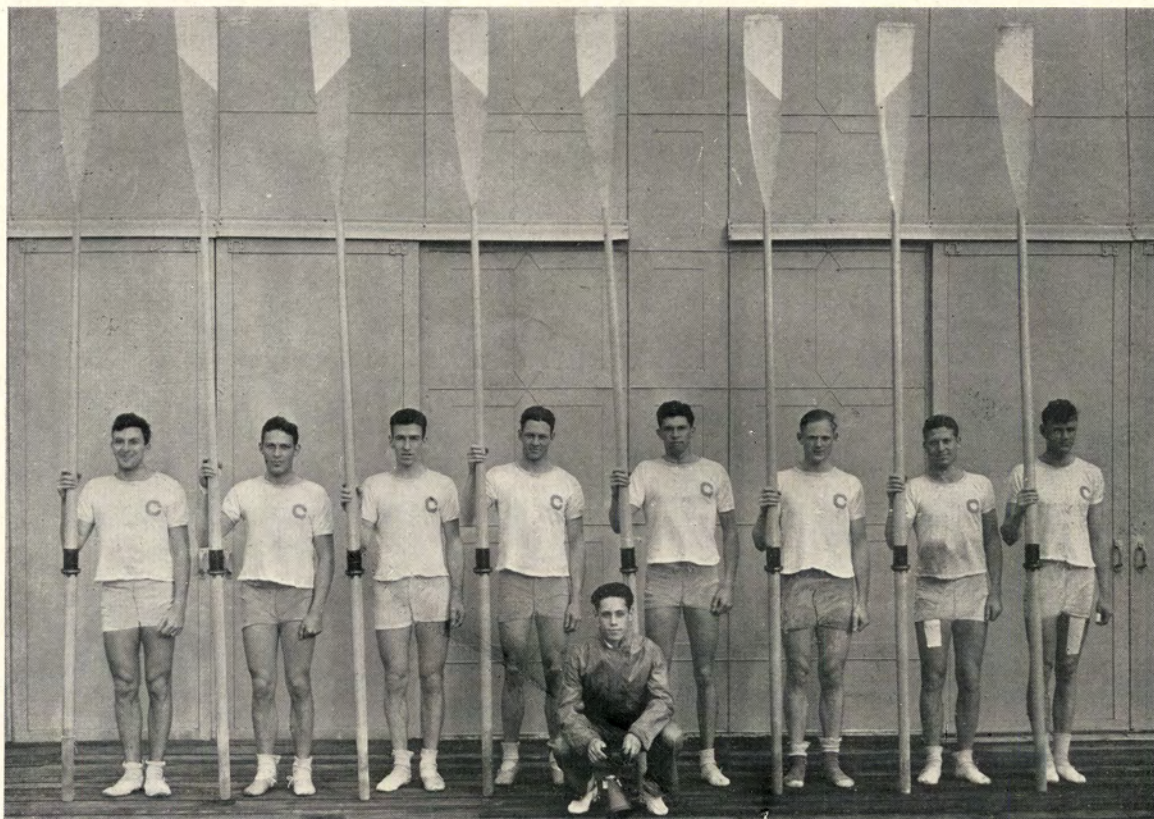
George "Mike" Murphy, former Washington stroke and crew captain, went to Wisconsin after six years experience at Yale, where he turned out four championship freshman crews. He brought with him the famous "Washington Stroke," and also his own vibrant personality. At present he is one of the youngest crew coaches in the country. This year's crew will be his third product in the Poughkeepsie Regatta.



ULBRICKSON, OF WASHINGTON

Alvin Ulbrickson, one of the youngest major crew coaches in the country, is a product of the University of Washington, and is carrying on the rowing system first introduced by Connibear and carried on by Leader and Callow. He stroked the 'Varsity in '24, '25 and '26, during which time Washington twice won the 'Varsity race at Poughkeepsie, placed second once, and defeated their ancient rival California each year. In 1927 he became assistant to Callow at Washington, and was appointed head coach when Callow accepted a contract with Pennsylvania that fall. He hit his stride in 1930 to take a three-way sweep from California, to be followed in 1931 by another three-way victory that set new Coast records for 'Varsity, Jayvee and Freshman rowing.

COLUMBIA

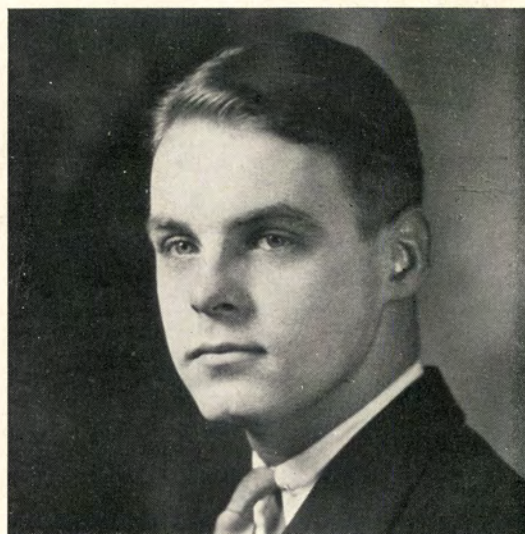


1931 'VARSITY

Position	Name	Age	Height	Weight
Bow	Walter, Henry	20	6' ½"	175
No. 2	Spiller, Clifford	22	6' 1"	178
No. 3	Ward, Robert	21	6' 3"	180
No. 4	Lozier, Edward	24	6' 2½"	177
No. 5	Grafer, Harold	21	6' 2¾"	183
No. 6	Wagner, Peter	19	6' 1½"	185
No. 7	Ganzle, Carl	22	6' 1"	180
Str.	Sykes, Macrae	20	6' 3"	172
Average		21	6' 2"	178¾
Cox.	Frechtel, Leon	19	5' 7"	117



CARL GANZLE, *Captain*



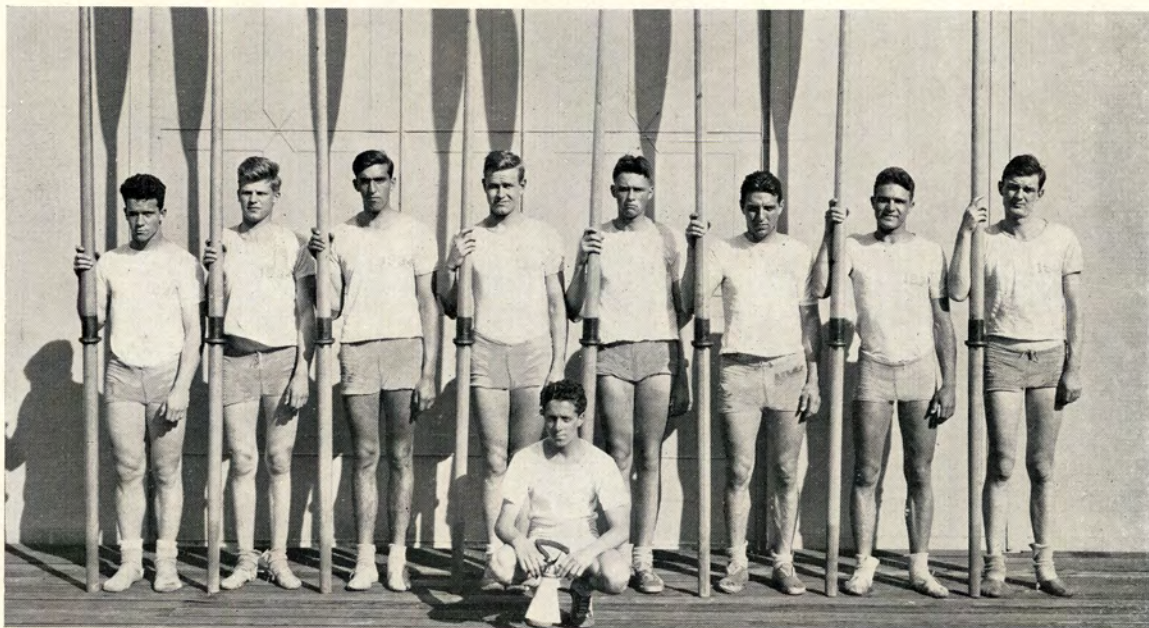
J. LINDSEY WARWICK, *Manager*

COLUMBIA



© Wide World

JUNIOR VARSITY



FRESHMAN CREW

JUNIOR VARSITY

Position	Name	Age	Height	Weight
Bow	Beaujean, Alfred	19	6' ½"	177
No. 2	Vincent, James	19	6' ½"	179
No. 3	Wood, R. Shelley, Jr.	21	6' 1"	180
No. 4	McCaleb, Walter	21	6' ½"	180
No. 5	Prendergast, John	21	6' 1"	180
No. 6	Clugh, Heber	21	6' 4"	185
No. 7	Kindermann, Wilfred	20	6' 1"	176
Str.	McDuffee, William	20	6'	175
	Average	20¼	6' 1"	179
Cox.	Read, Donald	19	5' 8"	113
Subs.	Farwell, Fred	20	6' 2"	170
	Noble, John	21	6' 1"	176
	Ryan, John	18	6' 1"	175
	Wilkins, Edward	20	6' 1"	170

FRESHMAN

Position	Name	Age	Height	Weight
Bow	Hlavac, Edward G.	18	5' 11"	174
No. 2	Keller, Charles	19	6' 1½"	175
No. 3	Rodman, Lavern	19	5' 11"	180
No. 4	Hauser, John	19	6' 4"	184
No. 5	Hinck, Otto	20	6' 4"	178
No. 6	Wilder, Newell	19	6'	186
No. 7	Singer, Edwin	19	6' 1"	175
Str.	Fowler, Anson	19	6' 2"	172
	Average	19	6' 1½"	178
Cox.	Sheffer, Ralph	17	5' 5"	105
Subs.	Wranitzky, Alfons K.	17	6'	185
	Michaelman, Myron L.	18	6' 1½"	173
	McCoy, Stephen M.	17	5' 11"	170
	Colligan, Eugene V.	18	6' 2½"	185
	Solomon, Edward	17	5' 6"	106

CORNELL



© Morgan

1931 'VARSITY

Position	Name	Age	Height	Weight
Bow	Austin, S. Y.....	22	6'	174
No. 2	Roeder, E.	21	6' 2"	173
No. 3	Parsons, G. S.....	22	6' 2"	180
No. 4	Heidelberger, R. J.....	23	6' 2"	194
No. 5	McManus, P. J.....	30	6' 2"	194
No. 6	Clark, B. B.....	23	6' 5"	206
No. 7	Ives, C. K.....	21	6' 3"	184
Str.	Wilson, R. McJ.....	20	6' 2"	171
Average		22 $\frac{3}{4}$	6' 2 $\frac{1}{4}$ "	184 $\frac{1}{2}$
Cox.	Burke, J. B.....	21	5' 6"	111

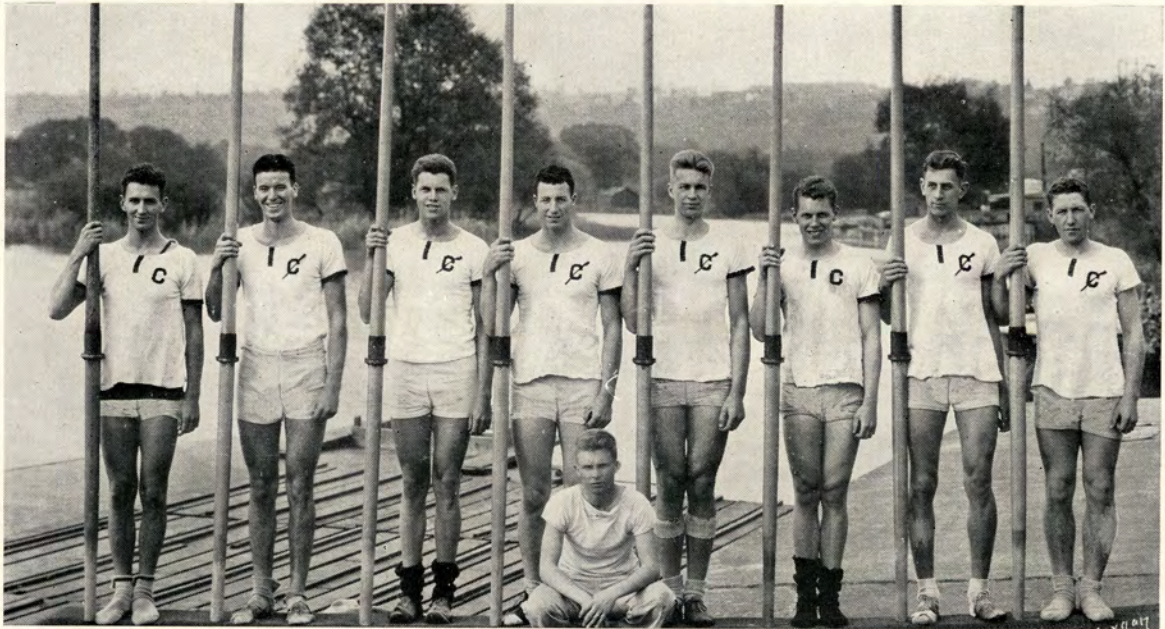


RICHARD HEIDELBERGER, *Captain*



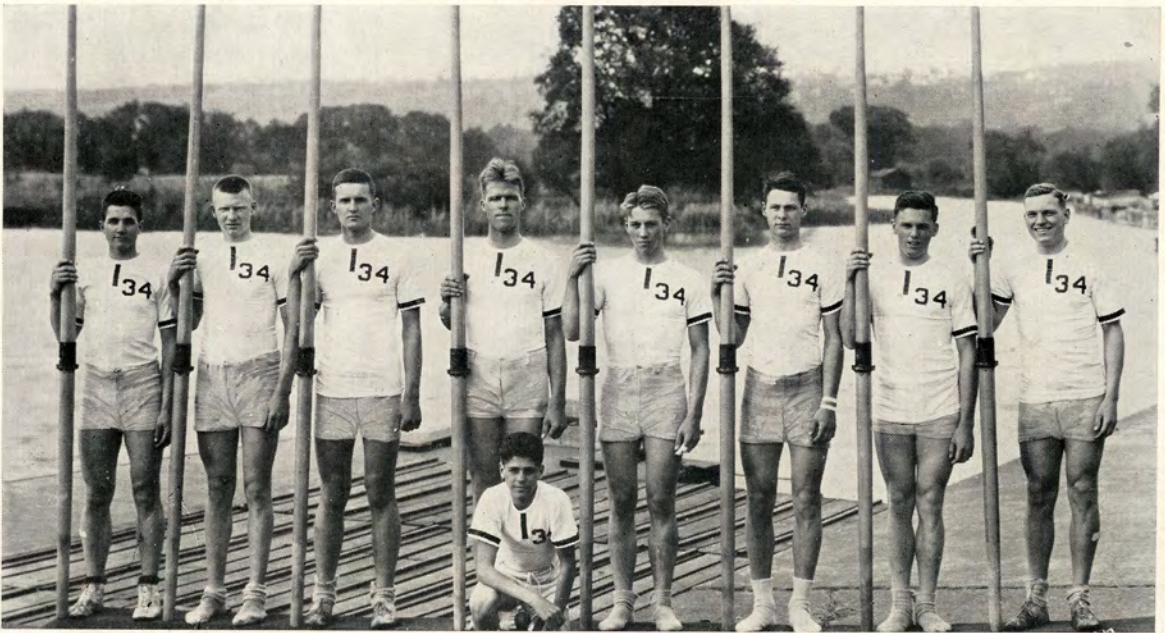
CHARLES L. MCGAVERN, *Manager*

CORNELL



© Morgan

JUNIOR VARSITY



© Morgan

FRESHMAN CREW

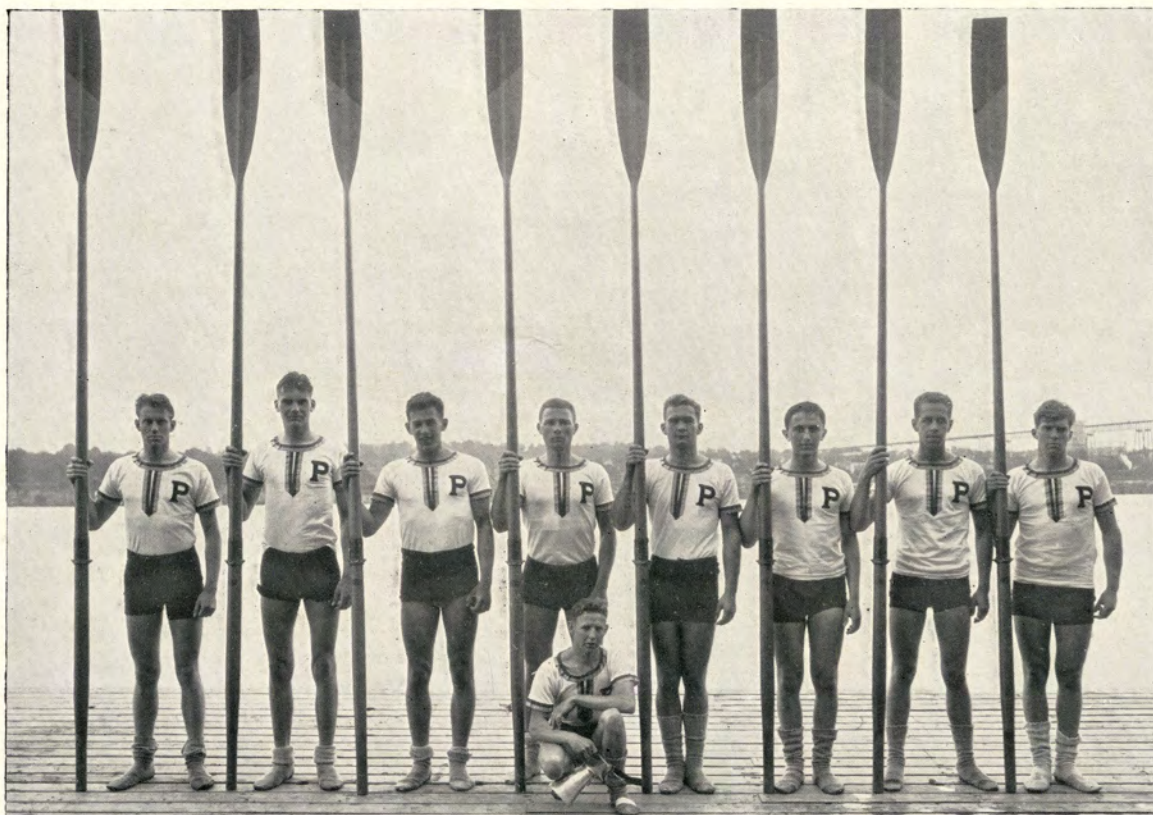
JUNIOR VARSITY

Position	Name	Age	Height	Weight
Bow	Smith, E. M.	22	6'	176
No. 2	Lepage, W. R.	19	6' 3"	181
No. 3	Shallerross, J. R.	21	6' ½"	180
No. 4	Otto, L. L.	20	6' 4"	190
No. 5	Falk, B. L.	21	6' 3"	191
No. 6	Hartman, L. F.	20	6' 3"	180
No. 7	Boyce, J. B.	20	6' 4"	185
Str.	Vanneman, W. M.	22	6' 1"	184
Average		20½	6' 2¼"	183¼
Cox.	Mullestein, W. E.	19	5' 5"	110

FRESHMAN

Position	Name	Age	Height	Weight
Bow	Hooper, W. D.	18	6' 2"	180
No. 2	Thompson, R. R.	18	6' 1"	170
No. 3	Blum, B.	19	6' 3"	181
No. 4	Schroeder, F. J.	18	6' 3"	180
No. 5	Williams, D.	19	6' 4"	186
No. 6	Garber, F. W.	19	6' 5"	186
No. 7	Miller, M. G.	19	5' 11"	174
Str.	Payne, B. S.	19	6'	171
Average		18½	6' 2"	172½
Cox.	Eliasberg, H.	17	5' 6"	99
Subs.	Pond, D. S.	18	6' 1"	170
	Fleischman, E. P.	18	6' 2"	177

PENNSYLVANIA

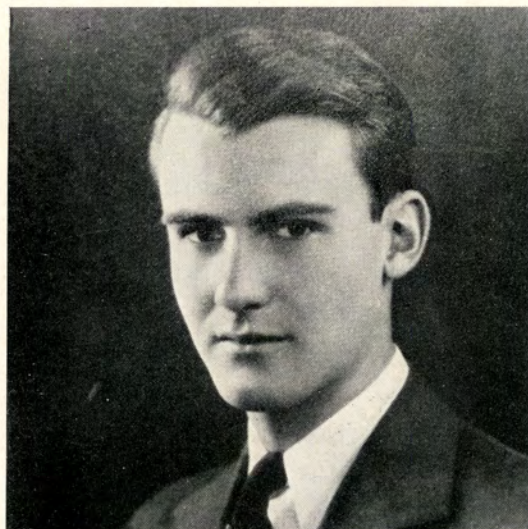


1931 'VARSITY

Position	Name	Age	Height	Weight
Bow	Cadwalader, John	21	6'	172
No. 2	Taylor, James D., Jr.	20	6' 3"	170
No. 3	Schwartz, Louis	18	6'	175
No. 4	Barnhart, Dickson	23	6' 1"	172
No. 5	Sebastian, Paul	19	6'	178
No. 6	Jordan, J. Richard	19	6' 1"	177
No. 7	Grote, Charles H.	20	6' 3"	175
Str.	Anderson, James B.	23	6' 2"	165
Average		20½	6' 1¼"	173
Cox.	Loveless, George	20	5' 6"	118
Subs.	Lambert, Thomas	22	6' 2"	188
	Barnbridge, Jack	18	6' 2"	175
	Weeks, Wm. C.	19	6' 1"	172

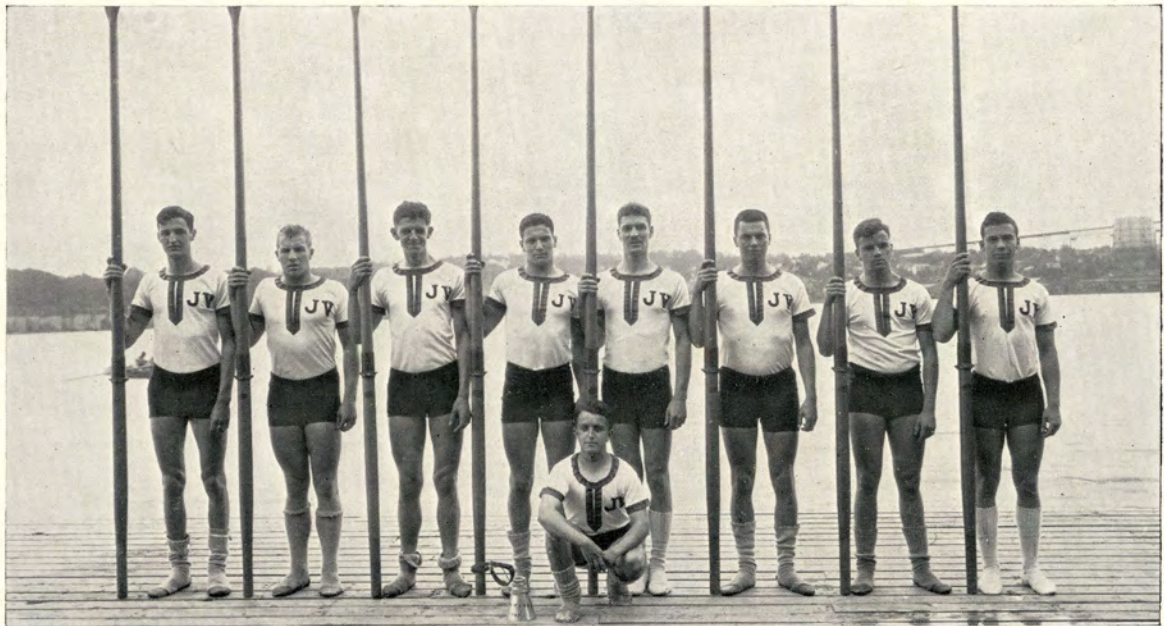


DICKSON BARNHART, *Captain*



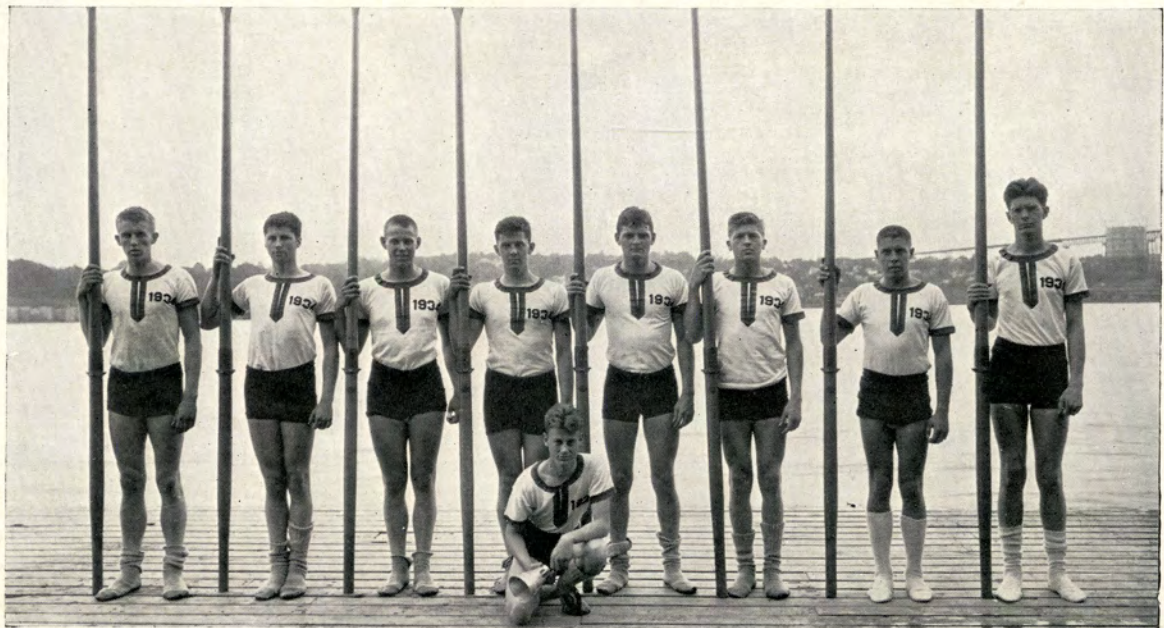
CHARLES HENDERSON, JR., *Manager*

PENNSYLVANIA



© Fred A. Smith

JUNIOR VARSITY



© Fred A. Smith

FRESHMAN CREW

JUNIOR VARSITY				
Position	Name	Age	Height	Weight
Bow	Eustis, John N.	19	6'	170
No. 2	Davis, Harry	20	6'	168
No. 3	Curtis, Guy	20	6' 1"	177
No. 4	Palmer, Frederick	23	6' 2"	174
No. 5	Elgar, Alfred F.	20	6'	180
No. 6	Roth, F.	19	6' 3"	172
No. 7	Ruff, Edward J.	20	6' 1"	173
Str.	Martin, John K.	22	6' 4"	170
Average		20½	6' 1½"	173½
Cox.	Mahaney, John K.	19	5' 2"	118
Subs.	Johnson, Wm.	20	6'	170
	Laskey, Wm. M.	19	6' 1"	165
	Ware, Willard	21	5' 6¾"	119
	Miller, Richard C.	18	5' 7"	115

FRESHMAN				
Position	Name	Age	Height	Weight
Bow	Melhinch, Seth L.	20	6' 5"	167
No. 2	Walter, Chas. A., Jr.	18	5' 10"	162
No. 3	Kennedy, Edward	18	6' 1"	168
No. 4	Penniman, Wm. F.	18	6' 2"	165
No. 5	Gage, Duncan	18	6'	172
No. 6	Hopkinson, Edw., 3rd	18	6' 2"	180
No. 7	Sewell, Robert, Jr.	19	6' 1"	167
Str.	Martin, Willard S.	19	6' 3"	172
Average		18½	6' 1½"	169
Cox.	Bol on, Roscoe A.	18	5' 5"	118
Subs.	Hannen, Allen	18	6' 1"	170
	Bried, James M.	18	5' 10"	162
	Somerville, Irwin	19	6' 2"	170
	Burk, Joseph	18	6' 2"	172
	Phelps, Sydney R., 3rd	20	5' 7"	116

SYRACUSE



1931 VARSITY

Position	Name	Age	Height	Weight
Bow	Wetherell, William	25	5' 7"	140
No. 2	Ashcroft, Sterling	23	6' 1"	171
No. 3	Abrams, Prentice	24	6' 1"	172
No. 4	Keefe, Webster	21	6' 1"	170
No. 5	Jones, Rollin	22	6' ½"	173
No. 6	Kratina, George	21	6'	170
No. 7	Easter, Theodore	22	6' 3"	175
Str.	Weiler, Milton	21	6' 1"	171
Average		22¼	6' ½"	167¾
Cox.	McKaig, Murray	22	5' 6"	120
Subs.	Vesely, Vincent	23	6' 1"	180
	Doscher, Fabian	19	6' 3"	182
	Fegel, Arthur	20	6' 3"	191
	Schmerhorn, John	18	6' 2"	173



FRED CHESTER, *Captain*



NORMAN C. BRUST, *Manager*

SYRACUSE



JUNIOR 'VARSITY



FRESHMAN CREW

JUNIOR 'VARSITY				
Position	Name	Age	Height	Weight
Bow	Gower, Byron	22	5' 8½"	170
No. 2	Hopkins, Harlow	21	6' 2"	174
No. 3	Smart, Wayne	22	6'	163
No. 4	Chester, Frederick	21	6' 3"	180
No. 5	Buff, Ernest	22	6'	180
No. 6	Johnson, Robert	19	6' 3"	195
No. 7	McKean, Herbert	19	6'	170
Str.	Lombardi, Thomas	20	6' 2½"	195
	Average	20¾	6' ¾"	178½
Cox.	Trnavsky, Benny	22	5' 5"	120
Subs.	Meacham, Edward D.	19	6'	148
	Spieker, Francis	20	6'	170
	Wissner, Benjamin	21	6' 1"	185
	Donaldson, Harold	24	6' 1"	145

FRESHMAN				
Position	Name	Age	Height	Weight
Bow	Puls, Irving	18	5' 10"	160
No. 2	Gramlich, Jacob E.	18	6' 1"	175
No. 3	Northrup, Leverne	19	6' 3"	167
No. 4	Allen, Harry Bemis	19	6' 1"	172
No. 5	Schoeberlin, G. A., Jr.	18	6' 3"	165
No. 6	Swanson, Russel S.	19	6' 3"	158
No. 7	Willoughby, Earle	18	6' 1"	163
Str.	Seigfried, DeFois H.	18	6' 4"	195
	Average	18¾	6' 1¾"	169½
Cox.	Havill, Robert	18	5' 6"	117

U. S. NAVAL ACADEMY

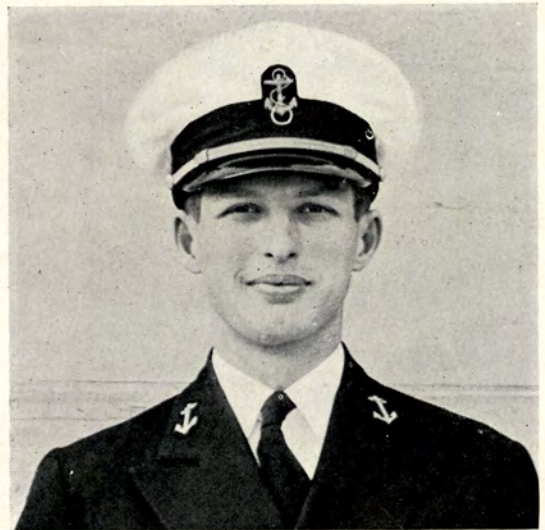


1931 'VARSITY

Position	Name	Age	Height	Weight
Bow	Gray, A. D.	21	6' 2"	180
No. 2	Jewett, G. W.	22	6' 2"	180
No. 3	Shelton, H. E.	21	6' 1"	190
No. 4	Crinkley, F. D.	23	6' 3"	192
No. 5	Steffanides, E. F.	23	6' 2"	180
No. 6	Anderson, H. W.	19	6' 2"	192
No. 7	Schoeni, W. P.	23	6' 2"	180
Str.	Hunter, R. P.	22	6'	175
Average		21 $\frac{3}{4}$	6' 1 $\frac{3}{4}$ "	183 $\frac{1}{2}$
Cox.	Fulton, R. B.	20	5' 7"	120
Subs.	Phillips, J. L.	21	6' 2"	190
	McFarlane, D. J.	22	6' 2"	178



W. P. SCHOENI, *Captain*

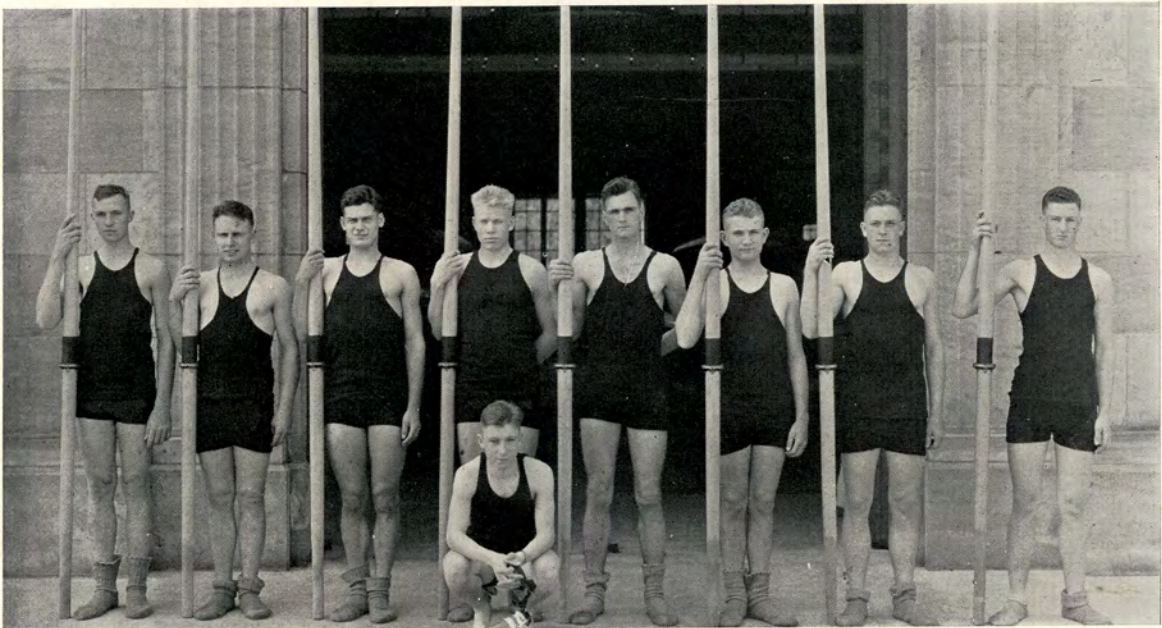


M. W. HIBSCHMAN, *Manager*

U. S. NAVAL ACADEMY



JUNIOR 'VARSITY



PLEBE CREW

JUNIOR 'VARSITY				
Position	Name	Age	Height	Weight
Bow	Weeks, J. B.	18	6' 3"	178
No. 2	Murphy, J. E.	21	6' 3"	172
No. 3	Wendt, W. F. A.	19	6' 2"	180
No. 4	White, C. M.	21	6'	174
No. 5	Quirk, P. D.	21	6'	178
No. 6	Monroe, H. S.	21	6' 2"	170
No. 7	Owens, S. D.	21	6' 2"	170
Str.	Burdick, D. G.	21	6' 1"	178
Average		20½	6' 1½"	175
Cox.	Brannon, H. R.	22	5' 5"	120
Subs.	Dillon, J. R.	20	6' 1"	166
	Espenas, A. K.	21	6' 1"	179

PLEBE CREW				
Position	Name	Age	Height	Weight
Bow	Wilson, J. M.	19	5' 11"	169
No. 2	Smith, J. V.	18	5' 11"	174
No. 3	Coffin, A. P.	18	5' 11"	174
No. 4	Shilson, J. S.	20	6' 1"	172
No. 5	McGill, W. N.	19	6'	174
No. 6	Stone, A., Jr.	20	6' 1"	176
No. 7	McMahon, J. M.	18	5' 11"	175
Str.	Criswell, R. P.	20	6' 1"	174
Average		19	5' 11¾"	173½
Cox.	Krulak, V. H.	18	5' 4"	120
Subs.	Brockett, W. A.	17	5' 11"	164
	Woods, M. W.	19	6' 2"	178

CALIFORNIA



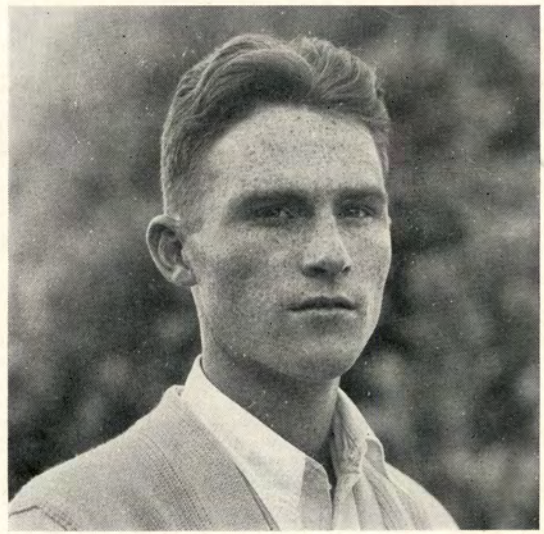
© M. L. Cohen

1931 'VARSITY

<i>Position</i>	<i>Name</i>	<i>Age</i>	<i>Height</i>	<i>Weight</i>
Bow	Granger, Harvey	21	6' 1¼"	179
No. 2	Jastram, Burton	21	5' 11¼"	188
No. 3	Holman, Herman	21	6' 4"	186
No. 4	Duguid, Spencer	19	6' 2½"	183
No. 5	Dunlap, David	20	6' 2¾"	188
No. 6	Gregg, Duncan	21	6' 4"	179
No. 7	Woodward, William	22	6' ½"	182
Str.	Rhein, Reginald	20	6' 2"	183
Average		20½	6' 2"	183½
Cox.	Graham, Norris	24	5' 5½"	122



NORRIS GRAHAM, *Coxswain*



FREDERICK D. WITZEL, *Manager*

CALIFORNIA

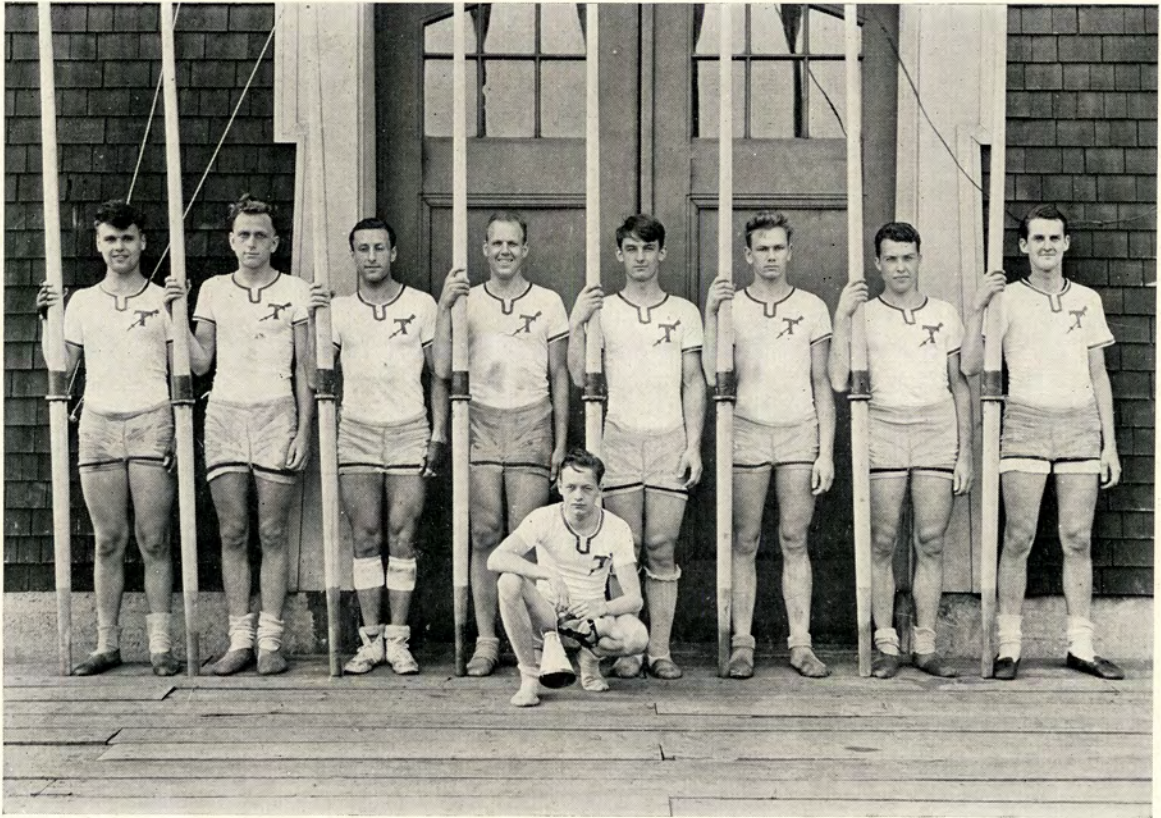


© M. L. Cohen

JUNIOR 'VARSITY

<i>Position</i>	<i>Name</i>	<i>Age</i>	<i>Height</i>	<i>Weight</i>
Bow	Rogers, Glenn	19	6' ¾"	162
No. 2	Gage, Henry	21	5' 11¾"	176
No. 3	Pope, W. Lee	22	6' 2"	170
No. 4	Tower, Harold	19	6' 1½"	175
No. 5	Irwin, John	22	6' 2½"	188
No. 6	Hudgins, William	21	6' 1¾"	167
No. 7	Pederson, Carl	21	6' 1"	187
Str.	Salisbury, Edwin	20	6' 1¾"	167
Average		20½	6' 1½"	174
Cox.	Montgomery, Julian	22	5' 2½"	120

MASSACHUSETTS INSTITUTE OF TECHNOLOGY



1931 VARSITY

Position	Name	Age	Height	Weight
Bow	MacLeod, Bertram H.	22	6' 1½"	175
No. 2	Binner, C. Randolph	22	6'	170
No. 3	Miller, Charles	22	6'	179
No. 4	Valentine, Richard H.	19	6'	183
No. 5	Bennett, Richard V.	23	6' 1"	190
No. 6	Evans, Louis P.	22	6'	178
No. 7	Glenn, Roland	19	6' 2"	175
Str.	Richardson, Howard L. ...	21	6' 2"	195
Average		21¼	6' ¾"	180½
Cox.	Dunlap, James M.	21	5' 6"	105
Subs.	Hapgood, Cyrus E.	19	6' 1"	168
	Pleasants, William	20	6' 4"	175
	MacMahon, Frank K.	19	5' 6"	115

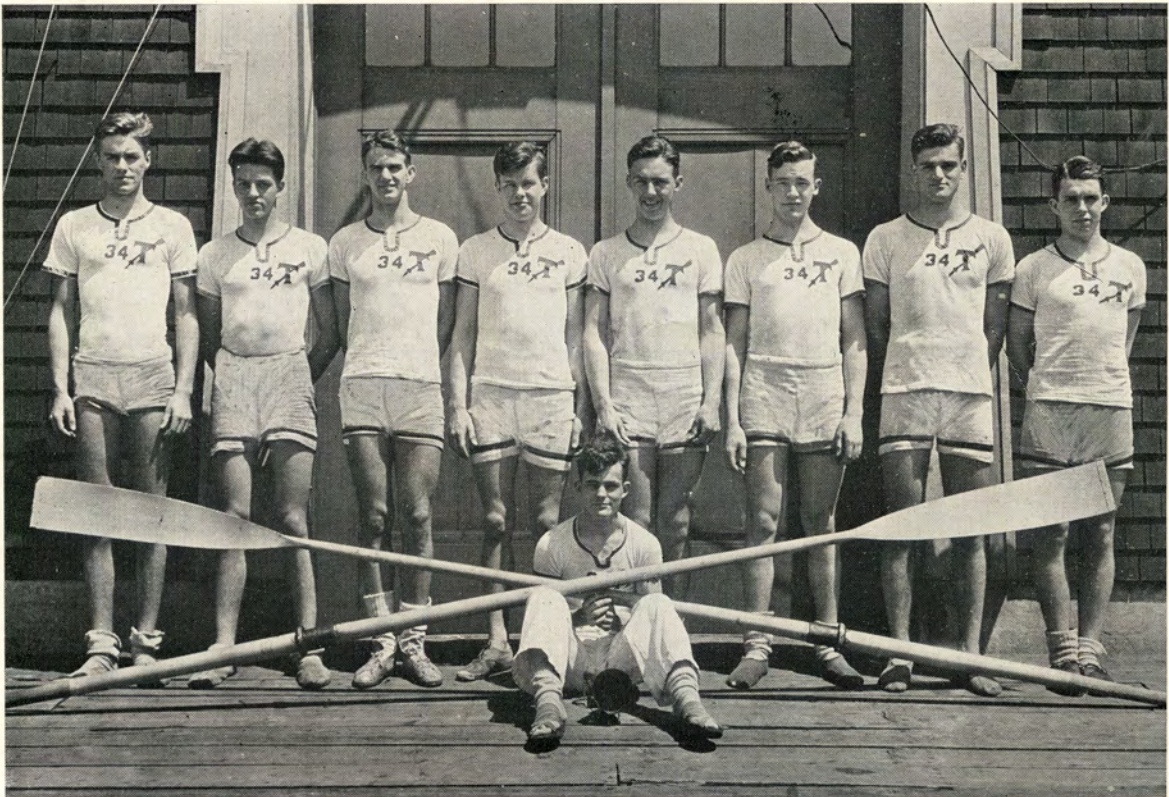


BERTRAM H. MACLEOD, *Captain*



THOMAS B. RHINES, *Manager*

MASSACHUSETTS INSTITUTE OF TECHNOLOGY



FRESHMAN CREW

<i>Position</i>	<i>Name</i>	<i>Age</i>	<i>Height</i>	<i>Weight</i>
Bow	Wing, Paul	18	6' 4"	168
No. 2	Woodbury, Willard D.	17	6'	160
No. 3	Murdoch, Reginald	18	6' 1"	170
No. 4	Jerome, Charles W.	19	6' 1"	170
No. 5	Lucke, Charles	19	6' 2"	180
No. 6	Mowatt, Allan	18	6' 2"	174
No. 7	Loewenstein, Edward	18	6' 2½"	180
Str.	Westfall, John W.	18	5' 9½"	164
	Average	18	6' 1¼"	170¾
Cox.	Humphreys, Henry D.	19	5' 5½"	118
Subs.	Nashner, Sydney	18	6' 2"	178
	Bromley, Edward P.	19	6' 3"	168

WASHINGTON



1931 'VARSITY

Position	Name	Age	Height	Weight
Bow	Schmidt, Henry E.	20	6' 2½"	170
No. 2	Williamson, Don M.	20	6' 2"	170
No. 3	Mjorud, Herbert	20	6' 2"	175
No. 4	Morris, Don	23	6' 2½"	176
No. 5	Phillips, Alton V.	28	6' 3"	185
No. 6	Bowen, Gilbert T.	22	6' 4½"	170
No. 7	Parrott, Gordon	19	6' 1"	182
Str.	Ginger, John	21	6' 2"	170
Average		21½	6' 2½"	174¾
Cox.	Harris, Richard B.	21	5' 5"	115
Subs.	Schoel, Loren W.	20	6' 2½"	185
	Murphy, Bruce	20	6' 2"	168
	Wilson, Greg T.	23	6'	165
	Reese, Karl B.	21	6' 6"	190

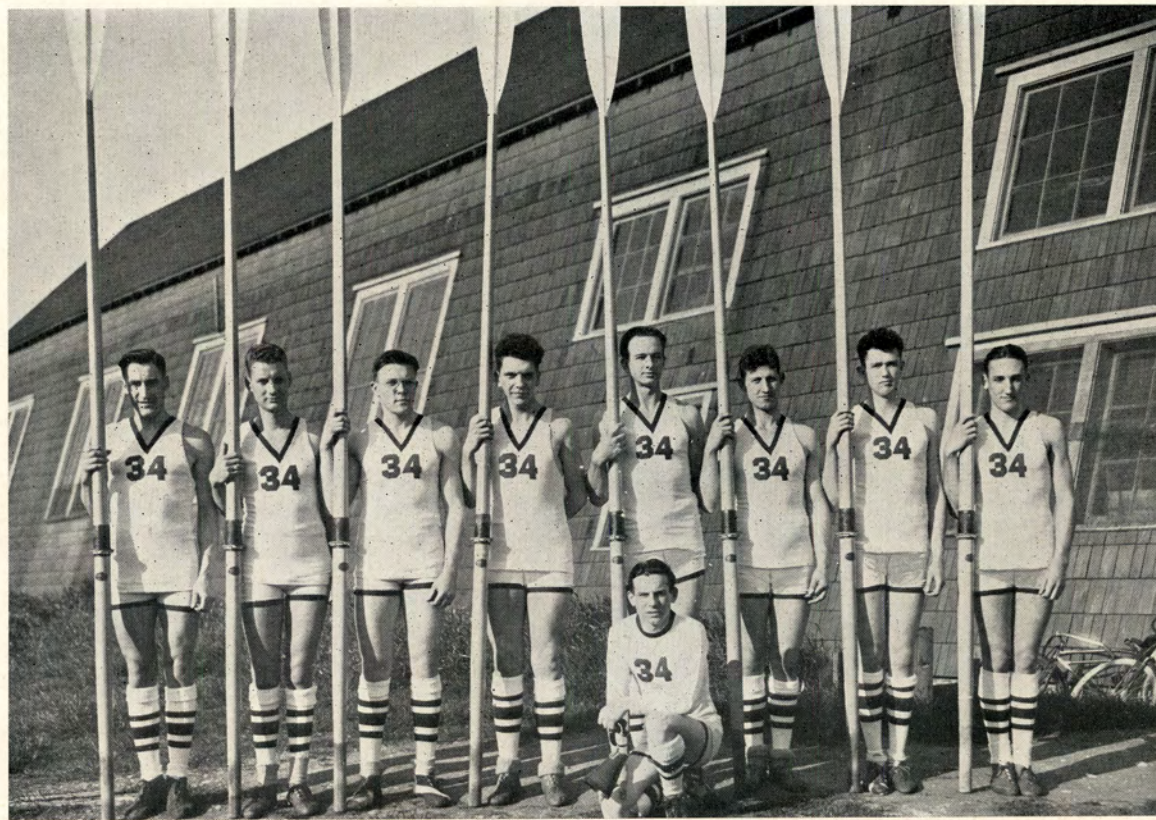


RICHARD B. HARRIS, *Captain*



CHARLES PARKER, *Manager*

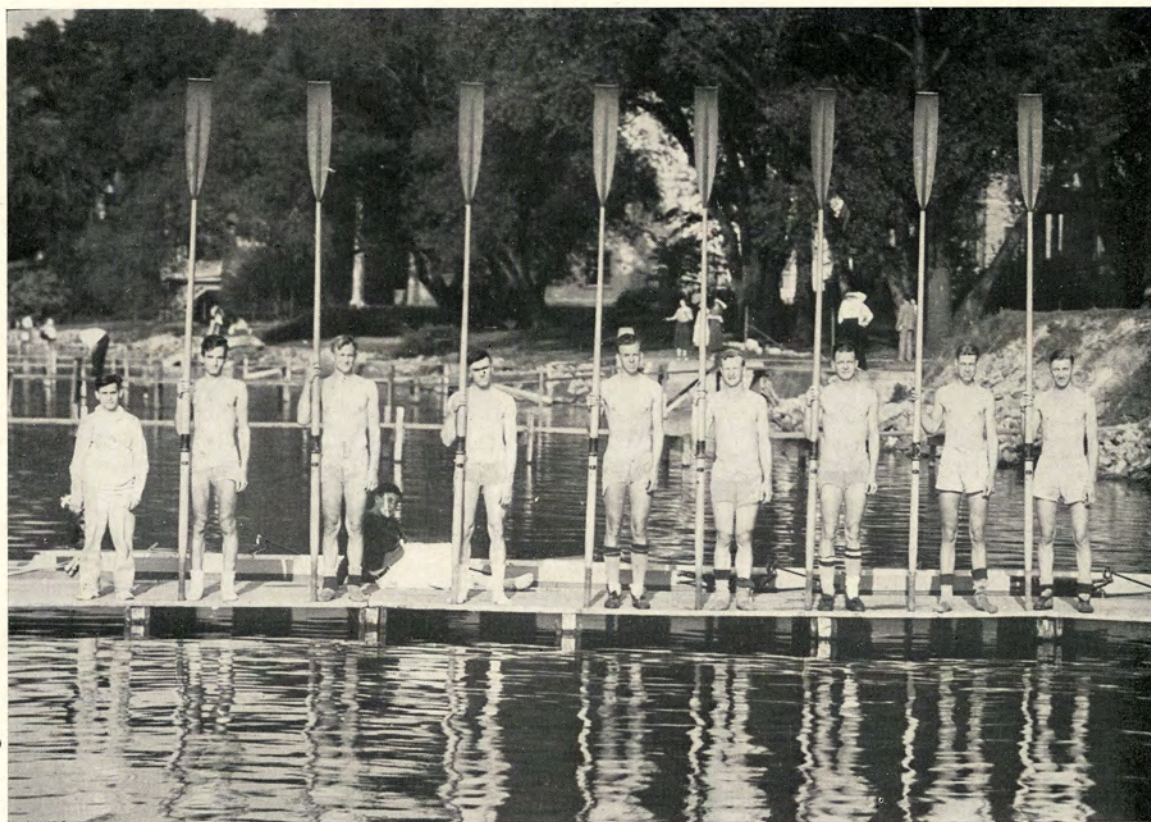
WASHINGTON



FRESHMAN CREW

<i>Position</i>	<i>Name</i>	<i>Age</i>	<i>Height</i>	<i>Weight</i>
Bow	Postnikoff, Vsevolod	29	6' 1"	168
No. 2	Jensen, Harold B.	18	6' 1"	173
No. 3	Day, Herbert W.	19	6' 1"	174
No. 4	Fisher, Harry S.	18	6' 2"	175
No. 5	Edmundson, Clarence D. ..	19	6' 4"	180
No. 6	Lewis, Peter	20	6' 1"	181
No. 7	McCarthy, Joseph L.	17	6' 3"	175
Str.	Argersinger, Edward M. ..	18	6' 2"	172
Average		19 $\frac{3}{4}$	6' 1 $\frac{3}{4}$ "	174 $\frac{3}{4}$
Cox.	Anderson, Glenn	19	5' 7"	121
Subs.	Storey, John C.	19	6' 1 $\frac{1}{2}$ "	165
	Peterson, Harry	21	6' 1 $\frac{1}{2}$ "	174

WISCONSIN



1931 'VARSITY

<i>Position</i>	<i>Name</i>	<i>Age</i>	<i>Height</i>	<i>Weight</i>
Bow	Tessendorf, Charle	22	6' 2"	171
No. 2	Silbernagel, Herman	19	6' 2"	170
No. 3	Dutton, Orville	21	6' 1"	175
No. 4	Inde, Aaron	21	6'	178
No. 5	Smedal, Harold	19	6' 4"	188
No. 6	Oberdeck, Louis	22	6'	175
No. 7	Zabel, Harold	23	6' 3"	188
Str.	Woodward, Clifford	22	6' 1"	173
Average		21	6' 1½"	177¼
Cox.	Miller, George	24	5' 4"	116
Subs.	Hovey, William	22	6' 2"	172
	Lumpkin, William	21	6' 1"	170



LOUIS OBERDECK, *Captain*



JOHN ZERATSKY, *Commodore*

RECORD OF PREVIOUS RACES

FRESHMAN EIGHTS—TWO MILES

DATE	TIME	1ST	2ND	3RD	4TH	5TH	6TH	7TH	8TH
June 24, 1896	10 m 18 s	Cornell	Harvard	Pennsylvania	Columbia				
June 23, 1897	9 m 19 1/2 s	Yale	Harvard	Cornell					
June 30, 1897	9 m 21 1/5 s	Cornell	Columbia	Pennsylvania					
July 2, 1898 ¹	10 m 57 3/5 s	Cornell	Columbia	Pennsylvania					
June 26, 1899	9 m 55 s	Cornell	Columbia	Pennsylvania					
June 30, 1900	9 m 45 2/5 s	Wisconsin	Pennsylvania	Cornell	Columbia				
July 2, 1901	10 m 20 1/5 s	Pennsylvania	Cornell	Columbia	Syracuse				
June 21, 1902	9 m 39 4/5 s	Cornell	Wisconsin	Columbia	Syracuse	Pennsylvania			
June 26, 1903	9 m 18 s	Cornell	Syracuse	Wisconsin	Columbia	Pennsylvania			
June 28, 1904	10 m 1 s	Syracuse	Cornell	Pennsylvania	Columbia				
June 28, 1905	9 m 39 4/5 s	Cornell	Syracuse	Columbia	Pennsylvania				
June 23, 1906	9 m 51 3/5 s	Syracuse	Cornell	Wisconsin	Columbia	Pennsylvania			
June 26, 1907	9 m 58 s	Wisconsin	Syracuse	Pennsylvania	Columbia	Cornell			
June 27, 1908	9 m 29 3/5 s	Cornell	Syracuse	Columbia	Wisconsin	Pennsylvania			
July 2, 1909	9 m 11 3/5 s	Cornell	Syracuse	Pennsylvania	Wisconsin	Columbia			
June 25, 1910	10 m 40 1/5 s	Cornell	Columbia	Syracuse	Pennsylvania	Wisconsin			
June 27, 1911	10 m 13 1/5 s	Columbia	Cornell	Syracuse	Pennsylvania	Wisconsin			
June 29, 1912	9 m 31 2/5 s	Wisconsin	Wisconsin	Syracuse	Pennsylvania	Columbia			
June 21, 1913	10 m 4 4/5 s	Cornell	Wisconsin	Syracuse	Pennsylvania	Columbia			
June 26, 1914	10 m 26 s	Cornell	Syracuse	Pennsylvania	Wisconsin	Columbia			
June 28, 1915	9 m 29 3/5 s	Syracuse	Cornell	Columbia	Pennsylvania				
June 19, 1916	11 m 5 4/5 s	Cornell	Syracuse	Pennsylvania	Columbia				
June 19, 1920 ²	10 m 45 2/5 s	Cornell	Syracuse	Pennsylvania	Columbia				
June 22, 1921	10 m 32 s	Cornell	Syracuse	Pennsylvania	Columbia				
June 26, 1922	9 m 20 1/5 s	Syracuse	Cornell	Columbia	Pennsylvania				
June 28, 1923	9 m 27 4/5 s	Cornell	Washington	Syracuse	Pennsylvania	Columbia			
June 17, 1924	10 m 22 3/5 s	Pennsylvania	Cornell	Syracuse	Columbia	Wisconsin			
June 22, 1925	9 m 59 s	Syracuse	Pennsylvania	Columbia	Cornell	Wisconsin			
June 28, 1926	11 m 28 3/5 s	Columbia	California	Syracuse	Pennsylvania	Cornell	California	Wisconsin	
June 29, 1927	9 m 45 s	Navy	Syracuse	Columbia	Cornell	Pennsylvania	Columbia	California	
June 19, 1928	9 m 42 s	Navy	Cornell	Syracuse	Washington	Pennsylvania	Columbia	California	
June 24, 1929	10 m 23 3/5 s	Syracuse	California	Cornell	Navy	Columbia	M.I.T.	Pennsylvania	
June 26, 1930	11 m 18 1/5 s	Syracuse	Cornell	Columbia	Pennsylvania	Washington	Navy	California	M.I.T.

JUNIOR VARSITY EIGHTS—TWO MILES

June 26, 1914	11 m 15 3/5 s	Cornell	Columbia	Pennsylvania	Syracuse				
June 28, 1915	10 m 1/5 s	Cornell	Pennsylvania	Columbia					
June 17, 1916	11 m 15 2/5 s	Syracuse	Cornell	Columbia	Pennsylvania				
June 19, 1920 ²	10 m 45 3/5 s	Cornell	Syracuse	Pennsylvania	Columbia				
June 22, 1921	10 m 38 s	Cornell	Pennsylvania	Syracuse	Columbia				
June 26, 1922	9 m 4/5 s	Cornell	Columbia	Syracuse	Pennsylvania	Penn 150-lb.			
June 28, 1923	9 m 50 s	Syracuse	Cornell	Columbia	Pennsylvania				
June 17, 1924	10 m 36 2/5 s	Pennsylvania	Washington	Columbia	Syracuse	Cornell			
June 22, 1925	10 m 26 s	Washington	Cornell	Pennsylvania	Syracuse	Columbia			

JUNIOR VARSITY EIGHTS—THREE MILES

June 28, 1926	15 m 40 1/5 s	Washington	Pennsylvania	California	Syracuse	Cornell	Columbia		
June 29, 1927	15 m 12 4/5 s	Washington	Columbia	California	Pennsylvania	Cornell			
June 19, 1928	14 m 18 1/5 s	Navy	Cornell	Syracuse	Washington	Columbia	Pennsylvania		
June 24, 1929	15 m 21 1/5 s	Cornell	Columbia	Navy	Washington	Syracuse	Pennsylvania		
June 26, 1930	16 m 39 s	Cornell	Washington	Columbia	Syracuse	Pennsylvania	Navy		

UNIVERSITY EIGHTS—FOUR MILES

June 24, 1895	21 m 25 s	Columbia	Cornell	Pennsylvania					
June 26, 1896	19 m 59 s	Cornell	Harvard	Pennsylvania	Columbia				
June 25, 1897	20 m 34 s	Cornell	Yale	Harvard					
July 2, 1897	20 m 47 4/5 s	Cornell	Columbia	Pennsylvania					
July 2, 1898 ³	15 m 51 1/2 s	Pennsylvania	Cornell	Wisconsin	Columbia				
June 27, 1899	20 m 4 s	Pennsylvania	Wisconsin	Cornell	Columbia				
June 30, 1900	19 m 44 3/5 s	Pennsylvania	Wisconsin	Cornell	Columbia	Georgetown			
July 2, 1901	18 m 53 1/5 s	Cornell	Columbia	Wisconsin	Georgetown	Syracuse	Pennsylvania		
June 21, 1902	19 m 5 3/5 s	Cornell	Wisconsin	Columbia	Pennsylvania	Syracuse	Georgetown	Wisconsin	
June 26, 1903	18 m 57 s	Cornell	Georgetown	Wisconsin	Pennsylvania	Syracuse	Columbia	Wisconsin	
June 28, 1904	20 m 22 3/5 s	Syracuse	Cornell	Pennsylvania	Columbia	Georgetown	Wisconsin		
June 28, 1905	20 m 29 s	Cornell	Syracuse	Georgetown	Columbia	Pennsylvania	Wisconsin		
June 23, 1906	19 m 36 4/5 s	Cornell	Pennsylvania	Syracuse	Wisconsin	Columbia	Georgetown		
June 26, 1907	20 m 2 2/5 s	Cornell	Columbia	Navy	Pennsylvania	Wisconsin	Georgetown	Syracuse	
June 27, 1908	19 m 24 1/5 s	Syracuse	Columbia	Cornell	Pennsylvania	Wisconsin			
July 2, 1909	19 m 2 s	Cornell	Columbia	Syracuse	Wisconsin	Pennsylvania			
June 25, 1910	20 m 42 1/5 s	Cornell	Pennsylvania	Columbia	Syracuse	Wisconsin			
June 27, 1911	20 m 10 4/5 s	Cornell	Columbia	Pennsylvania	Wisconsin	Syracuse			
June 29, 1912	19 m 31 2/5 s	Cornell	Wisconsin	Columbia	Syracuse	Pennsylvania	L. Stanford		
June 21, 1913	19 m 28 3/5 s	Syracuse	Cornell	Washington	Wisconsin	Columbia	Pennsylvania		
June 26, 1914	19 m 37 4/5 s	Columbia	Pennsylvania	Cornell	Syracuse	Washington	Wisconsin		
June 28, 1915	19 m 36 3/5 s	Cornell	L. Stanford	Syracuse	Columbia	Pennsylvania			
June 17, 1916	20 m 15 2/5 s	Syracuse	Cornell	Columbia	Pennsylvania				
June 19, 1920	11 m 2 3/5 s	Syracuse	Cornell	Columbia	Pennsylvania				
June 22, 1921 ⁴	14 m 7 s	Navy	California	Cornell	Pennsylvania	Syracuse	Columbia		
June 26, 1922 ⁵	13 m 33 3/5 s	Navy	Washington	Syracuse	Cornell	Pennsylvania	Wisconsin		
June 28, 1923 ⁶	14 m 3 1/5 s	Washington	Navy	Columbia	Syracuse	Cornell	Pennsylvania		
June 17, 1924 ⁷	15 m 2 s	Washington	Wisconsin	Cornell	Pennsylvania	Syracuse	Columbia		
June 22, 1925	19 m 24 4/5 s	Navy	Washington	Wisconsin	Pennsylvania	Cornell	Syracuse	Columbia	
June 28, 1926	19 m 28 3/5 s	Washington	Navy	Syracuse	Pennsylvania	Columbia	Syracuse	Columbia	
June 29, 1927	20 m 57 s	Columbia	Washington	California	Navy	Cornell	Syracuse	Pennsylvania	Cornell
June 19, 1928	18 m 35 4/5 s	California	Columbia	Washington	Cornell	Navy	Syracuse	Pennsylvania	
June 24, 1929 ⁸	22 m 58 s	Columbia	Washington	Pennsylvania	Navy	Wisconsin			
June 26, 1930 ⁹	21 m 42 s	Cornell	Syracuse	M. I. T.	California	Columbia	Washington	Pennsylvania	Wisconsin

¹ On Saratoga Lake, N. Y.
² On Lake Cayuga, N. Y.

³ On Saratoga Lake, N. Y. Three miles.
⁴ On Lake Cayuga, N. Y. Two miles.
⁵ Three miles.

⁶ Mass. Inst. of Technology, Syracuse, California and Cornell swamped in that order.
⁷ Navy swamped.

NELSON HOUSE

POUGHKEEPSIE, N. Y.

Poughkeepsie's Leading Hotel

—
New Fireproof Addition
European Plan
175 Rooms 125 Baths

—
Popular Price Coffee and
Lunch Room

—
A. A. A. Information
Bureau

—
Fireproof Ramp Garage
On the Premises

E. P. COUGHLAN, Prop.

*A Perfect Food
in Perfect
Form*



SCHRAUTH'S ICE CREAM



*"Every Flavor Meets With
Favor"*

SINCE 1866

Poughkeepsie's New

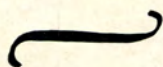
HOTEL CAMPBELL

*The only fireproof hotel
in the city*

110 Rooms 110 Baths

The BANKS of POUGHKEEPSIE

offer helpful banking service



FALLKILL NATIONAL BANK & TRUST COMPANY
FARMERS AND MANUFACTURERS NATIONAL BANK
FIRST NATIONAL BANK
MERCHANTS NATIONAL BANK & TRUST COMPANY
POUGHKEEPSIE SAVINGS BANK
POUGHKEEPSIE TRUST COMPANY

Keep FRESH Cigarettes with you . . . afloat or ashore

No matter how far you cruise from the home port, the cool clean throat-easy flavor of fresh tobacco is always yours, simply by opening the Humidor Pack.

The same air-sealed Cellophane package which keeps in the natural moisture keeps out the salt air dampness.

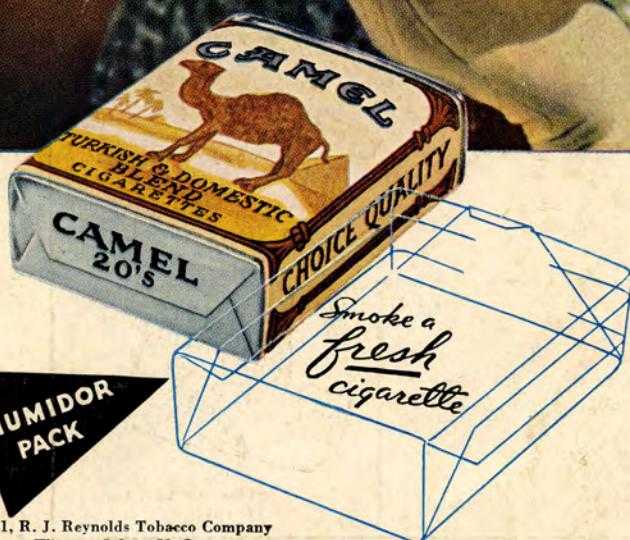
Keeps out water, too, if the quick slap of a wave treats you to a ducking.

Men and women alike are finding new enjoyment in Camels. They are tasting the full delight of fine Turkish and mellow Domestic tobaccos—kept fresh, free from dust and germs, by the Humidor Pack.

If you haven't switched to Camels—break away from the burning irritation of the smoke from dried tobacco for one day—and then go back—if you can.



Smoke a fresh cigarette



**HUMIDOR
PACK**

● It is the mark of a considerate hostess, by means of the Humidor Pack, to "Serve a fresh cigarette." Buy Camels by the carton — this cigarette will remain fresh in your home and office

© 1931, R. J. Reynolds Tobacco Company
Winston-Salem, N. C.

CAMELS