

# POUGHKEEPSIE REGATTA :: 1928



EDGAR  
VOLKE

OFFICIAL PROGRAM  
PRICE THIRTY-FIVE CENTS



## SOUTH AMERICA

A glorious, calm voyage to famous, fascinating cities; Romantic Rio de Janeiro, most beautiful capital in the world; Montevideo—City of Roses; Gay Buenos Aires, Paris of the Western World.

The seasons are reversed and South America is now enjoying cool, sub-tropical climate. Magnificent scenery—luxurious hotels.

### STUDENT TOURS

*Send for information on tourist third cabin, student all-expense tours and South American summer schools.*

*Palatial 21,000 ton liners sail fortnightly from New York*

SS. AMERICAN LEGION  
SS. SOUTHERN CROSS


SS. PAN AMERICA  
SS. WESTERN WORLD

*Fastest Time*

*Finest Ships*

## MUNSON STEAMSHIP LINES

*General Offices: Munson Building  
67 Wall Street, New York City*



Imported Rodier fabric  
in modern design fash-  
ions blouse of two piece  
sports frock. Skirt of  
silk crepe. 35.00

## Stewart's Sports Fashions Are The Winning Fashions!

**B**ECAUSE it's as important to dress  
the game correctly..as to play it well  
..sports enthusiasts come to Stewart's for  
the impeccable togs they'll need for  
riding..for golf..for tennis..and every  
other game a summer of sports promises.

SPORTS SHOP—Second Floor

**Stewart & Co.**  
fifth avenue at 37th street

# Reserve Power Wins!



THE crew that will win the race today is the one that has the greatest reserve of power for the final spurt.

The man who wins in the financial race is the one who has stored up money to fall back upon.

College men of New York and vicinity are invited to use the facilities of the United States Mortgage and Trust Company. Build up your cash reserve here and use our advice and service in connection with your investments.

## United States Mortgage & Trust Company

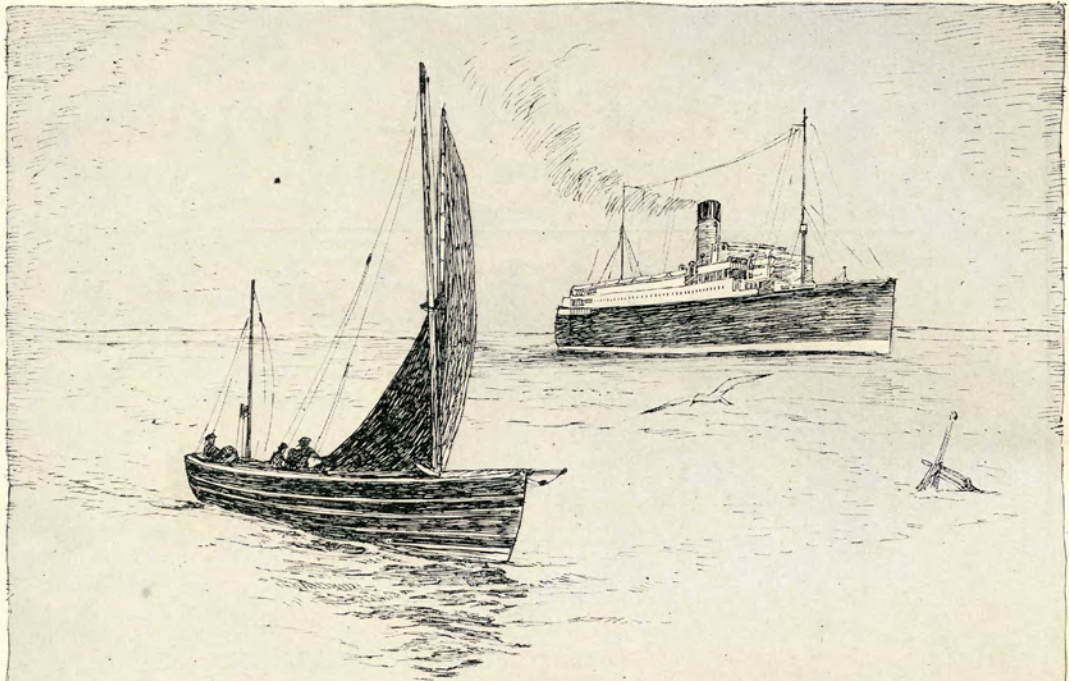
55 Cedar Street

*Other Offices*

Broadway at 73rd Street  
125th St. at 8th Avenue

Madison Ave. at 74th St.  
Lexington Ave. at 47th St.

*Capital and Surplus \$10,000,000*



TEBO Yacht Basin, behind which are the entire resources of the Todd Shipyard's Corporation, maintains an incomparable Service to owners of fine yachts in repair, reconditioning, overhaul and storage... Convenient owner supervision within fifteen minutes of lower Manhattan



TODD DRY DOCK ENGINEERING & REPAIR CORPORATION  
*Foot of 23rd Street, Brooklyn, New York*



*Official Program*



# ANNUAL REGATTA

OF THE

**Intercollegiate Rowing Association**

Incorporated 1898



*June 19th, 1928*



The members of the Association are Columbia, Cornell,  
Pennsylvania and Syracuse. California, Washing-  
ton and the U. S. Naval Academy are  
competing on invitation.

*Copyright, 1928  
by the Intercollegiate Rowing  
Association, Inc.*

---

**PUBLISHED BY THE BOARD OF STEWARDS**

ATLANTIC CITY'S  
Newest Boardwalk Hotel

500 ROOMS  
*with Sea Water Baths*

French Cuisine  
Concert Music  
Swimming Pool  
Turkish *and* Cabinet Baths

Apartments *and* Hotel Rooms  
*by the Day, Month or Year*

*Descriptive Pamphlet upon Request*

F. L. ANDREWS  
*Manager*

PRESIDENT HOTEL  
*and Apartments*

On the Beachfront *at* Albany Avenue

*BOARD OF STEWARDS*  
*Of the*  
*INTERCOLLEGIATE ROWING ASSOCIATION*



MAXWELL STEVENSON, *Chairman*  
*Columbia*



CHARLES E. TREMAN  
*Cornell*



JOHN ARTHUR BROWN  
*Pennsylvania*



© Hyatt HURLBUT W. SMITH  
*Syracuse*





IT MUST BE  
JUST THESE SHIPS

Instinctively she prefers the finest—and just as instinctively you know it. To the Rue de la Paix for her frocks and finery—nowhere else will do. Via White Star, Red Star or Atlantic Transport Line—no other ships quite meet her exacting scrutiny.

Their sophisticated atmosphere matches her sophistication. She finds impeccable service, a necessity to her well-being—a matchless cuisine offers the delectables to which she is accustomed. Efficient stewardesses take the place of her own maid.

She travels de luxe—or she travels not at all—and she may do so on the magnificent ships of the White Star, Red Star and Atlantic Transport Lines.

For complete information apply No. 1 Broadway, New York City, our offices elsewhere or authorized agents.

**WHITE STAR LINE**  
RED STAR LINE · ATLANTIC TRANSPORT LINE



INTERNATIONAL MERCANTILE MARINE COMPANY

**T**wenty-two presidents have worn Knox Hats! That includes even the economical ones.

**KNOX**  
THE HATTER

711 Fifth Avenue  
and five other stores in New York City



Spalding Suits  
with both  
trousers and  
knickers

... and yet only \$50 and \$65

Just take a peep at the sport suits we can give you. Real Scotch weaves, straight from Edinburgh. Fabrics you cannot improve on at a hundred or more. Hand sewn and trimmed. Styled to grace the country club or dignify a conference. Fitted to you as though by your pet tailor.

Many other things of interest here also: Waterproofs, shirts, shoes, ties, etc.

*A. G. Spalding & Bros.*

MEN'S SHOPS

105 Nassau St.  
(near Fulton)

N. Y.

518 Fifth Avenue  
(at 43rd)

## OFFICIALS

### Board of Stewards of the Intercollegiate Rowing Association

MAXWELL STEVENSON, *Columbia*  
CHAIRMAN

CHARLES E. TREMAN, *Cornell*  
JOHN ARTHUR BROWN, *Pennsylvania*  
HURLBUT W. SMITH, *Syracuse*

---

REYNOLDS BENSON, *Columbia*, Executive Secretary

---

#### Referee

JULIAN W. CURTISS, *Yale*

#### Assistant Referee

C. LOUIS BORIE, *Pennsylvania*

#### Chief Timer

ELLIOT FARLEY, *Harvard*

#### Assistant Timers

CHARLES M. SHEAF, *Harvard*  
DAVID M. GOODRICH, *Harvard*  
ELLIOTT H. LEE, *Princeton*

#### Chief Judge at Finish

RADCLIFFE ROMEYN, *Yale*

#### Assistant Judges

DANIEL A. NEWHALL, *Harvard*  
COLLES J. COE, *Yale*  
JAMES SHELDON, *Yale*

#### Referee's Boat

*Runabout*  
Owner, W. W. SKIDDY, *Yale*

ESTABLISHED 1818

# Brooks Brothers, CLOTHING, Gentlemen's Furnishing Goods,

MADISON AVENUE COR. FORTY-FOURTH STREET  
NEW YORK

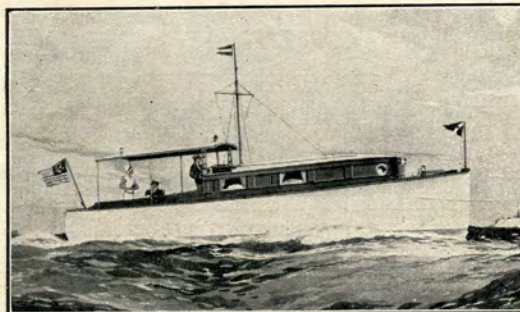
## Summer Clothes and Accessories

Send for Price List of  
SHIRTS

**BOSTON** **PALM BEACH** **NEWPORT**  
LITTLE BUILDING PLAZA BUILDING AUDRAIN BUILDING  
TREMONT COR. BOSTON COUNTY ROAD 220 BELLEVUE AVENUE



© BROOKS BROTHERS



## Completely reconditioned Elcos \$1950 and up... ready for immediate delivery

HERE'S a rare opportunity to buy an Elco cruiser at much less than even Elco's usual moderate cost. We are offering standardized Elco cruisers, completely reconditioned, priced at from \$1950 up. Models include the Twenty-Six, the Thirty-Four, the Forty-Two and the Fifty. Every boat is guaranteed by Elco to be in excellent

condition and will give long and satisfactory service. These reconditioned Elcos are ready for immediate delivery, and may be inspected now at Bayonne, N. J.

For full details, see your yacht broker or write direct to The Elco Works, 200 Ave. A, Bayonne, N. J. Models: 26 ft. . . . 34 ft. . . . 42 ft. . . . 50 ft.



All these cruisers are offered subject to prior sale. To inspect these boats, take Central R. R. of N. J. trains to West 8th St., Bayonne; 25 minutes from Liberty St., N. Y.

# The 1928 Poughkeepsie Regatta

COLUMBIA (*Light Blue and White*)  
 CORNELL (*Red and White*)  
 PENNSYLVANIA (*Red and Dark Blue*)  
 SYRACUSE (*Orange*)

CALIFORNIA (*Dark Blue and Gold*)  
 NAVY (*Blue and Gold*)  
 WASHINGTON (*Purple and Gold*)

4.00 p.m., d.l.s.

## Freshman Eight-Oared Shells

TWO MILES

TROPHY—The Stewards' Cup, presented in 1900, by Francis S. Bangs, Columbia, to be held by the winner for one year. Present holder, Navy.

RECORD—9 m., 11 $\frac{3}{4}$  s., by Cornell, July 2, 1909.

### COURSE POSITIONS

Course No. 1—Syracuse  
 Course No. 2—Navy

Course No. 3—Cornell  
 Course No. 4—Pennsylvania  
 Course No. 5—Columbia

Course No. 6—Washington  
 Course No. 7—California

### ORDER OF FINISH—

1	<i>Navy</i>	Time, 9...m.47...s.	5	<i>Pennsylvania</i>	Time, 9...m.57 $\frac{1}{2}$ ...s.
2	<i>Cornell</i>	Time, 9...m.49...s.	6	<i>Columbia</i>	Time, 9...m.58 $\frac{3}{5}$ ...s.
3	<i>Syracuse</i>	Time, 9...m.50...s.	7	<i>California</i>	Time, 10...m.05 $\frac{2}{5}$ ...s.
4	<i>Washington</i>	Time, 9...m.54 $\frac{3}{5}$ ...s.			

Water Conditions...*Very choppy*...Wind...*N.E.*

5.00 p.m., d.l.s.

## Junior Varsity Eight-Oared Shells

THREE MILES

TROPHY—The Kennedy Challenge Trophy, presented in 1899, by Davidson Kennedy, Pennsylvania, to be held by the winner for one year. Present holder, Washington.

RECORD—9 m., 45 $\frac{1}{4}$  s., by Cornell, June 26, 1922, for two-mile course.

### COURSE POSITIONS

Course No. 1—Pennsylvania  
 Course No. 2—Navy

Course No. 3—Washington  
 Course No. 4—Columbia

Course No. 5—Syracuse  
 Course No. 6—Cornell

### ORDER OF FINISH—

1	<i>Navy</i>	Time, 14...m.18 $\frac{1}{2}$ ...s.	4	<i>Washington</i>	Time, 14...m.21 $\frac{3}{5}$ ...s.
2	<i>Cornell</i>	Time, 14...m.18 $\frac{3}{5}$ ...s.	5	<i>Columbia</i>	Time, 14...m.25 $\frac{3}{5}$ ...s.
3	<i>Syracuse</i>	Time, 14...m.19 $\frac{3}{5}$ ...s.	6	<i>Pennsylvania</i>	Time, 14...m.53...s.

Water Conditions...*quite choppy*...Wind...*N.E.*

6.00 p.m., d.l.s.

## University Eight-Oared Shells

FOUR MILES

TROPHY—The Varsity Challenge Cup, presented in 1898, by Dr. Louis L. Seaman, Cornell, to be held by the winner for one year. Present holder, Columbia.

RECORD—Four-mile record, 18 m., 53 $\frac{1}{2}$  s., by Cornell, July 2, 1901. 13 m., 33 $\frac{3}{4}$  s., by U. S. Naval Academy, June 26, 1922, for three-mile course.

### COURSE POSITIONS

Course No. 1—Navy  
 Course No. 2—Cornell

Course No. 3—Pennsylvania  
 Course No. 4—Syracuse  
 Course No. 5—Washington

Course No. 6—California  
 Course No. 7—Columbia

### ORDER OF FINISH—

1	<i>California</i>	Time, 18...m.35 $\frac{4}{5}$ ...s.	5	<i>Navy</i>	Time, 19...m.10...s.
2	<i>Columbia</i>	Time, 18...m.38...s.	6	<i>Syracuse</i>	Time, 19...m.16 $\frac{3}{5}$ ...s.
3	<i>Washington</i>	Time, 18...m.46...s.	7	<i>Pennsylvania</i>	Time, 19...m.24 $\frac{3}{5}$ ...s.
4	<i>Cornell</i>	Time, 19...m.01...s.			

Water Conditions...*choppy rain*...Wind...*N.E.*

NOTES:—All course positions are numbered from the west shore of the River.—The Freshman and Junior Varsity Races start respectively one and two miles above the Bridge. The Varsity Race starts three miles above the Bridge, a mile above the Columbia Boat House. The finish line is the same for all races, one mile below the Bridge.  
 Data on how to identify the crews, order of finish, etc., will be found on Page Eleven.



**\$ 2.50**

PER DAY AND UP

For room, bath, shower and pantry

For two—\$3.50 per day and up

*A Club Residence  
in the  
Heart of the City*

THE NEW 21-STORY

# COMMODORE CLUB HOTEL

FOR MEN AND WOMEN

351 West 42nd Street  
One block west of Times Square

400 ROOMS . 400 BATHS . 400 SHOWERS

Bedroom-living room combined  
Restaurant and Grill

Luncheon 85c—Dinner \$1.00 and \$1.25

## HOW TO IDENTIFY THE CREWS

The competing crews may be identified by the color of the coxswain's jersey and of the flag on the bow of the shell, as follows:

Columbia—light blue	California—gold
Cornell—light red and white	Navy—dark blue
Pennsylvania—dark blue and red	Washington—white
Syracuse—orange	

## ORDER OF FINISH

### *Announced by Salvo of Bombs*

In each race, the *first* crew to pass under the Bridge will be announced by a salvo of bombs, the number of bombs fired corresponding to the number of the *lane* of the leading crew. The *first* crew to cross the finish line in each race will be announced in the same manner. The number of the lane occupied by each crew will be found below.

### *Indicated by Flags*

The order in which the crews finish will also be indicated by flags suspended from the Bridge, the regular college colors of the winning crew being the top flag. Flags will also be hoisted on the mast of the referee's boat, the colors of the winning crew being the uppermost flag—the rest hoisted in the order of finish. The flags will be as follows:

Columbia—light blue and white	Navy—blue and gold with white "N"
Cornell—red and white	California—dark blue and gold with white "C"
Pennsylvania—red and dark blue	Washington—purple and gold with white "W"
Syracuse—orange	

### *By Bulletin Board*

A Bulletin Board has been erected on the Judges' Boat, located at the Finish Line. The order in which the crews finish in all races will be indicated on this Board, the lane number of the crew being used in place of its college name. This use of the lane number was found necessary owing to the great distance of the Judges' Boat from the shore.

The lane number of the winning crew will be at the top, followed by the lane numbers of the other crews, in the order of finish.

The time made by each crew will appear opposite the number of its lane. For example, if the crew in lane No. 7 won, and its time was 20 minutes and 30 1-5 seconds, the top line on the board would read: "7-20-30 1-5."

## LANES OF THE CREWS

The lanes of the several crews (numbered from the west shore of the river) are as follows:

	<i>Freshman</i>	<i>Junior 'Varsity</i>	<i>'Varsity</i>
Lane No. 1.....	Syracuse	Pennsylvania	Navy
Lane No. 2.....	Navy	Navy	Cornell
Lane No. 3.....	Cornell	Washington	Pennsylvania
Lane No. 4.....	Pennsylvania	Columbia	Syracuse
Lane No. 5.....	Columbia	Syracuse	Washington
Lane No. 6.....	Washington	Cornell	California
Lane No. 7.....	California		Columbia



## HACKER DOLPHINS

*America's Finest Runabouts*

*Bigger — Faster — Safer — Roomier — Easier Riding — Better Built*

Coach Horween of Harvard has selected a Hacker Dolphin for his personal use this summer.

*Four Models—\$2975 to \$5850*

29-ft. Dolphin, Eleven Passengers - - - -	\$4,950
29-ft. Dolphin Sedan, Ten Passengers - - - -	\$5,850
26-ft. Dolphin Jr., Nine Passengers - - - -	\$4,275
24-ft. Baby Dolphin, Nine Passengers - - - -	\$2,975

*Prices quoted f.o.b. Mt. Clemens, Mich.*

*Don't miss an opportunity to ride in a Hacker Dolphin. Demonstrations arranged by appointment*

**Built by HACKER BOAT COMPANY, MT. CLEMENS, MICHIGAN**

on display at

**HOWARD W. LYON**

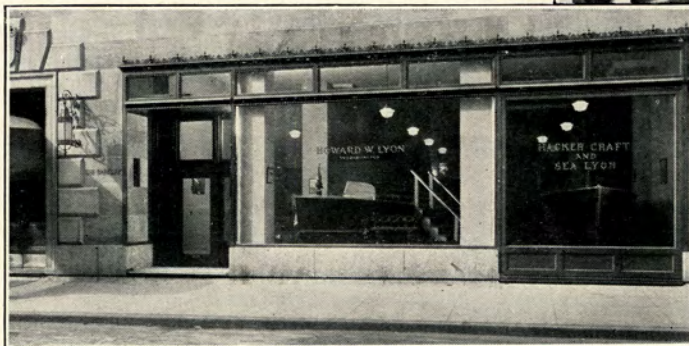
INCORPORATED

**HOTEL BARCLAY**

532 Lexington Avenue (at 49th Street)

**NEW YORK, N. Y.**

Phone: Vanderbilt 4445



The Hackercraft display room in New York at Hotel Barclay, 532 Lexington Avenue, is in the heart of the Grand Central and Park Avenue zone. In Boston the Hackercraft display is at Walter H. Moreton Corp., 1043 Commonwealth Ave.

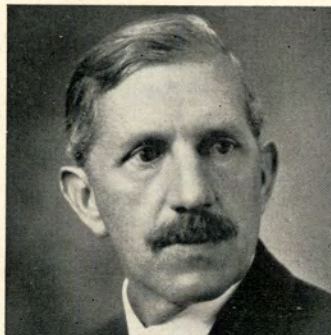
**COACHES OF THE INTERCOLLEGIATE ROWING  
ASSOCIATION CREWS**



© White

**GLENDON, OF COLUMBIA**

Richard J. Glendon, before being made senior coach of crew at Columbia, served in the same capacity at the Naval Academy, succeeding his father "Dick" Glendon, the originator of the famous "Glendon stroke." "Rich" went to the Naval Academy from Massachusetts, where he had captained teams in baseball, football, basketball, track and swimming in Boston and Chatham schools. In 1926, his first year at Columbia, "Rich" developed a Freshman Crew which went through its season undefeated, and which, as the Columbia 'Varsity of last year, won the Poughkeepsie Regatta.



© Troy

**WRAY, OF CORNELL**

James Wray came to Cornell in 1926, succeeding John Hoyle as senior coach of Crew. He has been actively engaged in rowing activities as a coach since 1905. At Harvard from 1905 to 1916, his crews defeated Yale six consecutive times, and a Wray-coached Harvard boat was the first American crew to lift the Henley Gold Challenge Cup. From 1916 to 1926, he had many successful seasons with such clubs as the Lone Star Boat Club, the Aurandal Boat Club, and the New York Athletic Club. In his second year at Cornell, Wray has placed a young and inexperienced Cornell Navy in a position of respect and prestige.



© Gowan (Seattle)

**CALLOW, OF PENNSYLVANIA**

Russell S. Callow, former University of Washington crew coach, graduated from the University of Washington in 1915. During that year he was captain of the 'Varsity Crew which came east and won the Poughkeepsie Regatta. In 1922 he was chosen as crew coach at his Alma Mater, and in 1923, 1924 and 1926 his crews won at Poughkeepsie. In 1925 his crew was second to Navy, and in 1927 second to Columbia. During these years he developed a number of stars, among them being Fred Spuhn, freshman coach at Penn. Bob Butler, of Navy, Dutton, of Washington, and Grant and Shaw, of Yale. He began his duties as head crew coach at Penn in September, 1927.



**TEN EYCK, OF SYRACUSE**

James A. Ten Eyck has become a permanent part of the rowing tradition at Syracuse. As coach of the sport there for a quarter of a century, except for one year during the World War, he has made the sport popular and successful. With the death of Coach Courtney of Cornell and the retirement of such men as Wright and Rice, Ten Eyck is probably the only active collegiate rowing coach of the old school. At 78 he retains all the vigor and keenness of mind that marked his own rowing days of fifty years ago.



# Nelson House



E. C. Coughlan, Prop.

*Poughkeepsie, N. Y.*

Phone: BRYant 8262

Established 1900



## NEWMAN'S

THEATRE TICKET SHOP

CHOICE SEATS FOR ALL THEATRES



1482 BROADWAY

NEW YORK CITY

DE LAVAL

## DE LAVAL-ON-HUDSON

While in Poughkeepsie attending the Intercollegiate Regatta,  
time and circumstances permitting,  
Visit the De Laval Plant

### THE DE LAVAL SEPARATOR COMPANY

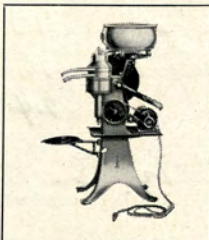
*World's largest manufacturer of*

*Cream Separators  
Milk Clarifiers  
Milking Machines  
Industrial Centrifugals*

DE LAVAL WELCOMES YOU

Q  
U  
A  
L  
I  
T  
Y

S  
E  
R  
V  
I  
C  
E

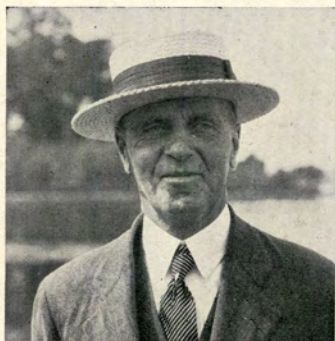
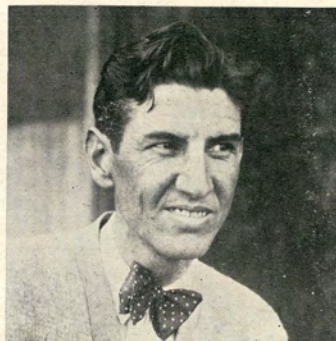


DE LAVAL

## COACHES OF THE VISITING CREWS

### EBRIGHT, OF CALIFORNIA

Upon the resignation of Coach Ben Wallis in 1921, Carroll Ebright, a former Washington coxswain, became coach of California's crews. For five years, from 1913 to 1917, he had rowed and then coached under Connibear at Washington. After a year in the air service during the war, Ebright returned to coaching. This spring his 'Varsity defeated Washington on the latter's course, being the first foreign crew to do this since 1903. This victory also marks the first time in history that California has beaten Washington twice in succession.



### GLENDON, OF THE NAVAL ACADEMY

Richard A. ("Dick") Glendon, the originator of the famous "Glendon stroke," came to the Naval Academy in the spring of 1904 and entered a brilliant career as director of rowing. In 1923 he retired, leaving his son to carry on the work. Again in the spring of 1928 "Dick" returned to the Academy as head coach. He is known as the man "who says little and when he does, it is only through a megaphone." His success is marked by the fact that he has lost only about one fourth of the total number of races entered, and in 1920 coached Navy's World Champion Crew.

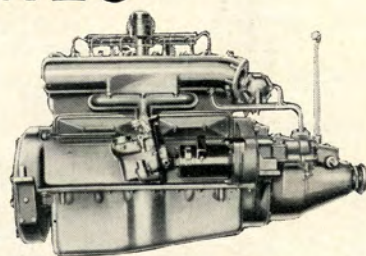
### ULBRICKSON, OF WASHINGTON

Al Ulbrickson was a Husky oarsman for four years under "Rusty" Callow when an undergraduate at the University of Washington and was Captain of the victorious Washington crew at Poughkeepsie in 1926. He served as Freshman coach at Washington last year and was appointed 'Varsity coach when Callow left to coach at Pennsylvania last fall.



**CHRYSLERS GREAT FIRST-YEAR RECORD**

**More than one-half of all  
Runabouts built during  
past *year* powered by  
**Chrysler**  
**MARINE ENGINES****



**H**ERE is the most sensational first-year record in all motor-boating history, established by what boat builders and owners acclaim as the most sensational marine engines ever placed on the market. Such success is but fitting, for these engines are the fruit of the most scientific marine engine design and most precise workmanship that modern manufacturing knows.

Large diameter 7-bearing crankshaft, automatic carburetor drain, special water pump construction, flywheel on forward and with oversize reverse gear in rear, simplicity of clutch and reverse gear adjustments are some of the many features

of these engines which have been available only in power plants of far higher price.

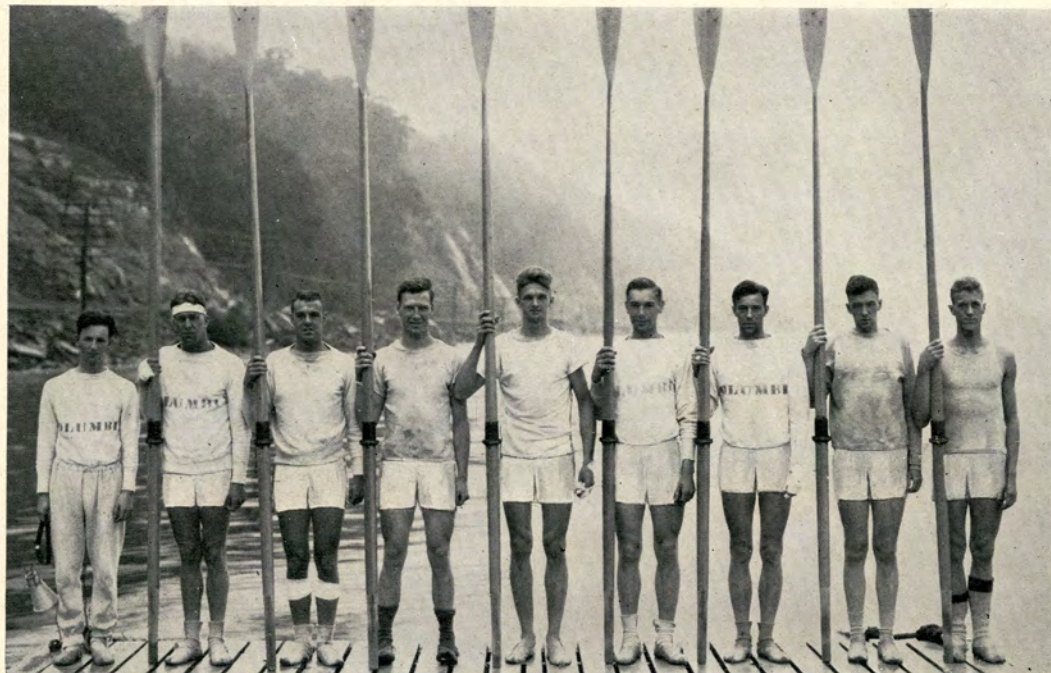
Boat builders have submitted them to the most exhaustive of rigorous tests, with the result that they have enthusiastically adopted these engines as standard equipment. Thousands of owners have echoed this enthusiasm after actual performance on inland and coast water has proved their ruggedness, reliability, smoothness and power.

Chrysler Marine Engines—106 h.p. Imperial and 82 h.p. Royal—are standard in such famous runabouts as Chris-Craft, Dodge Water Car and Dart. Cruiser enthusiasts will now find them in the Corsair Cruiser.

We shall be pleased to give you complete information regarding their adaptability for other hulls.

**MARINE ENGINE DIVISION, CHRYSLER CORPORATION**  
DETROIT, MICHIGAN

# COLUMBIA



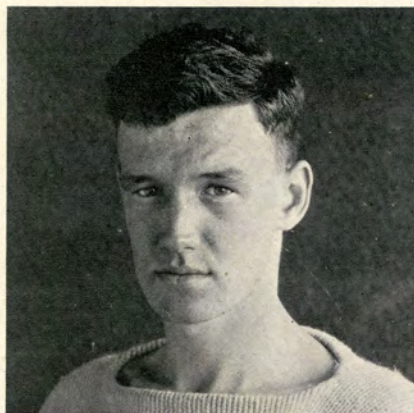
© White

1928 VARSITY

Position	Name	Age	Height	Weight
Bow	Samuel Walker . . .	18	6' 2½"	174
No. 2	Alaistair MacBain . .	20	6' 3"	174
No. 3	Arthur Douglas . . .	20	6' 2"	172
No. 4	William Blesse . . .	19	6' 3"	190
No. 5	William Lightbowne .	19	6' 4"	180
No. 6	Thomas Kerrigan . .	21	6' 2"	187
No. 7	Horace Davenport . .	21	6' 1"	180
Str.	Eric Lambart . . . . .	21	6' 2"	178

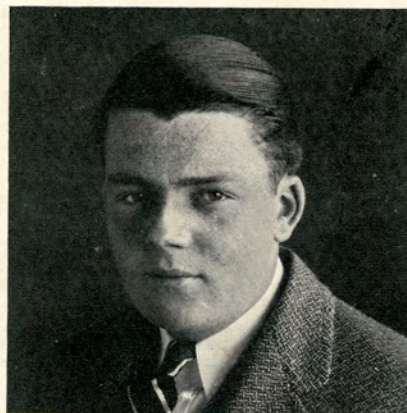
Position	Name	Age	Height	Weight
Cox.	Robert Berman . . .	18	5' 7"	120
Subs.	Charles Fremd . . . .	25	6' 2"	170
	Hugh Gardner . . . .	21	6'	160
	Harold Rousselot . .	21	5' 10"	159
	Jesse Moscovitz . . .	18	6'	168

Average . . . . . 19¾ 6' 2¼" 179¼



© White

ALAISTAIR MACBAIN, Captain



© White

GEORGE J. CONWAY, Manager



**SEALPACKERCHIEF**  
TRADE MARK REG. U.S. PAT. OFF.

for  
**Men and Women**

**BACH & NESBITT, Inc.**

*Mens Tailors*

34-36 West 46 St.

New York City

Have your clothes

Tailor made—

Costs no more and there is a  
 difference—

Call at your convenience and  
 let us convince you

**How Are You Spending  
 Your Vacation?**



Whatever your outdoor needs, you will be completely  
 and economically equipped at

**THE UNIQUE SHOPS**

3207 BROADWAY—Corner 125th St.

Tents	Cooking Outfits	White Ducks
Blankets	Camp Furniture	Khaki Clothes
Breeches	Bathing Suits	Camp Shoes

COMPLETE CATALOGUE UPON REQUEST

**JACOBS**

Theatre & Opera  
 Ticket Office

**1465 BROADWAY**

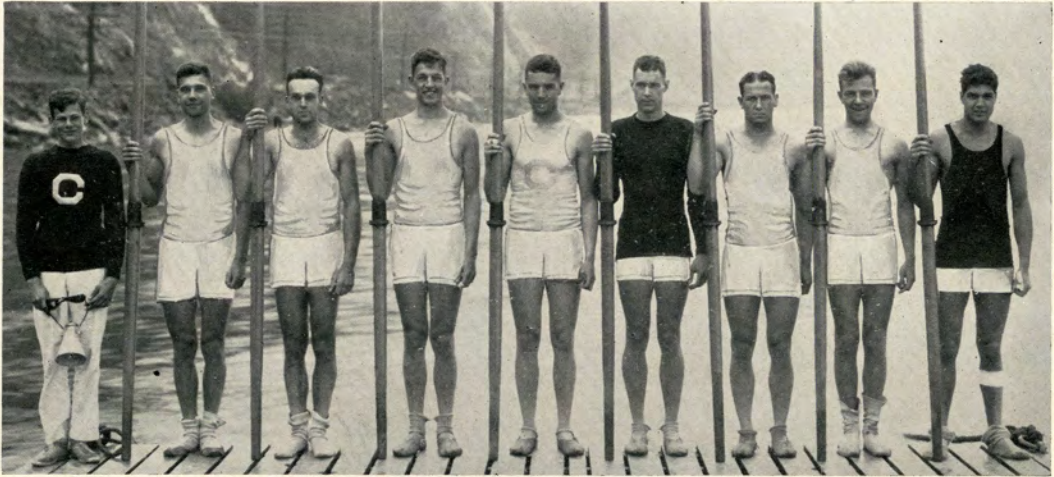
SOUTH WEST CORNER

42nd Street and Broadway

*Choice Seats for any  
 and all Sporting Events*

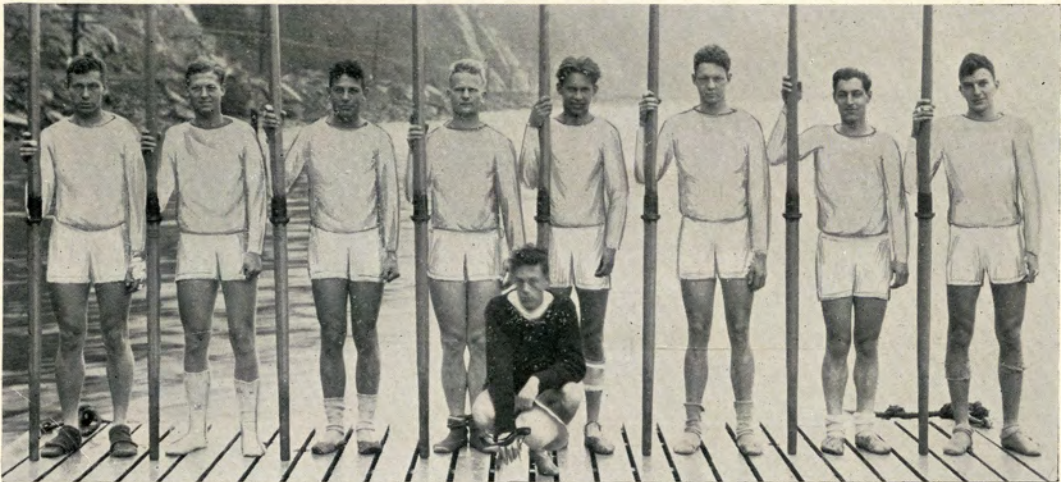
PHONE WISconsin 1300

# COLUMBIA



© White

JUNIOR 'VARSITY



© White

FRESHMAN CREW

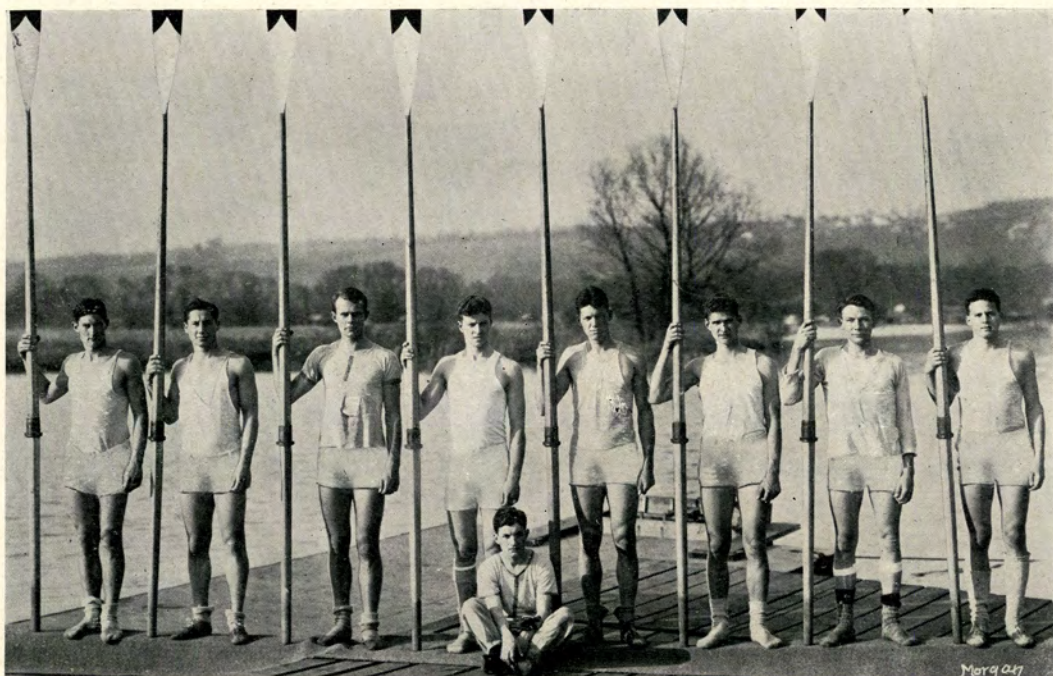
## JUNIOR 'VARSITY

Position	Name	Age	Height	Weight
Bow	Lionel Nobert	20	6' 1"	176
No. 2	Henry Dannemann	19	6' 1"	177
No. 3	Fred Reiger	21	6'	179
No. 4	John Murphy	21	6' 3"	182
No. 5	James Reynolds	21	6' 2"	185
No. 6	Richard Ince	22	6' 2½"	187
No. 7	Malcolm Bonyng	20	6'	171
Str.	William Sanford	20	6' 1"	171
Average		20½	6' 1¼"	178½
Cox.	Darius Phillips	18	5' 9"	116

## FRESHMAN

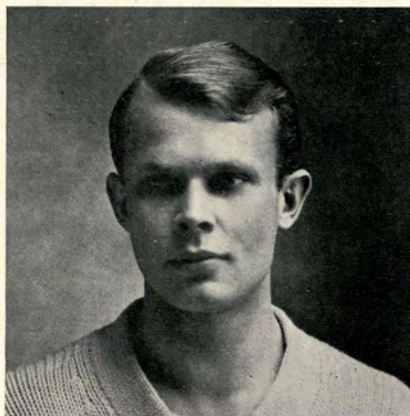
Position	Name	Age	Height	Weight
Bow	Henry Walter	17	6' 1"	170
No. 2	Stephen Fox	21	5' 10½"	167
No. 3	Edwin Lozier	21	6' 2"	172
No. 4	Victor Nordstrom	18	6' 1"	163
No. 5	David Kuusinato	21	6'	178
No. 6	Clifford Spiller	19	6'	177
No. 7	Carl Ganzle	19	6'	179
Str.	Alfred Triska	20	6' 1½"	184
Average		19½	6' ½"	173¾
Cox.	Walter Michels	17	5' 8"	116
Subs.	Robert Werner	17	6'	163
	Floyd Sanford	21	6'	173
	Peter Blasi	18	6' 1½"	182
	Francis Kiel	18	6' 2"	170
	Charles Metzner	17	5' 8"	114

# CORNELL



1928 'VARSITY

Position	Name	Age	Height	Weight
Bow	Mann, W. L.....	19	6'	173
No. 2	Wainright, T.....	22	6' 1/2"	171
No. 3	Aigeltinger, H.....	19	6' 1 1/2"	170
No. 4	Hopper, T. W.....	20	6' 4"	185
No. 5	Pierie, T. W.....	20	6' 2"	177
No. 6	Boschen, H. C.....	21	6' 4"	187
No. 7	Katz, B.....	22	6' 1/2"	181
Str.	Abbott, S. W.....	20	6' 1/2"	173
Average .....		20 1/2	6' 1 1/2"	177
Cox.	Walker, C. L.....	22	5' 4"	110

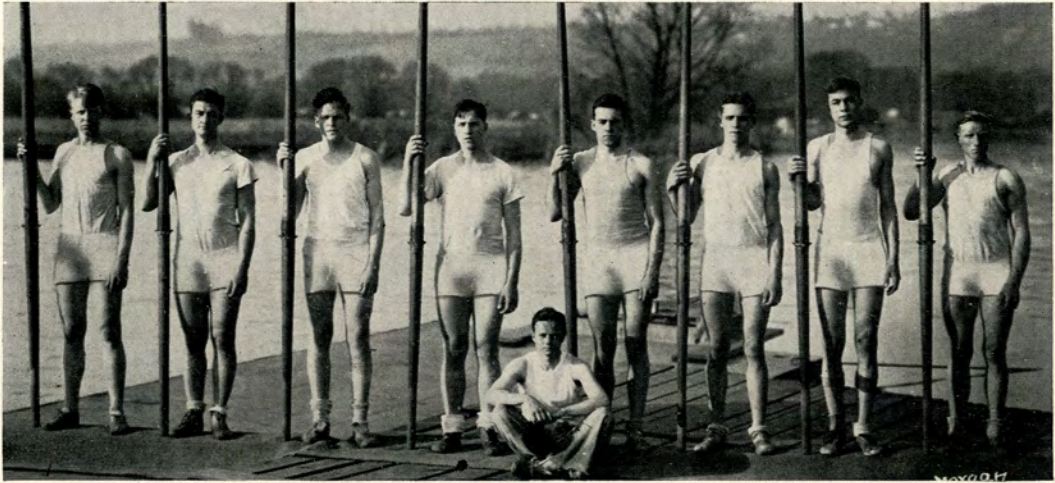


HENRY C. BOSCHEN, *Captain*

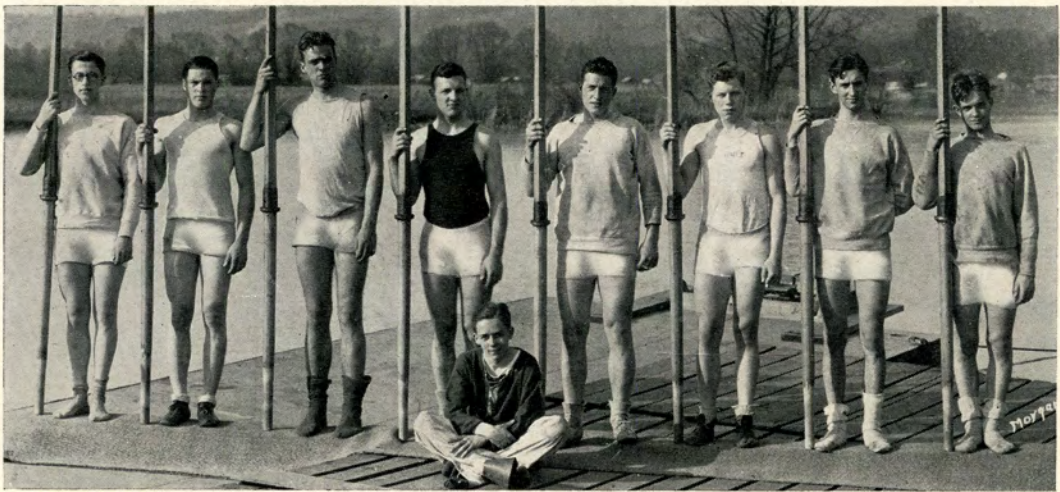


JAMES K. HALL, *Manager*

# CORNELL



JUNIOR 'VARSITY



FRESHMAN CREW

## JUNIOR 'VARSITY

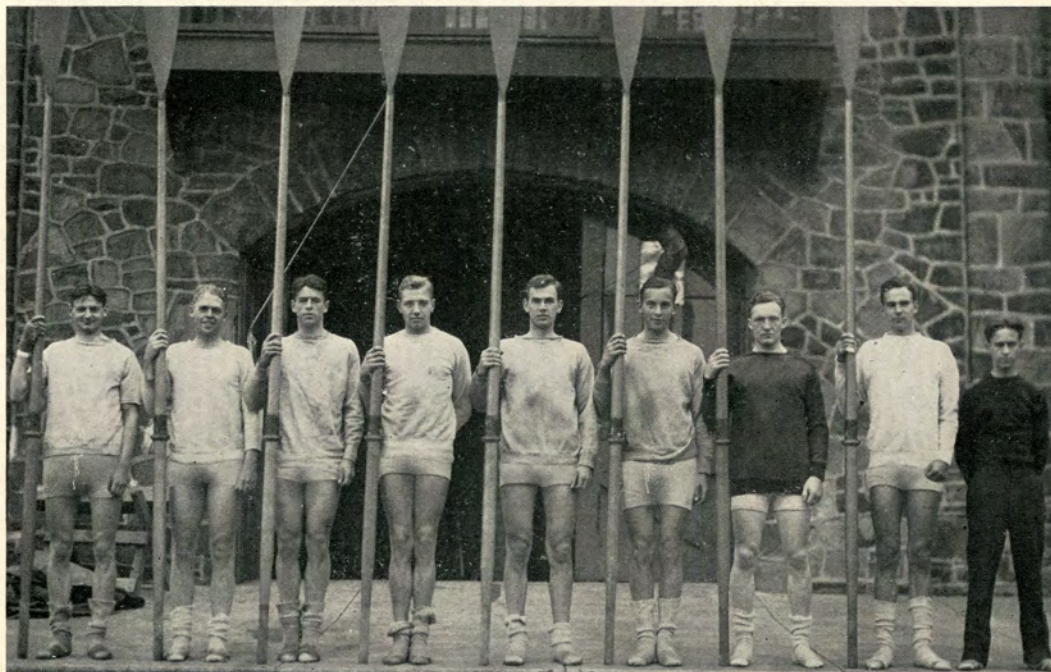
Position	Name	Age	Height	Weight
Bow	Stillman, W. W.	22	5' 10"	160
No. 2	Schumacher, F. W.	19	6' 2"	171
No. 3	Godfrey, G. L.	21	6' 2"	170
No. 4	Moody, J. E.	24	6' 1"	179
No. 5	Scott, N. E.	19	6' 1"	180
No. 6	Nicholson, S. B.	21	6'	174
No. 7	Todd, C. H.	21	6'	180
Str.	Shoemaker, H. B.	20	6' 1"	170
Average		21	6' ½"	173
Cox.	Joyce, E. G.	20	5' 4"	115
Subs.	Behrman, G. W.	21	6' 3"	165
	Bate, H. H.	20	6' 2"	180
	Armstrong, J. N.	19	6' ½"	178

## FRESHMAN

Position	Name	Age	Height	Weight
Bow	Shallicross, J. R.	18	6'	175
No. 2	Smith, E. M.	19	6' 1"	176
No. 3	Fischer, H. E.	18	6' 1"	186
No. 4	Heidelberger, R. J.	20	6' 2½"	192
No. 5	Hackstaff, B. W.	18	6'	177
No. 6	Clark, B. B.	20	6' 5"	196
No. 7	Lueder, F. A.	18	6' ½"	175
Str.	Durham, A. G.	18	6'	170
Average		18½	6' 1"	181
Cox.	Burke, J. B.	—	5' 5"	109
Subs.	Petroff, B.	18	5' 11"	154
	Ireland, W. F. A.	20	5' 10½"	159
	Steutzer, H., Jr.	17	6' 4"	168
	Vanneman, W. M.	19	6' 1"	159



## PENNSYLVANIA



1928 'VARSITY

Position	Name	Age	Height	Weight
Bow	Teaf, E. A.....	22	6' 1½"	170
No. 2	Coates, D. W.....	21	6' 1"	176
No. 3	Pine, W. A.....	19	6'	172
No. 4	Armstrong, W. H...	20	6' 2"	175
No. 5	Sebastian, J.....	21	6' 3½"	187
No. 6	Krampf, C. E.....	19	6' 3"	180
No. 7	Gentsch, F. C. (Capt.)	22	6' 1"	178
Str.	Taeffner, W. E.....	20	6' 2"	168
Average .....		20½	6' 1¾"	175¾
Cox:	Oerter, E.....	21	5' 8½"	112

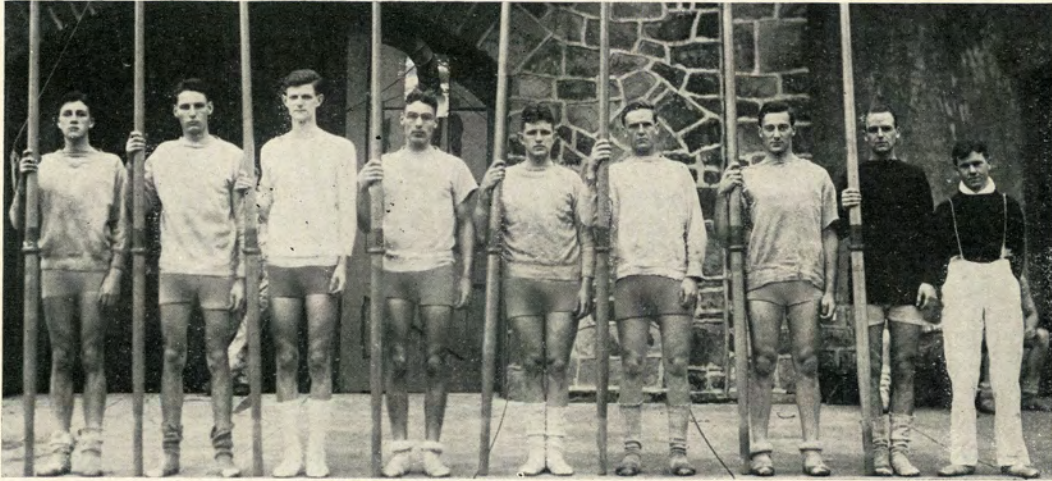


FRED C. GENTSCH, *Captain*

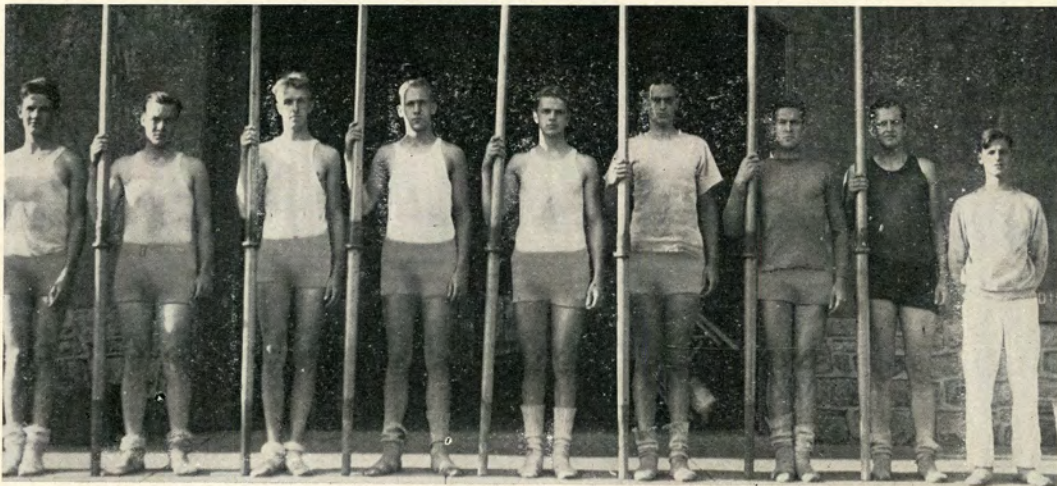


JOHN MITCHELL, *Manager*

# PENNSYLVANIA



JUNIOR 'VARSITY



FRESHMAN CREW

## JUNIOR 'VARSITY

Position	Name	Age	Height	Weight
Bow	Spurdle, J. W.	21	6' 2"	148
No. 2	Sears, R. F.	18	6' 3½"	175
No. 3	Brate, R. H.	20	6' 1"	170
No. 4	Lange, H. H.	20	6' 1½"	180
No. 5	Bradley, J. C., Jr.	20	5' 11"	175
No. 6	Cheney, J. K.	22	6' 11"	176
No. 7	Edwards, K. F.	20	5' 11"	178
Str.	Sweetser, S.	21	6'	152

Average ..... 20¼    6' ¾"    169¼

Cox.	Hamilton	21	5' 3"	115
Subs.	Hofmann, P. B.	18	6' 2"	165
	Roth, W. F.	19	6' 6"	168
	Kissel, R. E.	20	6' 3"	165
	Gould, H. C.	21	6' 3"	180

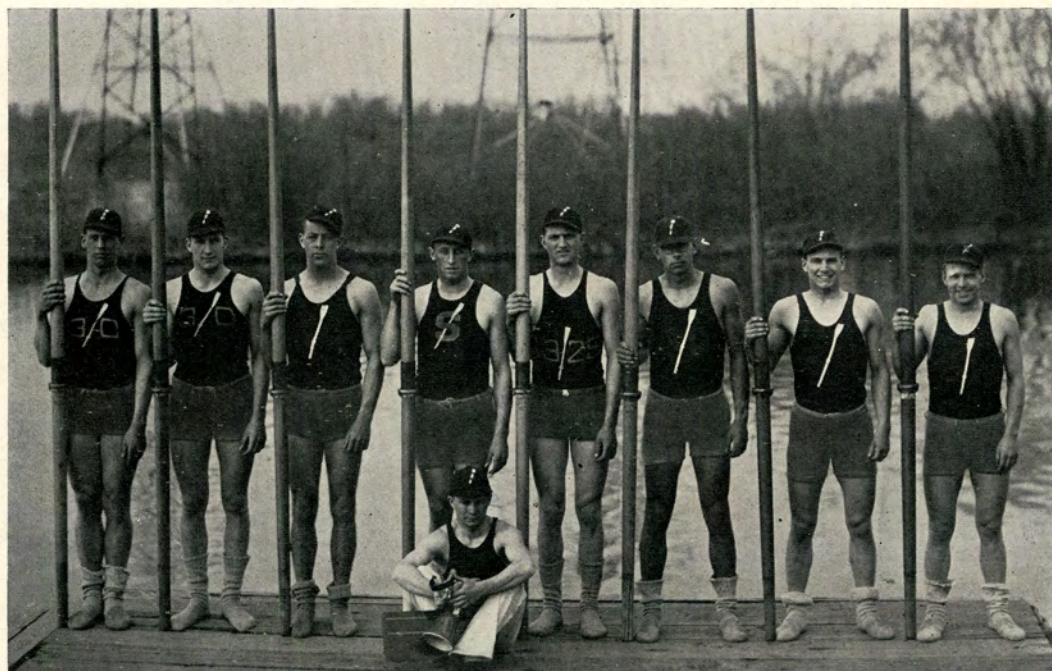
## FRESHMAN

Position	Name	Age	Height	Weight
Bow	White, J. B.	21	6' 1"	157
No. 2	Wall, J. J.	20	5' 11½"	176
No. 3	DeVeau, Harold	18	6' 2"	164
No. 4	Olsen, J. A.	22	6' 1½"	178
No. 5	Lambert, T.	20	6' 1"	188
No. 6	Mallory, Cornelius	18	6' 4½"	193
No. 7	Jordan, Edw. J.	21	6' 1"	178
Str.	Thrasher, C. E.	21	6' 1½"	180

Average ..... 20    6' 1½"    177¾

Cox.	Anderson, Wesley	19	5' 6"	111
Subs.	Davis, H. R.	17	6'	171
	Sheronas, V. F.	19	6' 1½"	171

## SYRACUSE



1928 'VARSITY

Position	Name	Age	Height	Weight
Bow	Wm. Wetherell....	21	5' 7"	145
No. 2	Daison McCallum..	20	5' 10½"	165
No. 3	Leo Toch.....	20	6' 2"	180
No. 4	Wm. Singer.....	20	6' 4"	184
No. 5	Joe Frawley (Capt.)	23	6'	185
No. 6	Stanley Jeffery....	21	6'	175
No. 7	Harold Deming....	19	6' 2"	179
Str.	Elie Loizeaux.....	19	6' 2"	186
Average .....		20½	6' ½"	175
Cox.	Howard Tolley ....	23	5' 4"	115



© Barnard  
JOSEPH FRAWLEY, *Captain*



© Barnard  
EDWARD BELTZ, *Commodore*

# SYRACUSE



JUNIOR 'VARSITY

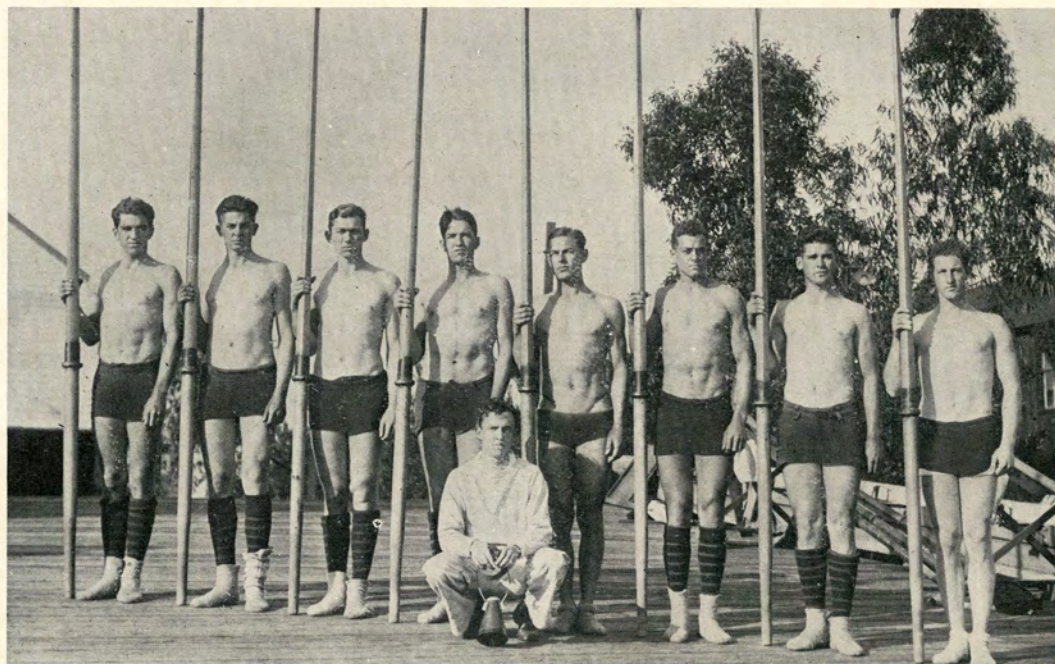


FRESHMAN CREW

JUNIOR 'VARSITY				
Position	Name	Age	Height	Weight
Eow	Donald Thomas	21	6' 2"	170
No. 2	Harry Tollerton	19	6'	170
No. 3	Robert Cockerell	21	6'	175
No. 4	William Compton	21	6' 1"	176
No. 5	James Monro	20	6'	179
No. 6	Morris Hickey	20	6'	165
No. 7	John Laidlaw	19	6' 1"	182
Str.	Charles O'Connor	21	6' 2"	183
<hr/>				
Average		20 $\frac{1}{4}$	6' 3 $\frac{1}{2}$ "	175
Cox.	Harold Bauer	20	5' 4"	116
Subs.	Carl Walter	20	6' 1 $\frac{1}{2}$ "	175
	Albert K. Murray	21	6'	155
	Harold Gunert	19	6' 3"	179

FRESHMAN				
Position	Name	Age	Height	Weight
Bow	Wayne Smart	19	6'	158
No. 2	John Herrick	19	5' 10"	150
No. 3	Francis Danehy	18	6'	152
No. 4	Farrel Cosgriff	20	6' 1 $\frac{1}{2}$ "	184
No. 5	Percy Land	19	6' 3 $\frac{1}{2}$ "	185
No. 6	Gordon Holder	20	6' 3 $\frac{1}{2}$ "	161
No. 7	Arthur Fegel	17	6' 2"	186
Str.	Frederick Chester	18	6' 3"	188
<hr/>				
Average		18 $\frac{3}{4}$	6' 1 $\frac{1}{2}$ "	170 $\frac{1}{2}$
Cox.	Bennie Ternasky	19	5' 3 $\frac{1}{2}$ "	110
Subs.	Clare Cole	19	6' 2"	190
	Desmond Hallaran	20	6' 1"	181
	Harlow Hopkins	18	6' 2"	170
	Leslie Justice	21	5' 10"	180
	Harold Langford	20	6' 4"	186
	Carl Murray	20	6' 1 $\frac{1}{2}$ "	163
	Chester Stearns	20	6' 2"	158
	Roscoe Tarbell	19	6' 2 $\frac{1}{2}$ "	184

# CALIFORNIA



1928 'VARSITY

Position	Name	Age	Height	Weight
Bow	Stalder, Marvin...	22	6' 1"	170
No. 2	Brinck, Jack.....	20	6' 2"	178
No. 3	Frederick, Francis..	21	6' 1 $\frac{3}{4}$ "	180
No. 4	Workman, James... 19	19	6' 3"	178
No. 5	Rydlander, Alvin... 22	22	6' 2"	184
No. 6	Thompson, William. 19	19	6' 3"	184
No. 7	Caldwell, Hubert... 20	20	6' 2"	180
Str.	Donlon, Peter..... 21	21	6' $\frac{3}{4}$ "	171
Average .....		20 $\frac{1}{2}$	6' 2"	178
Cox.	Blessing, Donald... 22	22	5' 7"	118
Subs.	Dressler, Carroll... 21	21	6' 7"	180
	Dally, William..... 19	19	6' 2"	182



RYDLANDER



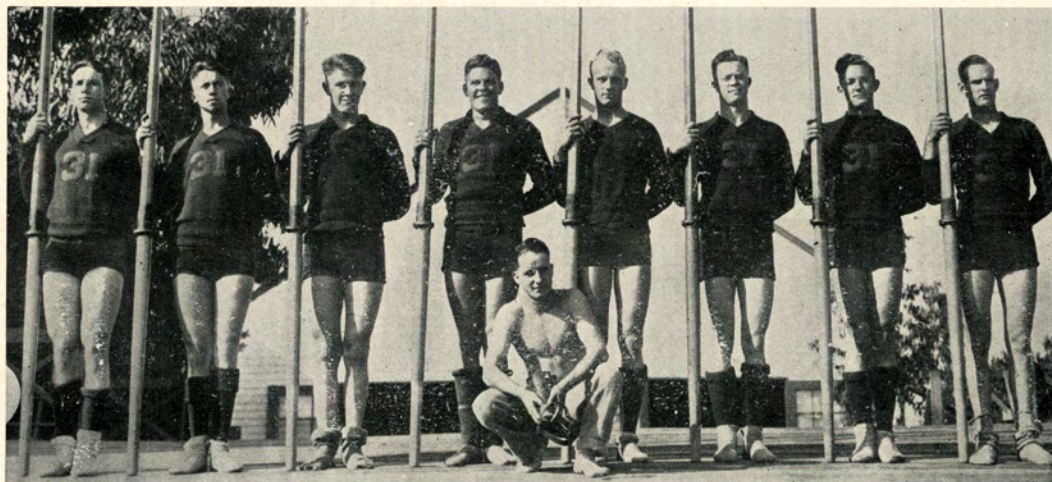
DRESSLER



© Cohen  
BLAKE WHARTON  
Manager

*Honorary Captains*

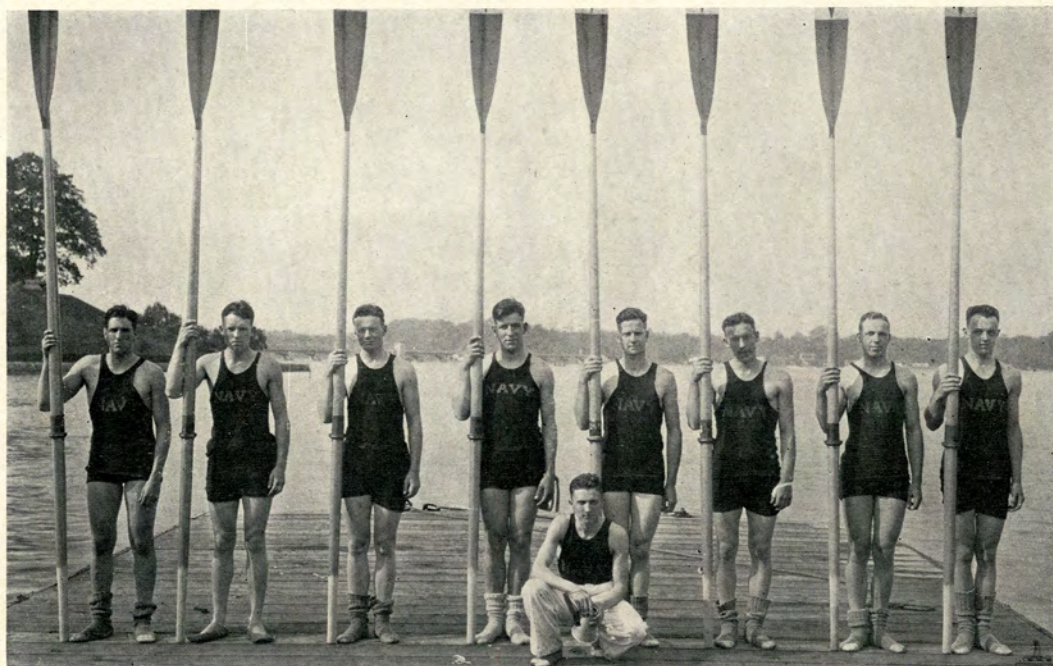
## CALIFORNIA



FRESHMAN CREW

<i>Position</i>	<i>Name</i>	<i>Age</i>	<i>Height</i>	<i>Weight</i>	
Bow	Silver, Walter.....	18	6' 1"	169	
No. 2	Stevens, Horace....	19	6'	168	
No. 3	Pope, Lee.....	18	6' 1"	170	
No. 4	Stowell, Deane....	19	6'	176	
No. 5	Granger, Harvey ...	18	6' 1"	170	
No. 6	Condit, Phil.....	18	6' 2½"	179	
No. 7	Wells, Howard.....	19	6' ½"	161	
Str.	Owen, Victor.....	18	6' 1"	174	
Average .....				18¼ 6' ¾"	170¾
Cox.	Montgomery, Julian	19	5' 5"	118	
Subs.	Woodward, William.	19	6'	182	
	Knight, John .....	20	6' 2"	172	

# U. S. NAVAL ACADEMY



© Pickering

## 1928 'VARSITY

Position	Name	Age	Height	Weight
Bow	Austin, S. Y. ....	20	6'	170
No. 2	McClure, W. H. ....	22	6' 1"	171
No. 3	Giese, C. E. ....	22	6'	180
No. 4	Sharp, G. A. ....	22	6'	170
No. 5	Jung, K. E. ....	21	6' 2"	190
No. 6	Strong, S. C. ....	22	6' ½"	176
No. 7	Pieczentkowski, H. A. 21	21	6' 1"	173
Str.	Eddy, I. C. ....	21	6' ½"	179
Average .....		21 ¼	6' ½"	178
Cox.	Burgess, J. G. ....	21	5' 4 ½"	115



© Pickering  
M. P. BAGDANOVICH, Captain



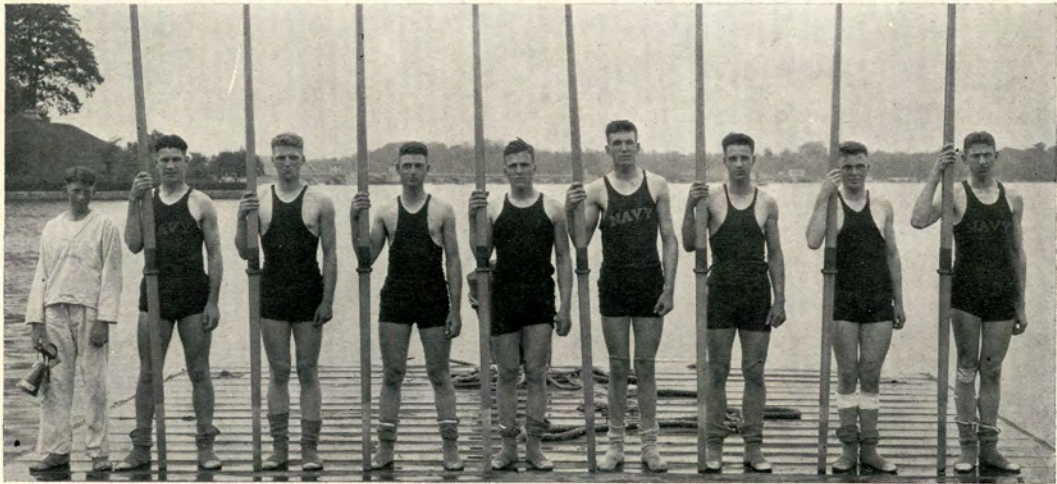
© Pickering  
R. N. NORGAARD, Manager

# U. S. NAVAL ACADEMY



© Pickering

JUNIOR 'VARSITY



© Pickering

PLEBE CREW

## JUNIOR 'VARSITY

Position	Name	Age	Height	Weight
Row	Bagdanovich, M. P.	24	6'	181
No. 2	Pirie, J. C.	20	6' 3"	185
No. 3	Butts, W. S.	21	6'	182
No. 4	Russell, P. W.	20	6' 1"	189
No. 5	Anderson, S. C.	21	6' 3"	186
No. 6	Woerner, P. L.	22	6' 1"	184
No. 7	Westhofen, C. L.	20	5' 11½"	175
Str.	Sears, H. E.	21	5' 11"	158
Average		21	6' ¾"	180
Cox.	Miller, G. W.	21	5' 3"	112
Subs.	Hardin, J. T.	22	6' 1"	178
	Nelson, W. T.	19	6' 1½"	175
	Lincoln, S. A., Jr.	21	6' 1"	175
	Quilter, J. F.	20	6' 2"	175
	White, J. T. (Cox.)	23	5' 3"	115

## PLEBE CREW

Position	Name	Age	Height	Weight
Row	Kollock, F. N.	18	6'	170
No. 2	Keihlbauch, J. V.	20	6'	165
No. 3	Schoen, I.	20	6'	171
No. 4	Winters, F. C.	20	6' 2"	173
No. 5	Gray, A. D.	18	6'	177
No. 6	Hunter, R. P.	19	6'	172
No. 7	Steffanides	20	6' 1"	173
Str.	Crinkley, F. D.	20	6'	189
Aver.		19½	6' ¼"	173¼
Cox.	Irons, A. H.	17	5' 7"	125
Subs.	Greathouse	17	6' 6"	180
	Steinke, F. S.	19	6'	175



# WASHINGTON



1928 'VARSITY

Position	Name	Age	Height	Weight
Bow	Warren Davis	21	6' 1½"	175
No. 2	James Becksted	21	6' 2"	176
No. 3	Bob Schoettler	24	5' 11½"	182
No. 4	Joel Olmstead	24	6' 2"	180
No. 5	Ronald Wailes	32	6' 3"	192
No. 6	Jack Valentine	21	6' 3½"	193
No. 7	Marius Glerup	23	6' 2"	170
Str.	Ellis MacDonald	21	6'	181
Average		23¼	6' 1¾"	181
Cox.	Paul Orr	22	5' 6"	130
Subs.	George Oisad	19	6' 1½"	182

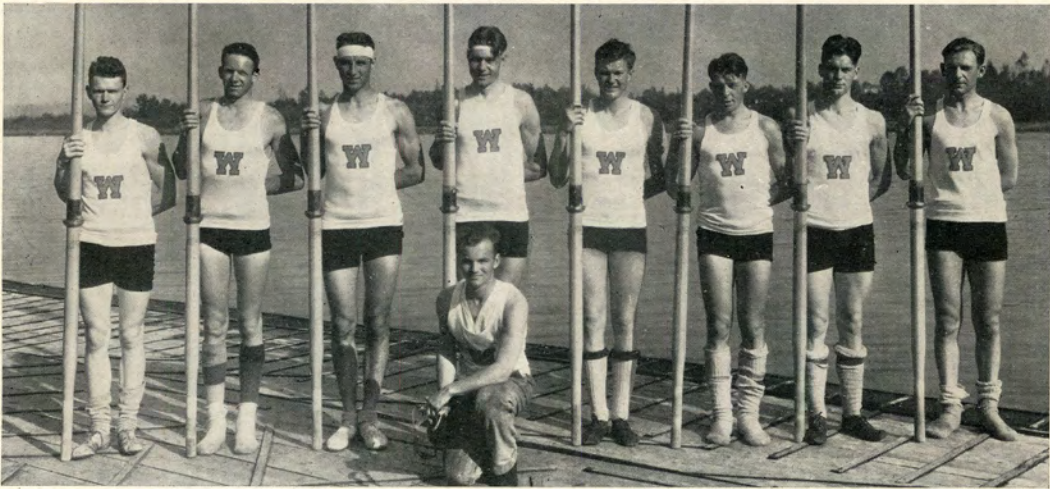


MARIUS GLERUP, *Captain*



JOE ADAMS, *Manager*

# WASHINGTON



JUNIOR 'VARSITY



FRESHMAN CREW

## JUNIOR 'VARSITY

Position	Name	Age	Height	Weight
Bow	Wallace Litchfield..	21	6' 2½"	179
No. 2	Frank Shaw .....	21	6' 1½"	175
No. 3	Bill Wohlmacher....	21	6' 3"	185
No. 4	Stan Valentine.....	19	6' 2"	183
No. 5	Ed Fricke.....	26	6' 4"	185
No. 6	Jim Runte.....	21	6' 3"	190
No. 7	Henry Loners.....	22	6' 3"	170
Str.	Ed Anderson.....	20	6' 1"	175

Average .....	21¼	6' 2½"	180¼
Cox. Haines Gaffner....	22	5' 5"	120

## FRESHMAN CREW

Position	Name	Age	Height	Weight
Bow	Lloyd Shorett.....	18	6' 3"	163
No. 2	Gil Bowen.....	20	6' 4½"	177
No. 3	Lee Drake.....	21	6' 1"	171
No. 4	Gerald Alcorn.....	20	5' 11"	182
No. 5	Henry Schmidt.....	17	6' 2½"	183
No. 6	Ed Wilson.....	18	6' 2¾"	181
No. 7	Bruce Murphy.....	18	6' 3"	170
Str.	John Ginger.....	18	6' 2"	167

Average .....	18¾	6' 2¼"	174¼
Cox. Mark Matthews....	19	5' 10½"	120

*We Invite You*  
To Bank With Us

Liberal Rates Paid On  
Checking Accounts

4½% PER ANNUM

paid on Special Interest Department deposits, compounded every January and July 1st

POUGHKEEPSIE  
TRUST COMPANY

1901 — "The Bank of Service" — 1928

*A plate of*

SCHRAUTH'S  
ICE CREAM

*Is a Serving of  
Health*



POUGHKEEPSIE, N. Y.

*Beekman Arms*

*Oldest Hotel in America*

EUROPEAN PLAN

*Rhinebeck, New York*



---

Worthy of Your Patronage

---

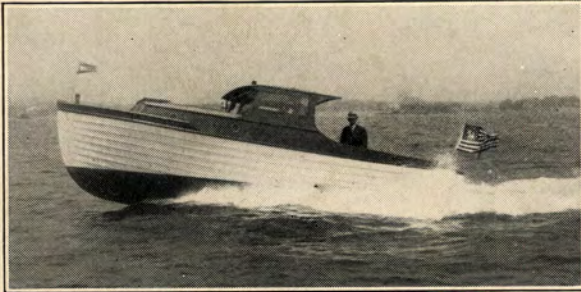
Special Noonday Lunch \$1.00  
Dinner \$1.50

*Standard service  
for the  
Valley*



Central Hudson  
Gas & Electric  
Corporation

# PLAYMATES



Everyone wants a playmate, and at our prices these fast comfortable boats are within the reach of most all boat prospects. Our 26' model supplies the runabout qualities of speed and easy handling but far surpasses the ordinary runabout by being an all weather, sea roving little cruiser that will bring the party home safely.

26' model: Toilet, galley, two bunks, complete equipment, 20 miles, \$3,350.00

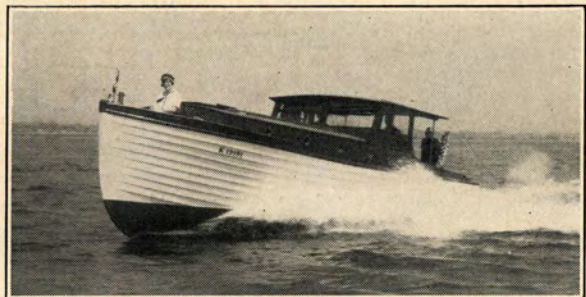
# POPULAR



28' model: Toilet, complete galley, 4 berths, 18 miles, \$3,975.00; 24 miles, \$5,750.00

# WHEELER

The larger boats are all completely equipped cruisers. Designed and developed to meet the demand for the sporting cruising enthusiast, the deep sea fisherman, those who wish to cruise comfortably and fast. We have a size, speed and cabin accommodations for your most exacting demands.



31' model: Toilet, very large galley and roomy cabin, 22 miles, \$5,850.00

35' model: Very roomy, comfortable boat with large cabin and cockpit, 24 miles, \$6,650.00

*You are invited to visit our plant. By all means get literature*

**WHEELER SHIPYARD**

Coney Island Creek and Harway Ave., Brooklyn, N. Y.